

REPUBLIC OF THE PHILIPPINES
Philippine Commission on Women
Department of the Interior and Local Government
Department of Budget and Management
National Economic and Development Authority

JOINT MEMORANDUM CIRCULAR

NO. 2013 – 01

TO : All Provincial Governors, City/Municipal Mayors and Punong Barangays, Members of the Local Sanggunian, DILG Regional Directors (Local Government and Interior Sectors), ARMM Governor, DILG-ARMM Regional Secretary and All Others Concerned

SUBJECT : GUIDELINES ON THE LOCALIZATION OF THE MAGNA CARTA OF WOMEN

1.0 PURPOSE

- 1.1 To prescribe policies and procedures in mainstreaming gender perspectives in local planning, programming and budgeting; local legislation; project development, implementation, monitoring and evaluation pursuant to RA 9710 or the Magna Carta of Women (MCW);
- 1.2 To align efforts of local government units (LGUs) and the National Government on Gender and Development (GAD) and its commitments to international declarations;
- 1.3 To strengthen LGU-LGU and LGU-National Government Agency (NGA) relations on GAD planning, programming, budgeting, project development, implementation, monitoring and evaluation; and
- 1.4 To specify the oversight roles of the Department of the Interior and Local Government (DILG), the Philippine Commission on Women (PCW), the Department of Budget and Management (DBM), and the National Economic and Development Authority (NEDA) in the localization of the MCW.

2.0 GUIDING PRINCIPLES

- 2.1 Recognize the fundamental equality of women and men before the law as provided for in the 1987 Philippine Constitution;
- 2.2 Pursue women's empowerment and gender equality pursuant to RA 7160 or the Local Government Code of 1991 (LGC), the General Appropriations Act (GAA), the MCW and other international commitments particularly the Convention on the Elimination of All Forms of Discrimination Against Women (CEDAW); the Beijing Platform for Action (BPA); and the Millennium Development Goals (MDGs); and adopt gender mainstreaming as a strategy to promote and fulfill women's human rights and eliminate gender discrimination in government systems, structures, policies, programs, processes and procedures as mandated by the MCW;
- 2.3 Promote the general welfare, provide basic services and facilities and implement programs, projects and activities (PPAs) as provided for by Sections 16 and 17 of the LGC, the Philippine Plan for Gender-Responsive Development (PPGD) [1995 – 2025], the Philippine Development Plan (PDP) and other succeeding term plans; and
- 2.4 Institute an enabling environment at the local level that will ensure gender-responsive governance.

3.0 GENERAL GUIDELINES

- 3.1 Local officials and employees shall be responsible in promoting and ensuring that gender and development is mainstreamed in local policy-making, planning, programming, budgeting, implementation, monitoring and evaluation. In this regard, LGUs shall ensure that their GAD Focal Point System (GFPS) or similar GAD mechanisms are in place, fully-functional and the members have the capacity and influence to promote gender mainstreaming pursuant to Section 37 of the MCW Implementing Rules and Regulations (MCW IRR).
- 3.2 LGUs shall deepen their knowledge and build their competencies on GAD-related laws and international commitments, gender mainstreaming, gender analysis, gender-responsive planning and budgeting, and GAD-related tools among others;
- 3.3 LGUs shall ensure active participation of local committees/councils in partnership with national/regional government agencies, academe, private sector and civil society organizations (CSOs) operating at the local level for effective gender mainstreaming;
- 3.4 LGUs shall establish and/or strengthen their monitoring and evaluation systems to assess the effectiveness and efficiency of their gender mainstreaming efforts;
- 3.5 In compliance with the Full Disclosure Policy, LGUs shall post in conspicuous places, websites or print media their progress in gender mainstreaming including the utilization of the GAD budget. In the absence of websites, LGUs may upload in the DILG Regional or Central Office websites; and
- 3.6 Oversight agencies such as the DILG, PCW, DBM, and NEDA shall provide technical assistance to LGUs on matters related to gender mainstreaming and the implementation of these guidelines.

4.0 INSTITUTIONAL MECHANISMS TO IMPLEMENT THE MAGNA CARTA OF WOMEN

- 4.1 As a strategy to implement the MCW, LGUs shall pursue gender mainstreaming in their respective localities. As such, they shall ensure that the following mechanisms and processes are in place:

A. Creation and/or Strengthening of the LGU GAD Focal Point System (GFPS)

- 1) All LGUs shall establish and/or strengthen their GFPS or similar GAD mechanisms to accelerate gender mainstreaming within their localities. The Local Chief Executive/s (LCEs) shall sign appropriate issuances to institutionalize the establishment, reconstitution and/or strengthening of the GFPS in their respective LGUs.
- 2) The LGU GFPS shall adhere to the structure and composition provided for in the MCW-IRR as follows:

To carry out its functions, the LGU GFPS shall have an Executive Committee (Execom), a Technical Working Group and/or a Secretariat.

The GFPS Executive Committee shall be composed of the LCE as the Chair and shall have the LGU Department Heads, Chairs of the Sanggunian Committees on Women, Children and Family, and Appropriations; and representatives from the PNP's Women's Desk, Indigenous Peoples (IPs), Persons with Disabilities (PWDs), private sector, academe and recognized and/or accredited non-government organizations (NGOs) as well as women associations as members. In the case of cities and municipalities, the President of the Liga ng mga Barangay and the Sanggunian Kabataan (SK) Federation President may be invited as members of the GFPS. The LCE may also designate an alternate Chair and Vice-Chair for the GFPS.

The GFPS Technical Working Group (TWG) shall be composed of, **but not limited to**, key staff from the various LGU offices/departments or committees represented in the GFPS Executive Committee, including a representative from the LCE's office, members from the private sector, academe and civil society organizations as appropriate. The GFPS TWG Chair shall be elected from among the GFPS TWG members. The designation of the GFPS TWG Chair shall be made official through the issuance of a Memorandum duly signed by the LCE and endorsed by his or her

immediate supervisor or concerned LGU Department Head. The GFPS TWG Chair may designate a secretariat to assist the TWG in its functions.

Where feasible, the LGU may also establish a GAD Office or unit under the Office of the LCE that will support and coordinate all GAD-related PPAs and concerns of the LGU GFPS. The LCE may also appoint or designate the LGU personnel to manage the GAD office and/or unit.

The Barangay GFPS shall be chaired by the Punong Barangay, co-chaired by the Chair of the Sangguniang Barangay Committee on Women, Children and Family, with the following as members:

- i. Sangguniang Barangay Committee on Appropriations
- ii. SK Chairperson
- iii. Barangay Health Worker
- iv. Barangay Treasurer
- v. Violence Against Women (VAW) Desk Officer
- vi. Barangay Nutrition Scholar
- vii. Tanod Executive Officer
- viii. Day Care Worker
- ix. Lupong Tagapamayapa member
- x. Women's organizations existing at the barangay level
- xi. Barangay Human Rights Action Officer, where existent
- xii. Members of the private sector and academe, as appropriate

The Barangay Secretary shall provide secretariat support to the Barangay GFPS.

(Refer to Annex A: Organizational Structure of the LGU GAD Focal Point System).

- 3) All LGUs shall ensure that all members of the GFPS including elected local officials and department heads undergo capacity building programs on GAD which shall include but not be limited to: gender sensitivity training (GST), gender-responsive planning and budgeting, gender analysis, gender audit and GAD tools such as the Gender Mainstreaming Evaluation Framework (GMEF), Gender Responsive LGU Ka Ba (GeRL Ka Ba) Self-Assessment Tool, Harmonized Gender and Development Guidelines (HGDG) and other succeeding GAD tools.

4) General Functions of the LGU GFPS

Pursuant to the MCW-IRR, the GFPS is tasked to ensure and sustain the LGU's critical consciousness in supporting gender and development, women's empowerment and responding to gender issues. It shall take a lead role in direction-setting, advocacy, planning, monitoring and evaluation, and technical advisory in mainstreaming GAD perspectives in the LGU programs, projects, activities, and processes. Specifically, the GFPS shall perform the following functions:

- a) Lead in mainstreaming GAD perspectives in LGU policies, plans and programs. In the process, they shall ensure the assessment of the gender-responsiveness of systems, structures, policies, programs, processes, and procedures of the LGU based on the priority needs and concerns of constituencies and employees, and the formulation of recommendations including their implementation;
- b) Assist in the formulation of new policies such as the GAD Code in advancing women's empowerment and gender equality;
- c) Lead in setting up appropriate systems and mechanisms to ensure the generation, processing, review, and updating of sex-disaggregated data or GAD database to serve as basis in performance-based and gender-responsive planning and budgeting;
- d) Coordinate efforts of different divisions/offices/units of the LGU and advocate for the integration of GAD perspectives in all their systems and processes;
- e) Spearhead the preparation of the annual and performance-based **LGU GAD Plan and Budget (GPB)** in response to the gender issues and or concerns of their locality and in the context of the LGU mandate; and consolidate the same following the form and procedures prescribed in this

Joint Memorandum Circular (JMC). The GFPS shall likewise be responsible for submitting the consolidated GPBs of the LGU;

- f) Lead in monitoring the effective implementation of the annual GPB, GAD Code, other GAD-related policies and plans;
- g) Lead the preparation of the annual **LGU GAD Accomplishment Report (GAD AR)** and other GAD reports that may be required under the MCW and this JMC;
- h) Strengthen linkages with other LGUs, concerned agencies or organizations working on women's rights and gender and development to harmonize and synchronize GAD efforts at various levels of local governance;
- i) Promote and actively pursue the participation of women and gender advocates, other civil society groups and private organizations in the various stages of development planning cycle; giving attention to the marginalized sectors, and
- j) Ensure that all personnel of the LGU including the planning and finance officers (e.g. accountants, budget officers, auditors) are capacitated on GAD. Along this line, the GFPS will recommend and plan an appropriate capacity development program on GAD for its employees as part of and implemented under its regular human resource development program.

5) **Roles and Responsibilities of the LGU GFPS**

a) The **LCE** shall:

- i. Issue policies and/or directives that support gender mainstreaming in the policies, plans, PPAs and services of the LGU as well as in its budget, systems, processes and procedures of the LGU, including the creation, strengthening, modification or reconstitution of the GFPS; and;
- ii. Ensure the implementation of the GPB and approve GAD AR and other GAD-related reports of the LGU as maybe required by the MCW-IRR and this JMC, duly endorsed by the GFPS Executive Committee and with the assistance of the GFPS-TWG.

b) The **GFPS Executive Committee** shall:

- i. Provide policy advice to the LCE to support and strengthen the GFPS and the LGU's gender mainstreaming efforts;
- ii. Direct the identification of GAD strategies, PPAs and targets based on the results of gender analysis and gender assessment, taking into account the identified priorities of the LGU and the gender issues and concerns faced by the LGU's constituents and employees;
- iii. Ensure the timely submission of the LGU GPB, GAD AR and other GAD-related reports to the DILG which shall be consolidated for submission to PCW and appropriate oversight agencies;
- iv. Ensure the effective and efficient implementation of the **GAD PPAs** and the judicious utilization of the GAD budget;
- v. Build and strengthen the partnership of the LGU with concerned stakeholders such as women's groups or CSOs, national government agencies, GAD experts and advocates, among others in pursuit of gender mainstreaming;
- vi. Recommend awards and/or incentives to recognize outstanding GAD PPAs or individuals who have made exemplary contributions to GAD.

c) The **Technical Working Group (TWG)** shall:

- i. Facilitate the gender mainstreaming efforts of the LGU through the GAD planning and budgeting process;

- ii. Formulate the LGU GPB in response to the gender gaps and issues faced by their constituents including their women and men employees;
 - iii. Assist in the capacity and competency development of and provide technical assistance to the offices or units of the LGU. In this regard, the TWG shall work with the Human Resource Development Office (HRDO) on the development and implementation of a capacity development program on GAD for its employees, as necessary;
 - iv. Coordinate with the various units/offices of the LGU and ensure their meaningful participation in strategic and annual planning exercises on GAD including the preparation, consolidation and submission of GPBs;
 - v. Lead the conduct of advocacy activities and the development of information, education and communication (IEC) materials to ensure critical support of local elected officials, department heads and staff, and relevant stakeholders to the GFPS and to gender mainstreaming;
 - vi. Monitor the implementation of GAD-related PPAs and suggest corrective measures to improve their implementation;
 - vii. Prepare and consolidate LGU GAD ARs and other GAD-related reports; and
 - viii. Provide regular updates and recommendations to the LCE or GFPS ExeCom regarding GFPS' activities and the progress of the LGU in gender mainstreaming based on the feedback and reports of concerned LGU offices/units, stakeholders and constituents.
- d) The GFPS Secretariat, and whenever feasible the GAD office or unit designated by the LCE shall assist the GFPS ExeCom and the TWG in the performance of their roles and responsibilities, specifically on the provision of administrative and logistical services; preparation of meeting agenda; and documentation of GFPS' meetings and related GAD activities.
- 6) In the event of a change in local administration, the remaining members of the GFPS ExeCom and TWG shall facilitate the immediate reconstitution of the GFPS and the conduct of GST and other GAD competency development activities for newly-elected local officials.
- 7) LGUs, through their GFPS, shall strengthen their linkages and/or partnerships with the local offices of the NGAs, private sector, academe, Official Development Assistance (ODA) partners and other stakeholders in pursuit of their gender mainstreaming efforts.

B) Establishment and Maintenance of GAD Database

- 1) LGUs, through their Local Planning and Development Offices (LPDO), shall spearhead the setting up and maintenance of the GAD database to serve as basis for gender-responsive planning, programming and policy formulation. The GAD database, which can either be manually operated or developed through software, shall form part of the overall management information system (MIS) of the LGU.
- 2) Sex-disaggregated data and GAD-related information may be derived and/or sourced from the local National Statistics Office (NSO), academe, CSOs as well as from studies, surveys and administrative reports of the local offices of NGAs such as, but not limited to the following: the Department of Agriculture (DA), Department of Environment and Natural Resources (DENR), Department of Agrarian Reform (DAR), Department of Labor and Employment (DOLE), Department of Trade and Industry (DTI).

The sex-disaggregated data and results of the Community-Based Monitoring System (CBMS), the National Household Targeting System for Poverty Reduction (NHTS-PR) and Local Governance Performance Management System (LGPMS) may form part of the GAD database.

(Refer to Annex B: Data Requirements for the LGU GAD Database).

- 3) The LGU GFPS or its TWG shall provide technical assistance to the LPDO in ensuring that the GAD Database is operational.
- 4) Provinces, cities, municipalities and barangays shall be capacitated to develop and/or enhance their GAD Databases. Barangay GFPS shall gather and process sex-disaggregated data and GAD-related information for submission to the city and/or municipality. The city and/or municipality shall consolidate the same for data processing, data analysis and data updating and maintenance of their GAD databases. The consolidated city and/or municipal data shall be submitted to provinces for updating and maintenance of their respective GAD databases.

C) Gender and Development (GAD) Planning and Budgeting

C.1 General Guidelines

- 1) LGUs shall formulate their annual GPBs within the context of their mandates to ensure gender mainstreaming in their policies, programs and projects. GAD planning and budgeting shall be integrated in the regular activities of the LGUs, the cost of implementation of which shall be at least five percent (5%) of their total Annual Budgets. The development, allocation and utilization of the GPB shall be implemented in accordance with this JMC.
- 2) The preparation of the GPB shall be synchronized with the planning and budgeting calendar pursuant to DILG-NEDA-DBM-DOF JMC No. 1 series of 2007: Guidelines on the Harmonization of Local Planning, Investment Programming, Revenue Administration, Budgeting and Expenditure Management.
- 3) The GAD planning and budgeting process shall be incorporated in the Comprehensive Land Use Plan (CLUP), Comprehensive Development Plan (CDP), Annual Investment Program, the Executive-Legislative Agenda (ELA), Provincial Development and Physical Framework Plan (PDPFP) and in sector plans, e.g. disaster risk reduction and management (DRRM) plan. It shall also be guided by the desired outcomes and goals embodied in the MCW, the PPGD, other GAD-related laws, policies and term plans as well as in the UN CEDAW and other relevant international commitments.
- 4) In identifying GAD PPAs, LGUs shall at all times give priority to those that will address emerging and/or continuing issues and concerns on:
 - a) Provision of basic services and facilities to protect and fulfill women's human rights, including their right to protection from all forms of violence;
 - b) Women's economic empowerment, including women's participation in economic governance;
 - c) Participation in local governance and decision-making; and
 - d) Other provisions of the MCW.

[Refer to Annex C: Roles and Responsibilities of Local Government Units (LGUs) in Implementing the Magna Carta of Women].

- 5) For effective planning and implementation of GAD PPAs, LGUs shall ensure that the essential elements in GAD planning and budgeting are in place. Specifically, these elements include the a) creation and strengthening of the LGU GFPS; b) capacity development on gender mainstreaming, gender-responsive planning and budgeting, gender analysis and gender assessment; development and utilization of GAD tools; and c) institutionalization of GAD database. If these are not present or need to be strengthened in the LGU, LGUs shall include them in their GPBs.
- 6) The LCE shall ensure that the GPB is provided with adequate resources. As such, the implementation of the GPB shall not be affected by austerity measures.
- 7) The GAD budget, which is the cost of implementing the GAD plan shall form part of and is not in addition to the LGUs' Annual Budget.
- 8) LGUs shall consult with their employees and constituencies through accredited women or people/civil society organizations, foundations, interfaith organizations, among others to ensure the relevance of their GPBs.

- 9) GAD planning and budgeting shall adhere to Executive Order 43 s. 2011, *Pursuing our Social Contract with the Filipino People through the Reorganization of the Cabinet Clusters*. As such, LGUs shall strengthen their capacity to link their budget with performance and shall enable citizens and civil society to monitor and evaluate these; promote equal gender opportunities in their public policies and programs and ensure transparent, accountable, participatory and inclusive governance resulting to direct, immediate and substantial benefits for the poor.

C.2 Steps in Formulating the LGU GAD Plan and Budget (GPB)

- 1) In consultation with local functionaries and stakeholders, the LGU GFPS shall set the GAD agenda or identify priority gender issues to be addressed by the LGU during the three-year term of its leadership. The GAD agenda shall be the basis for the annual formulation of PPAs to be included in the LGU GPB. The GAD agenda or the priority gender issues, mandates and targets may be derived from the following:
 - i. Review of GAD-related laws and policies relevant to the LGU such as those mentioned in Section 2.0 and item *C.1.4* of this JMC;
 - ii. Results of gender analysis and/or gender assessment using the sex-disaggregated data/information from the LGU GAD database, the Ecological Profile, the CBMS and/or LGPMS and NHTS-PR as well as information from major programs and services of the LGU that reflect the gender gaps and/or issues faced by program/service beneficiaries, women and men constituents and employees.
 - iii. Results of program and project evaluation in terms of benefits to target beneficiaries; and
 - iv. Review of findings from the audit of GAD funds and GAD ARs to surface remaining gender issues that have not been addressed in previous GPBs.
- 2) Identify appropriate PPAs to address priority gender issues that are included in the GPB. PPAs may be client-focused or those addressing gender mainstreaming in regular/flagship PPAs; as well as organization-focused or those addressing gender issues of the LGU and its personnel.
- 3) The GAD Budget is prepared based on the estimated costs of functions and PPAs translated from the demands/commitments identified in the GAD Plan.
- 4) Fill out the GPB and GAD AR forms. (**Refer to Annex D: Guide in Completing the LGU GAD Plan and Budget Form**; and **Annex E: Guide in Completing the LGU GAD Accomplishment Report Form**).

C.3 Costing and Allocation of the GAD Budget

- 1) At least five percent (5%) of the total LGU budget appropriations authorized under the Annual Budget shall correspond to activities supporting GAD PPAs. The GAD budget shall be drawn from the LGU's maintenance and other operating expenses (MOOE), capital outlay (CO), and personal services (PS). The GAD budget shall not constitute an additional budget over an LGU's total budget appropriations.

The five percent (5%) GAD budget shall endeavor to influence the remaining 95% of the LGU budget toward gender-responsiveness.

- 2) Pursuant to Section 37A.1c of the MCW-IRR, the GAD budget may be allocated using any or a combination of the following:
 - i. As a separate GAD fund to support GAD-focused PPAs;
 - ii. As fund to support integrating gender perspectives in regular/flagship programs and projects; and
 - iii. As counterpart fund to support gender-responsive ODA-funded projects.
- 3) The LGU GFPS shall annually monitor and evaluate the utilization and outcome of the GAD budget in terms of its success in influencing the gender-responsive implementation of PPAs funded by the

remaining 95% of the LGU budget (MCW Chapter VI, Sec. 36); the results of which shall be reflected in the forms prescribed in Section 5.0 of this JMC.

- 4) LGUs with ODA-funded projects shall allocate five (5) to thirty (30) percent of ODA funds received from foreign governments and multilateral agencies to support gender-responsive PPAs, provided that the same are aligned with the purpose of the foreign grant and/or the grant agreements between the LGU and the Grantor.

C.4 Attribution to the GAD Budget

- 5) Attributing LGU programs and projects including ODA-funded projects to the GAD budget:
 - a. To gradually increase the gender-responsiveness of LGU programs and projects, the LGU may attribute a portion or whole of their budgets to the GAD budget supporting gender-responsive PPAs. To facilitate this, the LGU shall conduct a gender analysis of their programs and projects through the administration of the HGDG.
 - b. If the LGU is not trained on the HGDG, it may propose a training program on the HGDG in its GPB for the incoming year and may seek the assistance of a gender analysis specialist/expert in the use of and/or administration of the HGDG.
 - c. The administration of the HGDG will yield a maximum score of 20 points for each program or project. Based on the HGDG score, a percentage of the budget of the LGU's existing and proposed regular or flagship program/project may be attributed to the GAD budget. The attribution is guided as follows:

Table 1

HGDG Score	Description	Corresponding Budget for the Year of the Program that may be Attributed to the LGU GAD Budget
Below 4.0	GAD is invisible	0% or no amount of the program/project budget for the year may be attributed to the GAD budget
4.0 – 7.9	Promising GAD prospects (conditional pass)	25% of the budget for the year of the program/project may be attributed to the GAD budget
8.0 – 14.9	Gender sensitive	50% of the budget for the year of the program/project, may be attributed to the GAD budget
15.0 – 19.9	Gender-responsive	75% of the budget for the year of the program/project may be attributed to the GAD budget
20.0	Fully gender- responsive	100% of the budget for the year of the program may be attributed to the GAD budget

- d. Based on its initial result in the HGDG, the LGU will set its target score for a particular program or project. For example, the program or project was rated 4.0 in the HGDG and the LGU would like to achieve a score of 6.0 for said program or project at the end of the year. Hence, the LGU should subsequently plan and estimate the cost of interventions (or cost of gender mainstreaming) to achieve its target. The cost of interventions in making the program or project reach a higher score in the HGDG shall be included in the LGU GPB.
- e. During the preparation of its GAD AR, the LGU will again administer the HGDG test to determine the extent that the targeted HGDG score is attained. This score will be the basis in determining actual expenditure that can be attributed to the GAD budget. In the example above, if the LGU has an HGDG score of 8 (higher than its target), it can attribute 50% of the program's budget to the actual GAD expenditure.
- f. The cost of interventions to mainstream GAD in programs and projects, including those that are funded by ODA may be attributed to the GAD budget.

C.5 Schedule to be observed in GAD Planning and Budgeting

- 1) **January (a year before budget year)** – the LCE shall issue a memorandum order to all LGU departments/offices for the preparation of their annual GPB and annual GAD AR (e.g. LGU FY 2014 GPB and FY 2012 GAD AR)
- 2) **January-February** – All LGU departments/offices including barangays shall formulate their GPBs and GAD ARs of the previous year for submission to the LGU GFPS.

LGUs shall submit their consolidated annual GAD ARs to the DILG Regional Offices, which in turn shall be submitted to the DILG Central Office for consolidation and submission to PCW.

- 3) **March** – The LGU GFPS TWG of component cities and municipalities shall review and consolidate the GPBs. The consolidated GPBs shall be submitted to the Provincial Planning and Development Offices (PPDO) to ensure the alignment of LGU GAD PPAs to the priorities of the province. Afterward, these shall be submitted to the DILG Regional Offices for review and approval. For provinces, highly-urbanized cities (HUCs) and independent component cities (ICCs), the LGU GFPS TWG shall submit the GPBs to the DILG Regional Office for their review and approval.
- 4) **April-May** – DILG-approved LGU GPBs shall be returned to the concerned LGUs for integration of the GAD PPAs in the AIP.
- 5) **June-July** – the following activities are undertaken:
 - i. Integration of identified gender issues and concerns and GAD goals, strategies, objectives, targets and PPAs of the GPB during the formulation, updating or enhancement of the CLUP/CDP/PDPFP/ELA.
 - ii. Review the inclusion of the GAD PPAs of the GPB in the Local Development Investment Program (LDIP) before its approval.
 - iii. Issuance of the Budget Call by the LCE to all LGU departments/offices.
- 6) **July-August** – The following activities are undertaken:
 - i. Integration of the approved GPB in the annual budget proposals of LGU departments/offices; and
 - ii. The Local Finance Committee (LFC) shall ensure the integration of the GPB in the LGU budget proposals during the technical budget hearings.
- 7) **September** – The LFC shall ensure that the identified GAD PPAs are reflected in the Local Expenditure Program (LEP) and the Budget Expenditure and Sources of Financing (BESF).
- 8) **October** – Not later than October 16, the LCE shall ensure that the identified GAD PPAs are included in the Budget Message and in the Executive Budget for submission to the Local Sanggunian for its enactment.
- 9) Within 90 days from the receipt of the submitted Annual or Supplemental Budgets, the DBM Regional Office shall review the annual or supplemental budgets of the HUCs, ICCs and provinces. The Sangguniang Panlalawigan shall review the Municipal Annual/Supplemental Budgets. The Sangguniang Bayan/Panglungsod shall review the Barangay Annual/Supplemental Budgets. The DBM Regional Offices/Provincial/City/Municipal Sanggunian shall ensure that GAD PPAs have the required resource allocation in the Annual Budget.

(Refer to Annex F: Flowchart of the GAD Planning and Budgeting Schedule).

C.6 Submission, Review and Approval of LGU GAD Plans and Budgets

- 1) Provinces, HUCs, ICCs and municipalities within Metro Manila shall submit their GPBs, accompanied by their GAD ARs to the DILG Regional Office for their review and approval. Reviewed and approved GPBs shall be returned to the LGUs for integration in the AIP and funding.
- 2) Component cities and municipalities outside Metro Manila shall submit their GPBs to the PPDO of the Provincial Government to ensure the alignment of the municipal/city GAD PPAs with the priorities of the province and then from the PPDO to the DILG Regional Offices for its review and approval. DILG-approved GPBs shall be returned to the LGUs concerned, for incorporation in their annual budgets to be enacted by their Local Sanggunian.
- 3) In the case of the ARMM, the ARMM line agencies shall submit their GPBs to the Regional Commission on Bangsamoro Women (RCBW) for its review and consolidation, in terms of the correctness and alignment of the entries in the GPB form. After review and consolidation, the RCBW shall submit the GPBs to the Office of the Regional Governor (ORG), for approval and submission to PCW for its endorsement to DBM.
- 4) Barangays shall prepare and submit their GPBs to the City/Municipal PDO to ensure the alignment of the barangay GAD PPAs with the priorities of the city/municipality and then from the City/Municipal PDO, submit the same to the DILG city/municipal LGOO for review and approval. Reviewed and approved GPBs shall be returned to the concerned barangays, for incorporation in their Annual Budgets.
- 5) The LGU GFPS shall ensure that the GPBs of their respective LGUs, including the GPBs of barangays within the city/municipal jurisdiction are carried out according to synchronized local planning and budgeting calendar.
- 6) The GFPS TWG shall review all submitted GPBs and as needed, provide comments or recommendations for revision. The review of GPBs shall focus on the alignment of the GAD plan with the GAD agenda and the correctness and alignment of the entries in each column of the GPB form, e.g. if the proposed activities respond to the identified gender issue or cause of the issue, the issues are correctly identified or formulated, if there are clear indicators and targets, if the proposed budget is realistic, if the number of proposed activities are doable within the year, among others.
- 7) The DILG Regional Offices shall issue review and approve the LGU GPBs based on the gender-responsiveness of their content, e.g. relevance of the GAD PPAs to the identified gender issues and their causes as well as the correctness and alignment of the entries in the GPB form. DILG-approved GPBs shall include a certificate of approval from the DILG Regional Offices which will be returned to the concerned LGUs for incorporation in their Annual Budgets to be enacted by their Sanggunian.

C.7 Implementation and Monitoring of the LGU GAD Plan and Budget

- 1) Upon receipt of the enacted GPB which includes a certificate of approval from the concerned DILG Regional Office, the LCE shall issue an appropriate policy directive, copy furnished the DILG Regional Office, to disseminate and implement the GPB. The directive shall also mandate the LGU GFPS to: a) provide technical assistance in the implementation of the GPB; b) monitor its implementation; c) ensure the preparation and submission of GAD AR; and d) consolidate reports on the implementation of the GPB.
- 2) The LGUs through their LCEs shall inform the DILG Regional Office in writing if there are changes in the DILG-approved GPB and/or if there is a need to implement additional PPAs relevant to current gender issues or GAD-related undertakings. The DILG Regional Office, in turn, shall acknowledge receipt of adjusted GPB and shall inform the LGUs if the GAD PPAs or activities in the adjusted GPB are in accordance with this JMC.
- 3) As needed, LGUs may seek the assistance of DILG, PCW, DBM, NEDA, other oversight agencies, civil society organizations (CSOs), gender specialists/experts and other stakeholders in monitoring the results of their GAD PPAs.

- 4) The GFPS shall regularly monitor if the GAD budget is being spent for what it was intended for and check on the actual cost of implementing the GAD activities.

C.8 Preparation and Submission of LGU GAD Accomplishment Report

- 1) The GFPS shall prepare their annual GAD AR based on the DILG-approved GPB or the enacted GPB following the form prescribed in Annex E. Activities completed until the end of the year may be included in the final LGU GAD AR.
- 2) Barangays shall submit their GAD ARs for consolidation and review of the cities/municipalities; while cities/municipalities shall submit their GAD ARs for review and consolidation of their respective provinces. Provinces, ICCs and HUCs shall submit their GAD ARs to the DILG Regional Offices.
- 3) In case the LGU attributes a portion or the whole of the budget of its major program/project to the GAD budget, it shall subject the same to the HGDG test to determine the actual expenditures that may be attributed to the GAD budget (Refer to item 5 of Section C.4). As required, the LGU may present the HGDG test results to the DILG Regional Office or to the GAD funds auditor as evidence that the GAD plan was duly implemented and the GAD budget judiciously utilized.
- 4) Accomplishments on the implementation of GAD PPAs funded under ODA projects, including the amount spent for such shall also be reflected in the GAD AR.
- 5) The annual GAD AR shall be accompanied by the following: (1) brief summary of the reported program or project; (2) copies of reported policy issuances; (3) results of HGDG tests; and (4) actions taken by the LGU on the COA audit findings and recommendations.
- 6) The DILG shall assess the actual accomplishments of LGUs on GAD and prepare an annual integrated GAD AR based from the GAD ARs gathered from its regional offices for submission to PCW.

C.9 GAD Funds Audit

- 1) Pursuant to MCW Section 36 and this JMC, the Commission on Audit (COA) shall conduct an annual audit of GAD funds for the purpose of determining the judicious use of the GAD budget and the efficiency and effectiveness of interventions in addressing gender issues towards the realization of the objectives of the country's commitments, plans, and policies on GAD, gender equality and women's empowerment.
- 2) Provided further in MCW-IRR Section 37, the COA shall conduct an annual audit of GAD funds of all government agencies, offices, bureaus, SUCs, GOCCs, LGUs, all government instrumentalities and all others concerned.

D. Mainstreaming Gender Perspectives in Local Development Plans

- 1) To ensure a sustainable and performance-based planning and budgeting, all LGUs shall mainstream GAD concerns in their local development plans. The procedures for mainstreaming gender perspective in local plans shall be in accordance with the local planning process and corresponding timeframe provided for in the DILG-NEDA-DBM-DOF JMC No. 1 Series of 2007;
- 2) Mainstreaming gender perspectives in local plans shall consider the planning structure, the multi-sectoral development and land use plans, the planning process, the LDIP/AIP and the budget.
- 3) To ensure effective gender mainstreaming in local development plans, the following activities shall be undertaken:
 - i. Revisit the LGU's vision, sectoral plans and investment program and assess them according to gender-responsiveness;

- ii. Gather, collate and analyze the LGU's situation through the use of gender analysis and/or gender assessment tools, including the use of the GAD database to determine the status of women and men and the gender gaps or issues that they face; as well as to determine the capacity of the LGU to promote, respect and fulfill women's human rights or to plan, implement and monitor GAD interventions;
- iii. Provide the LDC and its sectoral committees with data and information essential to the formulation of gender-responsive plans and PPAs;
- iv. Review sectoral or functional objectives, targets and programs, projects and activities for gender-responsiveness;
- v. Conduct public hearings on sectoral planning, projects and activities;
- vi. Monitor and evaluate gender-responsive programs and projects; and
- vii. Reflect the GAD PPAs as indicated in the LGU GPB in the AIP.

(Refer to PCW Guidelines for Mainstreaming Gender Perspectives in the Comprehensive Development Plan at www.pcw.gov.ph).

E. Formulation/Enhancement and Implementation of the LGU GAD Code

- 1) All LGUs shall formulate and pass their GAD Codes or ordinances to support the LGU's efforts in promoting, protecting and fulfilling women's human rights, women's economic empowerment and gender-responsive governance towards the attainment of gender equality and women's empowerment.
- 2) The LGU GFPS shall assist the Local Sanggunian in the formulation of a GAD Code or ordinance.
- 3) Funding requirements in the formulation and implementation of the Code shall be charged to the LGU GAD budget.
- 4) LGUs shall ensure that the pertinent provisions of the GAD Code are integrated in local development plans.

(For the step-by-step formulation of the LGU GAD Code, refer to the GAD Code Guidelines of the Philippine Commission of Women at www.pcw.gov.ph).

5.0 MONITORING AND EVALUATING THE IMPLEMENTATION OF THE MAGNA CARTA OF WOMEN

- 5.1 All LGUs shall establish, enhance, strengthen and/or maintain a gender responsive monitoring and evaluation (M&E) system. In establishing and/or strengthening an M&E System, the LCE of provinces, cities and municipalities shall issue an Executive Order or Administrative Order creating the M&E Team.
- 5.2 The M&E Team, where existent, e.g. Local Project Monitoring Team shall expand its functions and its membership to include the members of the suggested GAD M&E Team. The GAD M&E Team shall be composed of the GFPS TWG Chair, P/C/M Planning and Development Coordinator, HRM Officer, Budget Officer, DILG LGOO, representative/s of the LCE, CSO representative/s specifically from women's organizations and the academe. The GAD M&E Team shall invite the concerned implementing office or unit of the GAD PPAs during the monitoring and evaluation period.
- 5.3 The LGU GFPS shall monitor the implementation of the annual GPB and assess the status of the LGU's institutional mechanisms on gender mainstreaming annually.

- 5.4 LGUs, through their GFPS, shall prepare annual status reports on the institutional mechanisms for gender mainstreaming and submit these to the DILG Regional Office for consolidation (**Refer to Annex G: LGU Status Report on Institutional Mechanisms for Gender Mainstreaming**).
- 5.5 LGUs shall submit their annual GAD ARs formulated based on their GPBs to the City/Municipal Government in case of barangays, to the Provincial Government, in case of cities and municipalities and to the DILG Regional Offices in case of provinces not later than end of January of the ensuing year for review and consolidation (**Refer to Annex E**).
- 5.6 The DILG Regional Offices shall review and consolidate the GAD ARs and status reports submitted to them by the LGUs for submission to the DILG-Bureau of Local Government Development (DILG-BLGD).
- 5.7 The GAD M&E Team shall evaluate the outcomes of the LGU GAD policies, programs and projects and submit a GAD Evaluation Report to the DILG Regional Office at the end of the LCE's three-year term. The submission shall be done not later than June of the next term (**Refer to Annex H: LGU GAD Evaluation Report**).
- 5.8 All M&E activities shall be included in the annual GPB.
- 5.9 The DILG-BLGD shall review the consolidated LGU GAD ARs, status reports of institutional mechanisms and GAD evaluation reports. The consolidated annual GAD ARs and status reports shall form part of the DILG Annual GAD AR for submission to PCW within March of every year, starting 2014. The consolidated GAD evaluation reports shall be included in the DILG Annual GAD AR at the end of the LCE's three-year term as appropriate.

6.0 ROLES OF OVERSIGHT AGENCIES

6.1 The Department of the Interior and Local Government (DILG) shall:

- a. Consolidate the approved LGU GPBs and GAD ARs for monitoring and evaluation purposes;
- b. Provide technical assistance on the formulation of LGU GPBs including the capacity development of LGUs on gender analysis, GAD planning and budgeting and gender mainstreaming in cooperation with PCW and other concerned agencies;
- c. Assist the PCW, DBM, and NEDA in the enhancement and updating of existing guidelines and tools on GAD planning and budgeting, gender mainstreaming, gender analysis and gender assessment at the local level;
- d. Assist the LGUs in the formulation, implementation and monitoring and evaluation of their GAD Codes and other GAD-related ordinances in close coordination with PCW;
- e. Provide technical assistance to LGUs on the application of the HGDG in local program/project design, development, management, implementation, monitoring and evaluation;
- f. Monitor and evaluate LGU compliance on the following mechanisms which shall be reflected in the consolidated reports (Refer to 5.9 of Section 5.0), as appropriate:
 - i. Formulation and implementation of LGU GPBs and GAD ARs
 - ii. Utilization of the 5% GAD Budget
 - iii. Formulation of the GAD Code
 - iv. Creation/re-organization and functionality of GFPS or similar GAD mechanisms
 - v. Establishment of the LGU GAD Database
 - vi. Organization and functionality of Local Councils for the Protection of Children (LCPCs)
 - vii. Functionality of VAWC Office/Desk and Women's Shelter
 - viii. Mainstreaming gender perspectives in the PDPFP/CLUP/CDP/AIP//ELA
 - ix. Functionality of the GAD Office/Unit, if any
 - x. Creation of Local Media Boards

- g. Conduct appropriate response to the recommendation of the Commission of Human Rights (CHR) on the non-compliance of LGUs to the provisions of the MCW including non-compliance to the 5% GAD budget policy; and
- h. Formulate and/or as necessary, utilize its incentives and awards system, e.g. the Seal of Good Housekeeping to recognize the LGUs' outstanding accomplishments and/or good practices on GAD in partnership with PCW, concerned agencies and other stakeholders.

6.2 The Philippine Commission on Women (PCW) shall:

- a. Spearhead the enhancement, updating of and provision of technical assistance relative to existing guidelines and tools on gender-responsive planning and budgeting, gender analysis, GAD Code formulation, gender mainstreaming, gender audit and/or gender assessment at the local level in partnership with DILG, DBM, NEDA, civil society organizations, academe and other stakeholders;
- b. Take the lead in advocating the use of the HGDG for program and/or project design, development, management, implementation, monitoring and evaluation, in partnership with NEDA and DILG;
- c. Lead the development of a monitoring and evaluation system to determine progress and results of implementing the MCW in partnership with DILG, NEDA, DBM and concerned agencies; and
- d. Provide technical assistance and as necessary, support the capacity building of DILG, NEDA and DBM to enable them to perform their roles as stipulated in this JMC.

6.3 The Department of Budget and Management (DBM) shall:

- a. Provide technical assistance to LGUs to ensure that they adopt a gender-responsive and performance-based approach to LGU budgeting;
- b. Assist the PCW, DILG and NEDA in the enhancement and updating of existing guidelines and tools on gender-responsive planning and budgeting, gender mainstreaming, gender audit and/or gender assessment at the local level;
- c. Ensure that Major Final Outputs, indicators and targets of the LGUs under their Organizational Performance Indicator Framework (OPIF) are gender-responsive; and
- d. Assist the PCW, DILG and NEDA in the development of a monitoring and evaluation system to monitor the GAD budget utilization of LGUs.

6.4 The National Economic and Development Authority (NEDA) shall:


- a. Assist the PCW, DILG and DBM in the enhancement and updating of existing guidelines and tools on gender-responsive planning and budgeting, gender mainstreaming, gender audit and/or gender assessment at the local level;
- b. Develop mechanisms, in consultation with PCW, DILG, DBM, concerned agencies and other stakeholders, to ensure that the 5%-30% allocation of funds received from ODA-funded projects of foreign governments and multilateral agencies are achieved and sustained to enable LGUs to respond to gender issues;
- c. Advocate the use of the HGDG for project design, development, management, implementation, monitoring and evaluation and provide technical assistance to provinces on the utilization of the HGDG, in partnership with PCW; and
- d. Provide technical assistance to provinces in mainstreaming GAD concerns in the formulation and/or updating of the PDFFP.


7.0 REPEALING CLAUSE

- 7.1 The contents and specific provisions of the MCW, and all other policy guidelines cited in this circular that are consistent, supportive and complementary to the provisions stated herein shall become part and parcel of this JMC.
- 7.2 All other issuances inconsistent or contrary to the provisions of this JMC, in particular the DILG-NCRFW-DBM JMC 2001-1 are hereby repealed.

8.0 EFFECTIVITY


This Joint Memorandum Circular shall take effect immediately.

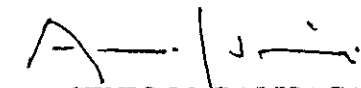

REMEDIOS I. RIKKEN
Chairperson
Philippine Commission on Women


MANUEL A. ROXAS II
Secretary
Department of the Interior and Local Government

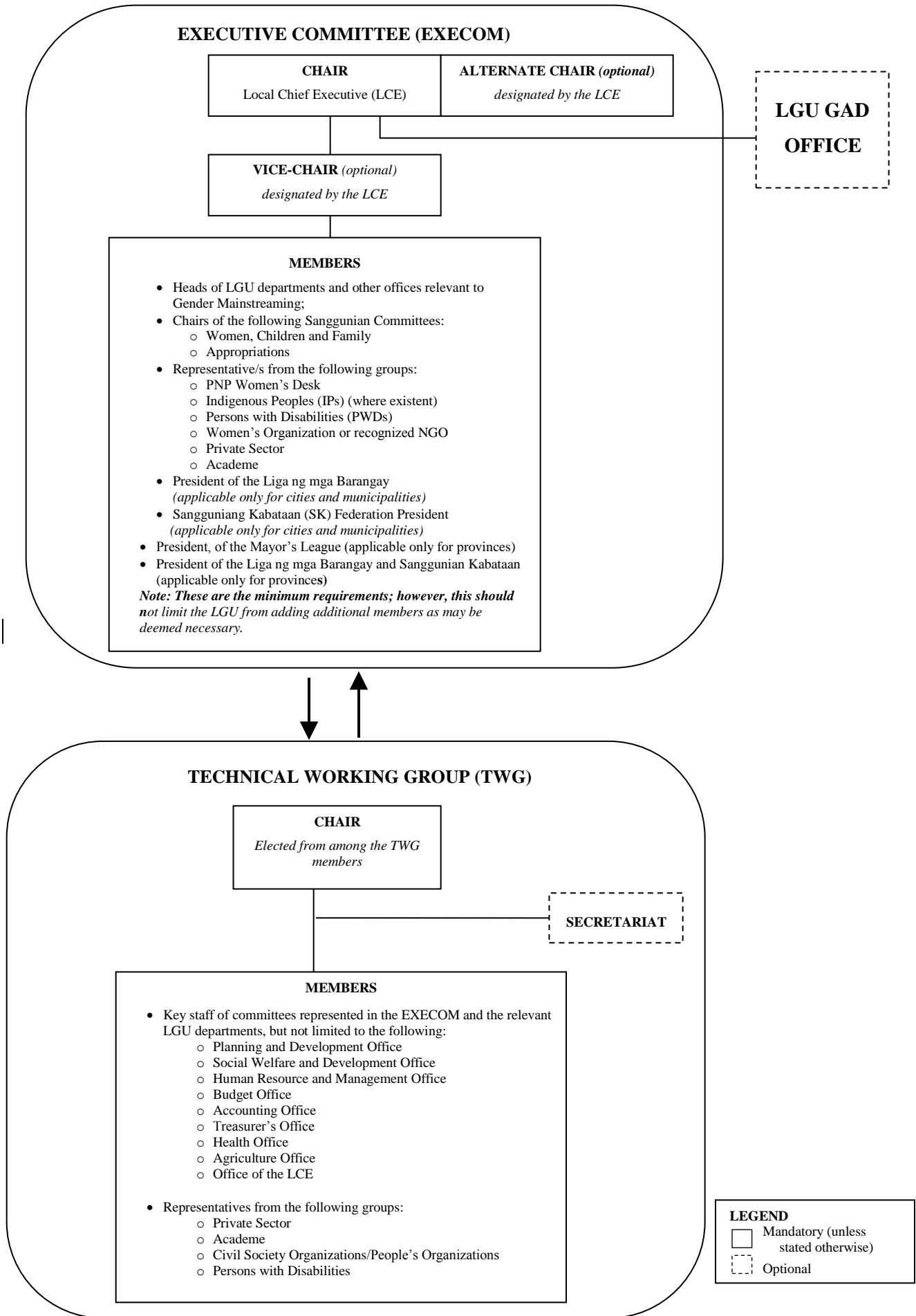


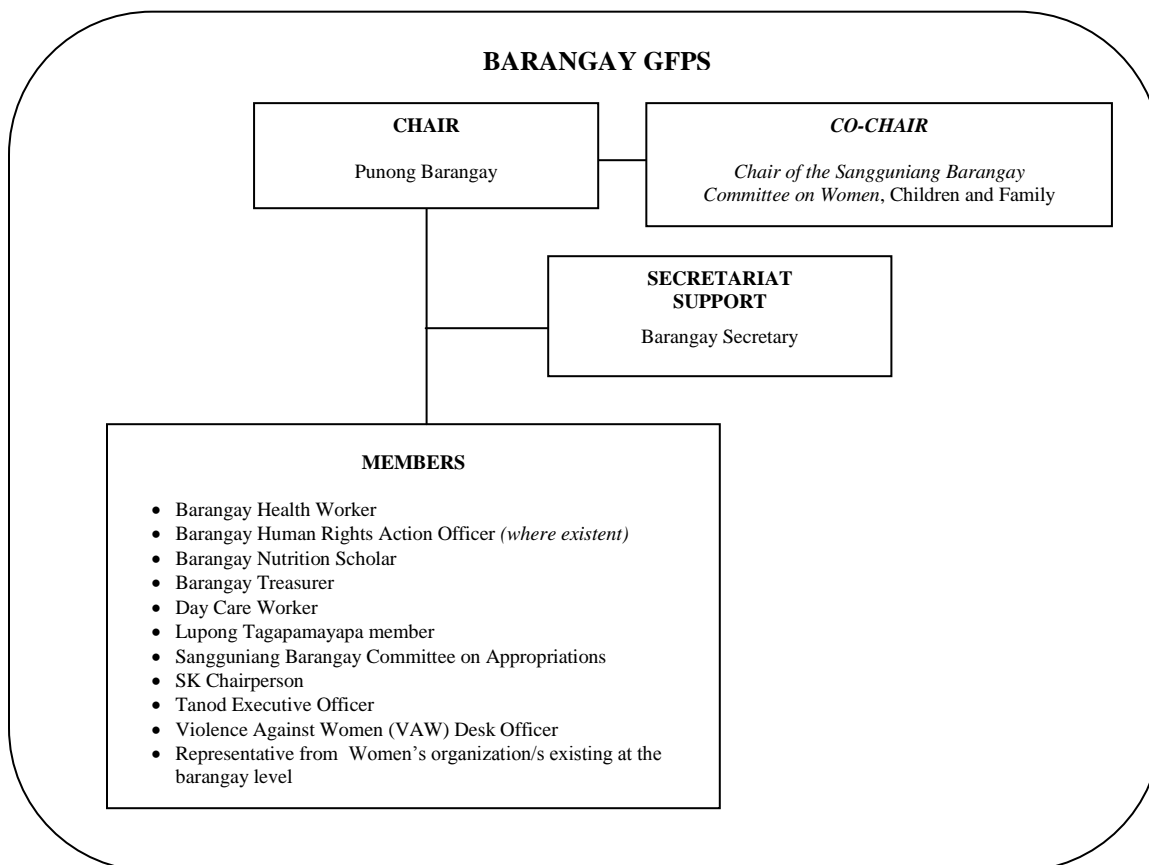
DILG-OSEC OUTGOING 13-00162


FLORENCIO B. ABAD
Secretary
Department of Budget and Management


ARSENIO M. BALISACAN
Secretary of Socio-Economic Planning and
Director-General
National Economic and Development Authority

ANNEX A: ORGANIZATIONAL STRUCTURE OF THE LGU GAD FOCAL POINT SYSTEM (GFPS)





NOTES

1. An LGU may establish a GAD Office or unit depending on its needs, capacity and resources. However, once established, the GAD Office shall be under the Office of the LCE.
2. Additional members may also join the EXECOM and/or the TWG if the LGU deems appropriate or necessary.
3. The GFPS TWG Chair may opt to designate a secretariat to assist the TWG in its functions.

ANNEX B: DATA REQUIREMENTS FOR THE LGU GAD DATABASE

Section 37 of the MCW-IRR mandates all LGUs to develop and maintain LGU GAD Database as source of information for gender-responsive planning, programming and policy formulation. On the other hand, the DILG's Guide to Ecological Profiling encourages national government agencies operating in the LGU to "provide guide/tools in developing indicators specific to various development/sectoral issues and concerns", which in this case, refers to **gender issues and concerns**.

To set up the GAD Database, the LGU may utilize its existing database, planning and data-gathering tools and management information systems to generate gender statistics, age and sex-disaggregated data and other GAD-related information from primary and secondary sources of data such as surveys, studies, focus group discussion (FGD) results, progress reports, monitoring and evaluation results and ODA reports¹.

The LGU GFPS and the DILG Operations Field Officer assigned to the LGU shall assist the Local Planning Development Office (LPDO) in the generation and processing of sex-disaggregated data and GAD-related information. Other data-producing LGU departments and national government agencies operating at the local level with regional and/or local presence shall be tapped by the LPDO to provide sex-disaggregated information to complement the GAD database.

Provinces, cities and municipalities shall build their capacities on the establishment and maintenance of their respective GAD Database, to enable them to assist, coach or mentor the barangays within their jurisdiction. Barangays shall make use of existing data-gathering tools, forms and methodologies for the collection of sex-disaggregated barangay data. The same shall feed into the city and municipal GAD databases for processing, consolidation and analysis. Likewise, information from the GAD databases of cities and municipalities shall be consolidated and fed into the GAD databases of provinces.

Purpose of the LGU GAD Database

As gender statistics and GAD-related information are crucial for evidenced-based planning and policymaking, the LGU GAD Database shall serve the following purposes:

- 1) To aid in gender analysis of the LGU situation by surfacing gender gaps and/or differences among women and men in terms of their access to basic services and facilities, control of resources and enjoyment of rights, privileges, benefits and rewards.

Information resulting from gender analysis shall be considered and integrated into the LGU GAD Plan and Budget, gender-responsive CLUP/CDP/ELA and the LGU GAD Code as provided for in this JMC.

- 2) To inform the LGU on the extent of implementation and/or attainment of gender equality and women's empowerment goals and outcomes.

The GAD Database shall help monitor progress made in the implementation of international commitments and national laws on GAD, including the results of said implementation.

- 3) To provide baseline data on the status of women and men in the LGU as provided for in Section 41 of the MCW-IRR. The process of coming up with the baseline report shall be guided by this JMC and/or determined by concerned oversight agencies.

The LGU GAD Database contains the minimum GAD indicators matched with the biophysical, socioeconomic, cultural and built environment components of the LGU Ecological Profile (EP)² (Refer to the Tables below).

The GAD indicators are derived from the sectoral and gender mainstreaming provisions of the MCW-IRR, the Core GAD indicators and the Gender-responsive LGU Ka Ba (GeRL Ka Ba) Self-Assessment. On the

other hand, demographic and social development indicators are drawn from CBMS, LGPMS and data-producing agencies such as the NSO, NSCB, DSWD and DepEd.

LGUs are encouraged to exhaust all available resources for the collection and processing of data requirements of the GAD Database. The absence of certain data requirements should not prevent them from developing their GAD Database.

I. SOCIAL DEVELOPMENT SECTOR

SOCIAL SUBSECTOR/S	DATA REQUIREMENTS	DATA SOURCE
<i>Demography</i>	Projected population by sex	National Statistics Office (NSO) or latest Census-based population projections, GERL
	Projected life expectancy at birth, by sex	NSO
	Total household population by age group, by sex	Latest Census of Population and Housing
	Total population by age group, by sex	Latest Census of Population and Housing or latest
	Sex ratio	NSO
	Total population by marital status, sex-disaggregated	NSO
	Singular mean age at marriage ³ , by sex	NSO
	Number and percentage of disabled persons by type of disability, sex-disaggregated	NSO
	Population growth rate, by sex	NSO, GERL
	Average household size	NSO, GERL
	Percentage of male-/female-headed household by civil status	NSO, GERL
	Registered live births	NSO/Vital Statistics Reports/Civil Registrar's Office
	Registered deaths	NSO/Vital Statistics Reports/Civil Registrar's Office
	Registered marriages	NSO/Vital Statistics Reports/Civil Registrar's Office
<i>Education⁴</i>	Simple literacy rate (10 years old and over) ⁵ , by sex	NSO
	Functional literacy rate (10-64 years old and over) ⁶ , by sex	NSO
	Ratio of girls to boys in primary education	Department of Education (DepEd), MDGs
	Ratio of girls to boys in secondary education	DepEd, MDGs
	Ratio of girls to boys in tertiary education	CHED ,MDGs
	Availability of functional literacy training program for women	DepEd, GERL
	Distribution of the population 6 years old and over by highest educational attainment (%) <ul style="list-style-type: none"> • no education • some elementary • completed elementary • some high school • completed high school • college or other 	Functional Literacy, Education, and Mass Media Survey (FLEMMS), NSO
	Percentage of population 6-24 years old by level currently attending, by age group and by sex <ul style="list-style-type: none"> • not currently attending • attending 	FLEMMS/NSO/DepEd

SOCIAL SUBSECTOR/S	DATA REQUIREMENTS	DATA SOURCE
	<ul style="list-style-type: none"> • kinder/prep/nursery • elementary • high school • post secondary • college • post graduate 	
	Elementary school completion rate, by sex	DepEd
	Classroom-to-pupil ratio in elementary and secondary schools	DepEd
	Teacher-to-pupil ratio in elementary and secondary schools	DepEd
	High school completion rate, by sex	DepEd
	Percent of college graduates by cluster program	Commission on Higher Education (CHED)
	College graduation by sex	CHED
	Post secondary and higher education graduates by major programs	CHED
	Most common field of study	CHED
	Number of technical vocational education and training (TVET) graduates, by sex	Technical Education and Skills Development Authority (TESDA)
	Coordination mechanisms with PNP, DOJ, CHR, DSWD and LGU established to appropriate assistance to female faculty, personnel and students who are victims of rape, sexual harassment and other forms of violence against women and discrimination. (MCW IRR Sec. 16 B.5)	Local Committee Against Trafficking-Violence Against Women and Children (LCAT-VAWC) ⁷ , Philippine National Police (PNP), CHED, DepEd, Department of Social Welfare and Development (DSWD)
Health	Prevalence rates of HIV/AIDS, malaria, tuberculosis, and other diseases, latest	Provincial/City/Municipal Health Office (P/C/MHO), Community Based Monitoring System (CBMS), MDGs
	Nutritional status, by sex and group (CORE GAD)	Local Nutrition Council, P/C/MHO, CBMS, Local Government Performance Management System (LGPMS)
	Nutritional status of pregnant women (incidence of malnutrition), 2 reference years (CORE GAD)	Local Nutrition Council, P/C/MHO, CBMS, LGPMS
	Life expectancy, by sex, 2 reference years (CORE GAD)	NSO, CBMS, National Household Targeting System (NHTS), P/C/MHO
	Percentage of family planning users, by sex, 2 reference years	NSO, CBMS, NHTS, P/C/MHO, DSWD
	Child mortality rate, by sex, 2 reference years (CORE GAD)	P/C/MHO, CBMS, NSO, GERL
	Mortality by leading causes, by age, and by sex, 2 reference years (CORE GAD)	P/C/MHO, CBMS, NSO, GERL P/C/MHO, CBMS, LGPMS, Philippine Health Insurance Corporation (PHIC), GERL
	Morbidity by leading causes, by age, and by sex, 2 reference years (CORE GAD)	
	Incidence of sexually transmitted diseases	

SOCIAL SUBSECTOR/S	DATA REQUIREMENTS	DATA SOURCE
	(STD) by sex, 2 reference years (CORE GAD)	
	Incidence of reproductive tract infection (RTI) by sex, 2 reference years (CORE GAD)	
	Maternal mortality rate (CORE GAD)	
	Infant mortality rate	P/C/MHO, CBMS, LGPMS,
	Number of cases of teenage pregnancy	Philippine Health Insurance Corporation (PHIC), GERL
	Percentage of households with access to family planning services	
	Percentage of population covered by Philhealth and other health financing schemes (PDP 2011-2016)	P/C/MHO, CBMS, LGPMS, Provincial/City/Municipal Social Welfare and Development Office (P/C/MSWDO)
	Percentage of households with source/access to safe drinking water (PDP 2011-2016)	
	Percentage of households without sanitary toilets, latest	
	Presence of barangay health center	
	Presence of garbage disposal system	
	Disease control program for sexually transmitted diseases or HIV/AIDS (could be an info dissemination program)	
	Availability of family planning services using the Reproductive Health Framework	
	Availability of the following services for women <ul style="list-style-type: none"> • Counseling services for women • Pap smear 	
	Breast cancer exam (including mammogram) <ul style="list-style-type: none"> • Availability of public comfort rooms 	
	Availability of water	
	(Social Development, Results Matrices, PDP 2011-2016) <ul style="list-style-type: none"> • Maternal mortality rate per 100,000 live births decreased • Infant mortality rate per 1,000 live births decreased • Under five mortality rate per 1,000 live births decreased • Prevalence of underweight children under five years of age decreased • Proportion of households with per capita intake below 100% dietary energy requirement decreased • Contraceptive Prevalence Rate (all methods) increased • HIV Prevalence maintained • Proportion of population (HH) with access to safe water increased • Proportion of population (HH) with access to sanitary toilet facilities increased 	

SOCIAL SUBSECTOR/S	DATA REQUIREMENTS	DATA SOURCE
	<ul style="list-style-type: none"> Population with access to affordable essential drugs increased National Health Insurance Program coverage increased National Health Insurance Program enrolment rate increased from 74% (2010 baseline) to 100% (end-of-plan target) 	
	<ul style="list-style-type: none"> Proportion of births attended by skilled health personnel 	P/C/MHO, CBMS
	Death rates of HIV/AIDS, malaria, tuberculosis, and other diseases, latest	P/C/MHO, CBMS
	Number of women who reported equal/full access of women to comprehensive, quality and affordable health services (including prevention and treatment of diseases; sexual and reproductive health services), latest	P/C/MHO, CBMS, Focus Group Discussions (FGDs), NGOs/POs
	Percentage of population that accessed secondary and tertiary health services, by sex, 2 years	P/C/MHO, CBMS
	Percentage of budget allocated for medicines, medical supplies and equipment, nutrition services, clinics, health centers and other health facilities (e.g. lying-in facilities), latest	Local Finance Committee (LFC) Office of the Local Budget Officer
	Number of women who accessed quality maternal, and post-partum care and services from health facilities and qualified health personnel, 2 years	P/C/MHO, CBMS
	Presence of a well-maintained health center with private rooms for physical exam/counseling	CBMS, LGPMS, C/MHO
	Percentage of women who reported to have equal decision on the number of children and number of years between pregnancies over number of women interviewed, latest	P/C/MHO, CBMS, FGDs
	Number of adolescents who reported attendance to orientation on the prevention of early pregnancies and STDs, latest	P/C/MHO, CBMS
	<p>Policies, programs, guidelines, and services for the implementation of comprehensive, culture-sensitive and gender-responsive health programs and services</p> <p>Note: Section 20 B (1-7); C4 a-b Women's health risks related to pregnancy, child-birth complications and gender-based violence</p> <p>(MCW-IRR Sec. 20)</p>	P/C/MPDO, P/C/MHO, Local Population Office
	<p>Programs for maternal care developed and implemented, to include pre-natal services, delivery and post-natal services to address pregnancy and infant health and nutrition</p> <p>(MCW-IRR Sec. 20 A.1)</p>	P/C/MPDO, P/C/MHO, Local Population Office
	Comprehensive health information and	P/C/MPDO, P/C/MHO, Local

SOCIAL SUBSECTOR/S	DATA REQUIREMENTS	DATA SOURCE
	education programs implemented/provided: <ul style="list-style-type: none"> • Age appropriate adolescent health and sexuality education in both public and private schools • Sexuality education for parents • Programs for elderly in every barangay to promote and maintain their well-being and social functioning • Trainings for health service providers/ educators • Teen centers providing health and sexuality education and counseling (MCW-IRR Sec. 20 C.)	Population Office
	Maternal and pre-natal services delivered and post natal services addressing pregnancy and infant health nutrition (MCW-IRR Sec. 20 A 1-11)	P/C/MHO, Local Population Office
	Program for breastfeeding and proper nutrition for lactating mothers (MCW-IRR Sec. 20 A 1-11)	P/C/MHO, Local Population Office
	Family planning programs that promote responsible, ethical, legal, safe and effective methods (MCW-IRR Sec. 20 A 1-11)	P/C/MHO, Local Population Office
	Family and state collaborations on youth sexuality education and health services (MCW-IRR Sec. 20 A 1-11)	P/C/MHO, Local Population Office
	Prevention and management of reproductive tract infection including STIs, HIV and AIDS (MCW-IRR Sec. 20 A 1-11)	P/C/MHO, Local Population Office
	Prevention and management of reproductive-related illnesses (breast and cervical cancers) and other gynecological conditions and disorders (MCW-IRR Sec. 20 A 1-11)	P/C/MHO, Local Population Office
	Prevention of abortion and management of pregnancy-related complications (MCW-IRR Sec. 20 A 1-11)	P/C/MHO, Local Population Office
	Health services that include psychosocial, therapeutic, medical and legal interventions and assistance to VAWC victims and survivors (MCW-IRR Sec. 20 A 1-11)	P/C/MHO, Local Population Office
	Prevention and management of infertility and sexual dysfunction	P/C/MHO, Local Population Office

SOCIAL SUBSECTOR/S	DATA REQUIREMENTS	DATA SOURCE
	(MCW-IRR Sec. 20 A 1-11)	
	Care for elderly women (MCW-IRR Sec. 20 A 1-11)	P/C/MHO, Local Population Office
	Management, treatment, and intervention of mental health problems of women and girls (MCW-IRR Sec. 20 A 1-11)	P/C/MHO, Local Population Office
	Human resource development plan to ensure sufficient number of skilled health professionals to attend to all deliveries and availability of qualified and capable health service providers including coordination with the academe, a human resource deployment program to meet LGU needs. (MCW-IRR Sec. 20 B. 6 b.i and b.ii)	P/C/MHO, Local Population Office
	Inter-local health zones organized for the purpose of ensuring the provision of health services for neighboring communities, in coordination with DOH (MCW-IRR Sec. 20 B. 6. d)	P/C/MPDO, P/C/MHO, Local Population Office
	Local health boards strengthened to respond to the health needs of girls, female adolescents, women and women senior citizens (MCW-IRR Sec. 20 B 6.e)	P/C/MPDO, P/C/MHO, Local Population Office
	Communities organized to implement health programs for women and girls, in partnership with the private sector (MCW-IRR Sec. 20 B 6.g)	P/C/MPDO, P/C/MHO, Local Population Office
Special Benefit Leave	CSC guidelines on special leave benefit for women due to surgery caused by gynecological disorders adopted and implemented (MCW-IRR Sec. 21 B)	HRMO
	Number of women who availed of the special leave benefits due to surgery of gynecological disorders, with full pay based on gross monthly compensation subject to existing laws, rules and regulations (MCW-IRR Sec. 21 B)	HRMO
	Number of cases of violation of the guidelines reported and/or addressed (MCW-IRR Sec. 21 B)	HRMO
Shelter	Policies and programs to ensure housing for women belonging to the marginalized sectors (MCW-IRR Sec. 24)	Local Housing Board, P/C/MPDO, National Housing Authority (NHA ⁸ , through Area Management Offices), Home Mutual Development Fund (HMDF/PAG-IBIG) and other

SOCIAL SUBSECTOR/S	DATA REQUIREMENTS	DATA SOURCE
		shelter agencies
	Policies and guidelines that ensure women's participation in land use, zoning and community planning and development (MCW-IRR Sec. 24 A.1)	P/C/MPDO, Local Housing Board, Sangguniang Panlalawigan/Panglungsod/Bayan
	Capacity building and skills training in shelter and urban development for women (MCW-IRR Sec. 24 A.1)	P/C/MPDO, Local Housing Board
	Women participating in capacity building and skills training in shelter and urban development (MCW-IRR Sec. 24 A.1)	P/C/MPDO, Local Housing Board
	Existing policies guidelines reviewed to ensure gender-sensitivity and gender-responsiveness during relocation, resettlement, demolition and eviction (MCW-IRR Sec. 24 A.5)	P/C/MPDO, Local Housing Board
	Monitoring and evaluation of gender design features in housing and urban development and all other kinds of infrastructure plans and strategies (MCW-IRR Sec. 24 A.6)	P/C/MPDO, Local Housing Board
	Massive information dissemination campaigns undertaken to increase the awareness of women on their property and housing rights (MCW-IRR Sec. 24 A.7)	P/C/MPDO, Local Housing Board
	Proportion of households who are informal settlers [by sex], 2 reference years	NSO, NHA and other applicable shelter agencies
	Proportion of households with dwelling structures unable to protect them from the elements, 2 reference years	LPDO, NHA and other applicable shelter agencies
Social Welfare – WEDC	Gender responsive, rights based and culture-sensitive services and interventions implemented for WEDC and their families. (MCW-IRR Sec. 34 B)	P/C/MSWDO, P/C/MHO
	Policy and/or guidelines formulated to implement gender-responsive detention and prison facilities. (MCW-IRR Sec. 34 C)	P/C/Municipal Jails, Bureau of Jail Management and Penology (BJMP), P/C/MSWDO
	Detention areas and prisons with segregated facilities, health and sanitation services for women, including clean and sanitary toilets. (MCW-IRR Sec. 34 C)	
	WEDC provided with temporary and protective custody (MCW-IRR Sec. 34 A)	P/C/MSWDO
	WEDC provided with medical and dental services.	P/C/MSWDO, P/C/MHO

SOCIAL SUBSECTOR/S	DATA REQUIREMENTS	DATA SOURCE
	(MCW-IRR Sec. 34 A)	
	WEDC provided with psychological and psychiatric evaluation.	P/C/MSWDO
	(MCW-IRR Sec. 34 A)	
	WEDC provided with counselling and Critical Incident Stress Debriefing (CISD).	P/C/MSWDO
	(MCW-IRR Sec. 34 A)	
	WEDC provided with legal services.	P/C/MSWDO, PAO
	(MCW-IRR Sec. 34 A)	
	WEDC provided with productivity skills, capacity building and/or livelihood assistance.	P/C/MSWDO, PESO, P/C/MAO, DOST, DOLE
	(MCW-IRR Sec. 34 A)	
	WEDC provided with education.	P/C/MSWDO, DepEd
	(MCW-IRR Sec. 34 A)	
	WEDC provided with financial assistance	P/C/MSWDO
	(MCW-IRR Sec. 34 A)	
	WEDC provided with transportation assistance.	P/C/MSWDO
	(MCW-IRR Sec. 34 A)	
	WEDC provided with employment through job placement	P/C/MSWDO, PESO, DOLE
	(MCW-IRR Sec. 34 A)	
<i>Social Welfare - Girl Children</i>	Policies, plans and programs implemented to eliminate all forms of discrimination against girl children	P/C/MSWDO, DILG
	(MCW-IRR Sec. 35 A)	
	Conduct of community consultations on the effect of child marriages on health, education, and over-all situation of the girl-child.	P/C/MPDO, P/C/MSWDO
	(MCW-IRR Sec. 35 A.2)	
	Functional Local Councils for the Protection of Children (LCPC).	P/C/MPDO, P/C/MSWDO
	(MCW-IRR Sec. 35 B.1)	
	Existing indigenous mechanisms for the protection of children adopted by LCPCs	P/C/MPDO, P/C/MSWDO
<i>Social Welfare - Senior Citizens</i>	Gender-responsive, rights-based, and culture sensitive policies, programs and services implemented for senior citizens	P/C/MSWDO, Office for Senior Citizens Affairs (OSCA)
	(MCW-IRR Sec. 36 B)	
	Number of senior citizens provided with continuous support services	P/C/MSWDO, Office for Senior Citizens Affairs (OSCA)
	(MCW-IRR Sec. 36 A)	

SOCIAL SUBSECTOR/S	DATA REQUIREMENTS	DATA SOURCE
	Number and types of support services provided to senior citizens (MCW-IRR Sec. 36 A)	P/C/MSWDO, Office for Senior Citizens Affairs (OSCA)
	OSCAs with programs and services addressing gender-based violence, abuse and/or neglect of women senior citizens (MCW-IRR Sec. 36 F)	P/C/MSWDO, OSCA
	Supportive community resources developed and utilized to provide in-home services, respite care, and stress reduction with high-risk families (MCW-IRR Sec. 36 D)	P/C/MSWDO, OSCA
	Subsidy and support programs provided to family and caregivers to promote quality homecare for senior citizens. (MCW-IRR Sec. 36 D)	P/C/MSWDO, OSCA
	Capability-building programs developed for healthcare and social work professionals on the prevention, detection, and management of psycho-social problems and other geriatric concerns of women senior citizens, specifically on the handling of older person abuse. (MCW-IRR Sec. 36 C)	P/C/MSWDO, P/C/MHO, OSCA
	Number of women and men healthcare and social work professionals trained on the prevention, detection, and management of psycho-social problems and other geriatric concerns of women senior citizens, specifically on the handling of older person abuse (MCW-IRR Sec. 36 C)	P/C/MSWDO, P/C/MHO, OSCA
<i>Gender-based Violence (GBV)/Protection from all forms of violence</i>	Policies, rules and regulations for the implementation of the incremental increase on recruitment and training of women issued: <ul style="list-style-type: none"> • within 6 months from issuance of IRR • after 6 months from issuance of IRR (MCW-IRR Sec. 12 A.3)	Local Sanggunian, LCAT-VAWC, P/C/MPDO, P/C/MSWDO
	Enhanced services, procedure and protocols in providing women victims of gender-related offenses (MCW-IRR Sec. 12 A.4)	LCAT-VAWC, P/C/MSWDO, PNP
	Number of women involved in planning and management of relief operations (MCW-IRR Sec. 12 B.2)	LCAT-VAWC, P/C/MSWDO, P/C/MPDO, PNP
	Policies issued on participation of women in planning and management of relief operations (MCW-IRR Sec. 12 B.2)	LCAT-VAWC, P/C/MSWDO, P/C/MPDO, PNP

SOCIAL SUBSECTOR/S	DATA REQUIREMENTS	DATA SOURCE
	Relief Programs that comply with international standards such as MISIP (Minimum Initial Service Package) and other humanitarian service package for disaster and armed conflict situations (MCW-IRR Sec. 12 B.2)	LCAT-VAWC, P/C/MSWDO, P/C/MHO, P/C/MPDO, PNP
	Documented cases of pregnant women, lactating mothers, women and mothers with dependent children, who are arrested, detained and interned for reasons related to armed conflict (MCW-IRR Sec. 12 B.4)	LCAT-VAWC, P/C/MSWDO, P/C/MHO, P/C/MPDO, PNP, AFP, NGOs, POs
	Reports on psychosocial interventions provided to combatants and non-combatants especially children who suffered from armed conflict. (MCW-IRR Sec. 12 B.6)	P/C/MSWD, NGOs, POs
	Reports/documented cases of women and girls forcibly recruited for armed conflict (MCW-IRR Sec. 12 B.1)	LCAT-VAWC, P/C/MSWDO, PNP, AFP, NGOs, POs
	Cases of women especially indigenous and Moro women forced to abandon their lands, territories and means of subsistence or relocate them in special centers for military purposes (MCW-IRR Sec. 12 B)	LCAT-VAWC, P/C/MSWDO, PNP, AFP, NGOs, POs
	Functional VAW desks (MCW-IRR Sec. 12 D)	LCAT-VAWC, P/C/MSWDO, PNP
	Conduct of VAW desk monitoring and evaluation (MCW-IRR Sec. 12 D)	LCAT-VAWC, P/C/MSWDO, P/C/MPDO
	Incidence and number of violence against women and children, by type (CORE GAD)	LCAT-VAWC, PNP, DSWD, P/C/MSWDO
	Presence of women's desk in police stations	LCAT-VAWC, PNP, GERL
	Presence of adequate lighting in streets and public places to deter crime	P/C/MPDO, Department of Public Works and Highways (DPWH), P/C/Municipal Engineering Office, GERL
	Presence of separate rooms for interrogation of women victims in police stations	PNP, Police Districts, GERL
	Presence of separate detention centers for women	PNP, P/C/MPDO, GERL
	Presence and types of services to prevent domestic violence	P/C/MPDO, P/C/MSWDO, GERL, LCAT-VAWC
	Presence and types of services and mechanisms to prevent human trafficking	P/C/MPDO, P/C/MSWDO, GERL
	Presence of rehabilitation/development/crisis centers for women (includes availability of counseling program, treatment for physical	P/C/MPDO, P/C/MSWDO, GERL

SOCIAL SUBSECTOR/S	DATA REQUIREMENTS	DATA SOURCE
	injuries, temporary shelter, legal services, productivity/livelihood program and job referral system)	
	Presence of a VAW referral system ⁹	P/C/MSWDO, DSWD, LCAT-VAWC, NGOs/POs
	Availability and frequency of trainings conducted on the rights of women to be free from all forms of violence whether physical, sexual, emotional, mental or economic abuse, (latest available at least 2 years)	LCAT-VAWC, P/C/MSWDO, HRMO, PNP, NGOs/POs
	Establishment and maintenance of a comprehensive data and information system on trafficking, exploitation, and prostitution	LCAT-VAWC, PNP, NGOs, POs
	Presence of statistical data generated on the incidence of all kinds of VAW and VAW victims to the total VAW-related data required, (latest available at least 2 years)	LCAT-VAWC, PNP, NSO, NGOs and POs
	Availability of local facilities or offices providing support services such as counseling, temporary shelter and child care for VAW victims, (latest available at least 2 years)	P/C/MSWDO, P/C/MPDO, PNP, NGOs and POs
	Presence of NGO-run shelters and drop-in centers for the rehabilitation of prostituted and exploited women and girls, (latest available at least 2 years)	NGOs/POs P/C/MSWDO
	Percentage of women who are aware of VAW (all forms, including domestic violence, marital rape and incest) to total women (interviewed), (latest available at least 2 years)	LCAT-VAWC, LGU Public Information Office, NGOs/POs , P/C/MSWDO
	Presence and implementation of programs reintegrating prostituted women into society	LCAT-VAWC, P/C/MSWDO, LGU Public Information Office, NGOs/POs
	Number of VAW victims provided with legal aid to total number of VAW victims, (latest available at least 2 years)	LCAT-VAWC, P/C/MSWDO, PAO, NGOs/POs
	Number of reported VAWC cases, (latest available at least 2 years)	LCAT-VAWC, P/C/MSWDO, DSWD, PNP, NGOs/POs
	Number of VAWC cases served, 2 reference years	LCAT-VAWC, P/C/MSWDO, DSWD, PNP, NGOs/POs
	Number of cases filed against traffickers and exploiters of prostituted women, (latest available at least 2 years)	LCAT-VAWC, P/C/MSWDO, DSWD, PNP, NGOs/POs
	Number of convictions against traffickers and exploiters of prostituted women, (latest available at least 2 years)	LCAT-VAWC, PNP, NGOs/POs, P/C/MSWDO
	Number of political detainees/executions/other human rights violations, by sex and age group, (latest available at least 2 years)	PNP, DSWD, PAO, NGOs/POs
	Number of women victims of VAW, exploitation and trafficking provided with rehabilitation, social integration and economic empowerment program and other support services, to total number of reported victims, (latest available at least 2 years)	LCAT-VAWC, PNP, DSWD, NGOs/POs , P/C/MSWDO
Media and Film	Local Media Board (LMB) to monitor the	Sangguniang

SOCIAL SUBSECTOR/S	DATA REQUIREMENTS	DATA SOURCE
	<p>implementation of the MCW and its IRR on the non-discriminatory and non-derogatory portrayal of women in media and film.</p> <p>(MCW-IRR Sec. 19 E)</p>	<p>Panlalawigan/Panglungsod/Bayan, P/C/MPDO</p>
	<p>Percent of radio advertisements which promote sexist, stereotyped and demeaning roles of women</p> <p>(CORE GAD)</p>	<p>LGU Public Information Office, local AM/FM radio stations</p>
	<p>Percent of TV advertisements which portray sexist, stereotyped and demeaning roles of women</p>	<p>LGU Public Information Office, local TV stations</p>
	<p>Percent of print advertisements which portray sexist, stereotyped and demeaning roles of women</p>	<p>LGU Public Information Office</p>
	<p>Number of media workers who are capacitated on GAD</p>	<p>LGU Public Information Office</p>
	<p>Number of "success stories" of female entrepreneurs published through media, over total number of local publications, (latest available at least 2 years)</p>	<p>LGU Public Information Office, NGOs/POs</p>
<i>Marriage and Family Relations</i>	<p>Standards and gender-fair modules developed (on marriage, family relations, parent effectiveness, shared parenting and household responsibilities and non-sexist child rearing)</p> <p>(MCW-IRR Sec. 22 A)</p>	<p>HRMO, P/C/MSWDO, Local Population Office, LGU GFPS</p>
	<p>Standards and gender fair modules on marriage, family relations, parent effectiveness, shared parenting and household responsibilities and non-sexist child rearing adopted .</p> <p>(MCW-IRR Sec. 22 A)</p>	<p>P/C/MSWDO, Local Population Office, LGU GFPS</p>
	<p>Conduct of gender-sensitive pre-marriage counselling program to promote family planning, responsible parenthood, equal relations and shared responsibility between spouses in parenting and household management.</p> <p>(MCW-IRR Sec. 22 B.2)</p>	<p>P/C/MSWDO, Local Population Office, P/C/MHO</p>
	<p>Provision of trainings and seminars to barangays on the education and popularization of the MCW and the Family Code, especially on the obligation and responsibilities of spouses to eliminate gender bias.</p> <p>(MCW-IRR Sec. 22 B.5)</p>	<p>P/C/MSWDO, Local Population Office, LGU GFPS</p>
<i>Protection and security in times of disaster, calamities and other crisis situations</i>	<p>Gender responsive disaster risk reduction (DRR) policies (including guidelines)and programs implemented</p> <p>(MCW-IRR Sec. 13)</p>	<p>P/C/MPDO, LDRRMC, NGOs, POs</p>
	<p>Gender-responsive and rights-based work</p>	<p>P/C/MPDO, LDRRMC, NGOs,</p>

SOCIAL SUBSECTOR/S	DATA REQUIREMENTS	DATA SOURCE
	and financial plan on disasters, calamities and other crises in all phases of relief, recovery, rehabilitation and reconstruction (MCW-IRR Sec. 13 B)	POs
	Number and type of measures adopted by camp managers to prevent sexual violence in evacuation centers and relocation sites (MCW-IRR Sec. 13 B.4)	LDRRMC, P/C/MPDO, P/C/MSWDO, NGOs, POs
	Functional disaster coordinating councils at the regional and local level (MCW-IRR Sec. 13 A)	LDRRMC, P/C/MPDO, P/C/MSWDO, NGOs, POs
	Number of women involved in the development of a gender-responsive disaster management, including preparedness, mitigation, risk reduction and adaptation (local) (MCW-IRR Sec. 13 A)	LDRRMC, P/C/MPDO, P/C/MSWDO, NGOs, POs
	Presence of sex and age disaggregated data and reproductive health indicators (MCW-IRR Sec. 13 A.2)	P/C/MPDO, CBMS, LGPMS, NHTS-PR
	Number of women beneficiaries provided with basic services such as food, water, sanitary packs, psychosocial support, livelihood, and education (MCW-IRR Sec. 13 B.3)	LDRRMC, P/C/MSWDO, P/C/MPDO, NGOs, POs
	Number of women beneficiaries (by reproductive health condition) in disaster stricken areas receiving MISIP for sexual reproductive health at early stages of crisis (MCW-IRR Sec. 13 B.3)	LDRRMC, P/C/MSWDO, P/C/MPDO, NGOs, POs
	Women members of various evacuation centers/camps committees organized for food and water distribution, nutrition, sanitation and hygiene, shelter, health, education, protection and security and safety especially in decision-making (MCW-IRR Sec. 13 B.4)	LDRRMC, P/C/MSWDO, P/C/MPDO, NGOs, POs
<i>Sports</i>	Partnerships formed with community-based sports organizations to ensure equal participation of women in sports. (MCW-IRR Section 17 F.8)	Office of the Local Chief Executive, Office of the Congressperson, HRMO, P/C/MPDO, Sangguniang Kabataan (SK), DepEd, CHED, Philippine Sports Commission, local sports organizations/teams
	Programs developed in coordination with sports organization to increase participation of elderly women, women with disabilities, and indigenous women (MCW-IRR Section 17 F.9)	Office of the Local Chief Executive, Office of the Congressperson, HRMO, P/C/MPDO, SK, DepEd, CHED, Philippine Sports Commission (PSC)

SOCIAL SUBSECTOR/S	DATA REQUIREMENTS	DATA SOURCE
	Elderly women, women with disabilities, and indigenous women participating in sports programs (MCW-IRR Section 17 F.9)	Office of the Local Chief Executive, P/C/MPDO, Office of the Congressperson, SK, Barangays
<i>Social Protection</i>	Social protection policies, programs and services implemented for women and other marginalized sectors (MCW-IRR Sec. 30)	P/C/MPDO, P/C/MSWDO, PESO
	Indigenous and community-based social protection policies and programs developed and/or enhanced (MCW-IRR Sec. 30)	P/C/MPDO, P/C/MSWDO, PESO
	Social protection policies and programs reviewed and enhanced to ensure benefit packages are responsive and the premiums are affordable (MCW-IRR Sec. 30)	P/C/MPDO, P/C/MSWDO, PESO, local SSS, HMDF and PHIC
	Poverty reduction programs and services mainstreamed with social protection (including Occupational Safety and Health, Disaster Risk Reduction Management) at the local level (MCW-IRR Sec. 30 B.3)	P/C/MPDO, P/C/MSWDO, PESO, P/C/MENRO
	Labor market programs sustained to create employment and alternative livelihood following decent work standards (MCW-IRR Sec. 30 B.4)	P/C/MPDO, P/C/MSWDO, PESO, local DOLE and DTI offices
	Health insurance program for senior citizens and indigents developed (MCW-IRR Sec. 30 D)	P/C/MPDO, P/C/MSWDO, local PHIC office
	Senior citizens and indigents who have availed of insurance programs (total senior citizens and registered) (MCW-IRR Sec. 30 D)	P/C/MPDO, P/C/MSWDO, local PHIC office
	Community-based social protection schemes and programs developed for women with disabilities (MCW-IRR Sec. 30 E)	P/C/MPDO, P/C/MSWDO, PESO local PHIC, SSS, GSIS and DOLE offices
	Women with disabilities that availed of community-based social protection schemes and programs MCW-IRR Sec. 30 E)	P/C/MPDO, P/C/MSWDO, PESO local PHIC, SSS, GSIS and DOLE offices

II. ECONOMIC DEVELOPMENT SECTOR

ECONOMIC SUBSECTOR/S	DATA REQUIREMENTS	DATA SOURCE
<i>Income and Poverty</i>	Proportion of population with incomes below poverty line (MDGs)	LGPMS, CBMS, P/C/MSWDO, NSO
	Proportion of households whose members eat less than 3 full meals a day, 2 reference years	CBMS, P/C/MSWDO, P/C/MHO ,NSO
	Percentage of households with one main source of income only to total number of households	CBMS, NSO
	Percentage of households with secondary/tertiary source of income	CBMS, NSO
<i>Labor and Employment</i>	Investment-friendly policies, systems, programs, procedures and technical assistance for returning women migrant workers (MCW-IRR Sec. 25 C)	LEIPO, P/C/MPDO, PESO, local DTI
	Livelihood and skills development training, seminars, and scholarship grants for women migrant workers (MCW-IRR Sec. 25 D)	PESO, P/C/MSWDO
	Skills training, counseling and other support services integrated with entrepreneurship and GAD (MCW-IRR Sec. 25 D)	PESO, P/C/MSWDO, P/C/MAO
	Share of women in non-agricultural wage employment (MDGs)	LGPMS, NSO, DOLE, Department of Agriculture-Bureau of Agricultural Statistics (DA-BAS)
	Percent of labor force employed, by sex, by age group, (latest available at least 2 years)	LGPMS, CBMS, DOLE, NSO, MDGs, LPDO
	Average family income of household head, by sex, (latest available at least 2 years) (CORE GAD)	LGPMS, NSO, NSCB ,CBMS
	Average time spent doing household chores by employed men and women (CORE GAD)	CBMS, NSO, NSCB
	Number of livelihood training programs for women	P/C/MSWDO, P/C/MAO, DOLE, TESDA, GERL,
	Presence of Day Care Center Percentage of Barangays with Day Care Centers +	P/C/MSWDO, GERL
	Number/percentage of LGU constituents with access to livelihood training programs of the LGU, by sex	P/C/MSWDO, P/C/MAO, DOLE
	Proportion of persons 15 years old and above who are not working but actively seeking work, by sex	NSO, DOLE field offices , PESO
	Proportion of children below 15 years old who are employed to the total members of employed persons, by sex	CBMS, LGPMS, PESO, P/C/MSWDO, DOLE, DTI field offices, NGOs/POs
	Availability of in-service/employment trainings with legal literacy training and awareness-raising for women in the labor force, focusing on their rights as employees,	PESO, C/MSWDO, DOLE, DTI field offices

ECONOMIC SUBSECTOR/S	DATA REQUIREMENTS	DATA SOURCE
	over total in-service trainings conducted, (latest available at least 2 years)	
	Number of trainings on marketing, export development and joint venture promotion to female entrepreneurs and relevant associations, over total number of trainings conducted, (latest available at least 2 years)	PESO, C/MSWDO, DOLE, DTI field offices
	Employment contribution in percent of total employment, by sex	NSO, National Statistics Coordination Board (NSCB), DOLE field offices, CBMS, LGPMS
	Percentage of women employed to total employment, (latest available at least 2 years)	NSO, NSCB, DOLE field offices, CBMS, LGPMS
<i>Agriculture Land Utilization</i>	Comprehensive Development and Management Plans (CDMP) and Industrial Forest Management Agreement (IFMA) integrated with gender concerns (MCW-IRR Sec. 23 B 3.c)	P/C/MPDO, P/C/MAO, P/C/MENRO, LGU-GFPS
	Policy and guidelines developed to ensure membership of marginalized women in councils for sustainable development created pursuant to existing laws (MCW-IRR Sec. 23 B 12.b)	P/C/MPDO, P/C/MAO
	Provision of access and links of production areas to markets (MCW-IRR Sec. 23 B. 14.a)	P/C/MPDO, P/C/MAO
	Farm to market roads constructed in rural areas to ensure access and links to markets (MCW-IRR Sec. 23 B. 14.a)	P/C/MPDO, P/C/MAO
	Number of farmers with access to agricultural credit, by sex, by service provider, (latest available at least 2 years)	DA, DAR, P/C/MAO, FGDs, NGOs/POs
	Percentage of women enjoying equal treatment in land and agrarian reform, (latest available at least 2 years)	DA, DAR, P/C/MAO, FGDs, NGOs/POs
	<i>Food Self-sufficiency</i>	Gender-responsive PPAs on food security and sustainable use of productive resources developed and/or implemented (MCW-IRR Sec. 23)
LGU programs and projects on food security and sustainable use of productive resources enhanced to become gender responsive (MCW-IRR Sec. 23)		P/C/MAO, Provincial DA, NGOs/POs, LGPMS, BFAR
Rural women's groups participating in the implementation of DA programs at the local level (e.g. food production, processing and marketing programs) (MCW-IRR Sec. 23)		P/C/MAO
Appropriate training programs for food security to strengthen women's capacities implemented		P/C/MAO, P/C/MPDO, NGOs/POs

ECONOMIC SUBSECTOR/S	DATA REQUIREMENTS	DATA SOURCE
	(MCW-IRR Sec. 23 A 1.c)	
	Policy guidelines recognizing women as farmers and fisher folk and giving them equal opportunities to participate in programs and projects	P/C/MAO, NGOs, POs
	(MCW-IRR Sec. 23)	
	Number of women who have availed of training programs for food security	P/C/MAO, NGOs, POs
	(MCW-IRR Sec. 23 A 1.c)	
	Rural women’s groups participating in policy and program formulation, planning and designing of DA programs at the local level	P/C/MAO, NGOs, POs
	(MCW-IRR Sec. 23)	
	Girl-children and women benefiting from all DA programs	P/C/MAO, NGOs, POs
	(MCW-IRR Sec. 23)	
	Promotion of the use of organic fertilizer in food production	P/C/MAO, NGOs, POs
	(MCW-IRR Sec. 23 A. 1. e)	
	Presence of a community-based food security plan in the CDP that respects religious and cultural practices	P/C/MAO, NGOs, POs
	(MCW-IRR Sec. 23)	
	Guidelines ensuring food safety by strengthening food management	P/C/MAO, NGOs, POs
	(MCW-IRR Sec. 23 A.2)	
	Provision of timely and accurate information on food safety such as, but not limited to, labeling and traceability	P/C/MAO, NGOs, POs
	(MCW-IRR Sec. 23 A.2)	
	Provision of IECs on the use of alternative or renewable energy in food production	P/C/MAO, NGOs, POs
	(MCW-IRR Sec. 23 A.3)	
	Availability of rainwater harvesting facilities as well as programs on rehabilitation of watershed areas for small women farmers	P/C/MAO, NGOs, POs
	(MCW-IRR Sec. 23 B. 5.c)	
	Policy and guidelines developed to ensure participation of rural women in the training on food production	P/C/MAO, NGOs, POs
	(MCW-IRR Sec. 23 B 9.g)	
	Rural women participating in trainings on food production (MCW-IRR Sec. 23 B 9.g)	P/C/MAO, NGOs, POs
Fishery	Equal access to men and women on the use and management of fisheries and aquatic	P/C/MAO, BFAR or NFARMC as applicable

ECONOMIC SUBSECTOR/S	DATA REQUIREMENTS	DATA SOURCE
	resources, and all the rights and benefits accruing to stakeholders in the fishery industry (MCW-IRR Sec. 23 B. 6)	
	Standard registration form for municipal fisherfolks, fishing vessels and gears (MCW-IRR Sec. 23 B. 6.a)	P/C/MAO, BFAR or NFARMC as applicable
	Maintenance of an updated database of women fisherfolks (MCW-IRR Sec. 23 B 6.b)	P/C/MAO
	Women fisherfolks accorded with benefits and privileges under the Labor Code, Social Security System (SSS) and other laws (MCW-IRR Sec. 23 B 6.c)	P/C/MAO
	Policy guidelines ensuring full participation of women in the planning, designing, implementation and monitoring and evaluation of coastal resource management programs and designate coastal areas to be managed by women (MCW-IRR Sec. 23 B. 7)	P/C/MAO
	Women who are functioning as fish wardens deputized (within 6 months from IRR) (MCW-IRR Sec. 23 B. 8.a)	P/C/MAO
	Women recognized as effective fish wardens (MCW-IRR Sec. 23 B. 8.b)	P/C/MAO
	Capacity development training for women fish wardens (MCW-IRR Sec. 23 B. 8.c)	P/C/MAO
	Social and legal protection for all deputized women fish wardens (MCW-IRR Sec. 23 B. 8.d)	P/C/MAO
Forestry	Women who participated in the management of protected areas (MCW-IRR Sec. 23 B 5.a)	P/C/MENRO
	Marine and terrestrial protected areas managed by women (MCW-IRR Sec. 23 B. 5)	P/C/MENRO
	Community-managed ecotourism projects participated in by women stakeholders (MCW-IRR Sec. 23 B. 5.b)	P/C/MENRO
Industry	Credit programs accessible to women	P/C/MSWDO, P/C/MAO, DTI, local GFIs, NGOs/POs, (GERL)
	Number of women who own business enterprises	P/C/MSWDO, P/C/MAO, DTI, NGOs/POs, GERL

ECONOMIC SUBSECTOR/S	DATA REQUIREMENTS	DATA SOURCE
	Increased number of women in viable micro-enterprises, (latest available at least 2 years)	P/C/MSWDO, P/C/MAO, NGOs/POs
	Average monthly income of women in micro-enterprises, (latest available at least 2 years)	P/C/MSWDO, P/C/MAO, NGOs/POs
	Number of women reporting access to information on potential, high-value products, market linkage, product development and technology support	P/C/MAO, DTI, DOST, DOLE
	Number of women reporting access to assistance in product design, (latest available at least 2 years)	DTI, NGOs/POs ,DOST
	Number of enterprises that adopt environment-friendly production technologies and practices	P/C/MAO, DOLE, DENR
	Number of enterprises that adopt non-discriminatory hiring and work practices	PESO, DOLE
	Number of women who reported greater control over productive resources and benefits from wealth-creating activities, (latest available at least 2 years)	FGDs, NGOs/POs
	Number of women who reported greater control over the business environment, (latest available at least 2 years)	FGDs, NGOs/POs
	Number of women who reported enhanced capacity to negotiate for better business and work conditions, (latest available at least 2 years)	FGDs, NGOs/POs
	Number of women availing of services to improve micro-enterprises, (latest available at least 2 years)	FGDs, NGOs/POs
	Number of women who reported improved level of satisfaction with programs and services accessed relative to micro-enterprises, (latest available at least 2 years)	FGDs, NGOs/POs
	Number of work establishments with support services, such as child-free facilities, to total number of establishments, (latest available at least 2 years)	PESO, DOLE, P/C/MPDO
	Number of work establishments without occupational segregation, to total number of work establishments, (latest available at least 2 years)	PESO, DOLE, P/C/MPDO
	Total number of commercial establishments, in establishment equivalent Unit, (latest available at least 2 years)	Office of the Local Chief Executive, Business Permit and Licensing Office (BPLO)

III. INFRASTRUCTURE SECTOR

INFRASTRUCTURE SUB-SECTORS	DATA REQUIREMENTS	DATA SOURCE
<i>Utilities (Water)</i>	Millennium Development Goal (MDG) Target: Increase the proportion of population with access to potable water (level I&II) from 82.9 percent in 2007 to 86.6 percent in 2016 (Accelerating Infrastructure Development, Results Matrices, PDP 2011-2016)	P/C/MPDO, CBMS, Water and Sanitation (WATSAN) Councils, Barangay Water and Sanitation (BAWASA) teams, Local Water Utilities Administration (LWUA), local water districts and private operators
	MDG Target: Eliminate the number of waterless areas from 498 in 2011 to 0 in 2016 (PDP, Infrastructure Result Matrices)	P/C/MPDO, CBMS, WATSAN Councils, BAWASA teams, LWUA, local water districts and private operators
	Increased water and sanitation (WATSAN) facilities to schoolchildren ratio <ul style="list-style-type: none"> • Primary, from 1:58.18 in 2010 to 1:50 in 2016 • Secondary, from 1:103.26 in 2010 to 1:50 in 2016 (Social Infrastructure, Results Matrices, PDP 2011-2016)	P/C/MPDO, CBMS, Water and Sanitation (WATSAN) Councils, Barangay Water and Sanitation (BAWASA) teams, LWUA, local water districts and private operators
<i>Roads and Bridges</i>	Kilometer of road per 1000 population (please disaggregate by sex)	P/C/Municipal Engineering Office, DPWH
<i>Flood Drainage and Management</i>	Decrease in percentage of loss of lives (by sex) over total affected population (by sex) due to flooding events (annual) (PDP, Infrastructure Results Matrices, PDP 2011-2016)	P/C/Municipal Engineering Office, CBMS, LGPMS, P/C/MSWDO, LDRRMC
	Decrease areas vulnerable to flood (in hectares)	P/C/Municipal Engineering Office, CBMS, LGPMS
<i>Irrigation</i>	Number of small women farmers with access to irrigation and rainwater harvesting facilities as well as programs on rehabilitation of watershed areas (MCW-IRR Sec. 23 B. 4.c)	P/C/MAO, P/C/MENRO, P/C/Municipal Engineering Office
<i>Public Safety</i>	Number of police outposts/1000 population	PNP, local police districts
	Number of prisoners/detention cell/ 1,000 population (please disaggregate by sex)	P/C/Municipal Jails
	Availability of separate toilets for men and women in LGU-managed /owned facilities or places (e.g. market, public offices, parks, etc.)	P/C/Municipal Engineering Office, GERL, P/C/MPDO
	Adequacy of lighting of streets and public places to deter crime	P/C/Municipal Administrator's Office, P/C/Municipal Engineering Office, GERL, P/C/MPDO
<i>Open Space</i>	Total area of public open space per 1000 inhabitants, by sex	P/C/Municipal Engineering Office, land use maps, P/C/MPDO

INFRASTRUCTURE SUB-SECTORS	DATA REQUIREMENTS	DATA SOURCE
	Total office floor per municipal employee, by sex	P/C/Municipal Engineering Office, P/C/MPDO
<i>Social Support</i>	Number of hospital beds per 1000 population, by sex	P/C/MHO, DOH, LPDO
	Increased percentage of households provided with housing units from 10 percent in 2010 to 30 percent in 2016 (Social Infrastructure, Results Matrices, PDP 2011-2016, by sex of household head)	Local Housing Boards, HMDF, NHA, other applicable shelter agencies
	Availability of a multi-purpose hall that can be accessed/used by women	P/C/MPDO, GERL
	Increased classroom to pupil ratio <ul style="list-style-type: none"> • Primary, from 1:38.95 in 2010 to 1:30 in 2016 • Secondary, from 1:53.63 in 2010 to 1:45 in 2016 (Social Infrastructure, Results Matrices, PDP 2011-2016)	DepEd's BEIS
	Classroom-to-pupil ratio in elementary and secondary schools	DepEd's BEIS

IV. ENVIRONMENT SECTOR

ENVIRONMENT SUBSECTORS	DATA REQUIREMENTS	DATA SOURCE
<i>Resource Base and Land Use</i>	Number of women who have participated in the management of protected areas (MCW-IRR Sec. 23, B. 5a)	P/C/MENRO, P/C/MAO, LGPMS, NGOs/POs
	Number of marine and terrestrial protected areas (PAs) managed by women (MCW-IRR Sec. 23 B 5.a)	P/C/MENRO, P/C/MAO, LGPMS, NGOs/POs
	Number of community-managed ecotourism projects participated in by women stakeholders? (MCW-IRR Sec. 23 B 5.b)	P/C/MAO, P/C/MENRO, LGPMS, NGOs/POs
	Ratio of population to certified A&D areas (in persons/hectare), sex-disaggregated	P/C/MENRO, LGPMS, NGOs/POs, NCIP
	Share of number of household/family over protected area (in hectare/household/per sex of household head)	NSO, LGPMS, CBMS, NHTS, P/C/MENRO
	Percentage of respondents who are aware of their rights to ancestral domains and lands, by sex <ul style="list-style-type: none"> • ¹⁰Right of ownership • Right in case of displacement • Right to regulate entry of migrants • Right to develop lands and natural resources • Right to safe and clean water • Right to claim parts of reservations 	NSCB, DAR, DA, P/C/MAO

ENVIRONMENT SUBSECTORS	DATA REQUIREMENTS	DATA SOURCE
	<ul style="list-style-type: none"> Right to resolve conflict 	
	Percentage of respondents who experienced violations of rights to ancestral domains and lands, by sex <ul style="list-style-type: none"> Not experienced violations Experienced violations <ol style="list-style-type: none"> encroachment pollution illegal entry displacement/relocation others 	NSCB, DAR, DA, P/C/MAO
<i>Tenure Management</i>	Comprehensive development and management plans (CDMP) and industrial forest management agreements (IFMA) integrated with gender concerns (MCW Sec.23 B.3c)	P/C/MPDO, LGU GFPS , P/C/MENRO
	Number of women beneficiaries of community-based forest management programs (CBFM)	P/C/MENRO, LGPMS, NGOs/POs
	Area covered by leases and permits per lessee, by sex	P/C/Municipal Assessor's Office, Bureau of Local Government Finance (BLGF)
	Area covered by CBFM as percent of total forest area	P/C/MENRO, LGPMS, NGOs/POs
	Area covered by community forest stewardship agreements as percent of total forest area	P/C/MENRO, LGPMS, NGOs/POs
<i>Land Use and Land Productivity</i>	Number of women and men who participated in the development of land use plans and implementation of zoning ordinances (MCW Sec. 24, A.8)	P/C/MPDO, Local Sanggunian, LGU GFPS
	Increased number of beneficiaries with secured land tenure in agricultural and residential lands (by sex of beneficiary) (Conservation, Protection and Rehabilitation of Environment and Natural Resources; Results Matrices, 2011-2016)	P/C/MAO, P/C/MENRO, DAR, P/C/MPDO, NGOs/POs
	Cropland per agricultural worker, by sex (ha)	P/C/MAO, NSO, NGOs/POs, LGPMS, CBMS
	Agricultural workers, by sex per tractor (in %)	P/C/MAO, NSO, NGOs/POs, LGPMS, CBMS
	Agricultural workers, by sex per harvester/thresher (in %)	P/C/MAO, NSO, NGOs/POs, LGPMS, CBMS
	% of total land area occupied by squatters, by sex	P/C/MPDO, NSO, LGPMS, CBMS
<i>Fertilizer and Pesticides Use</i>	Promotion of the use of organic fertilizer in food production (MCW Sec. 23, B. 9 g)	P/C/MAO, LGPMS, CBMS, DA, BFAR
<i>Solid Waste Management</i>	Eliminated proportion of the population which practice open defecation from 8 percent in 2009 to 0 percent in 2016 (Sanitation, Sewerage, Septage; Results Matrices, PDP 2011-2016)	LGPMS, CBMS, Local Solid Waste Management Councils, NGOs/POs
	MDG Target: Increased percentage of	LGPMS, CBMS, Local Solid

ENVIRONMENT SUBSECTORS	DATA REQUIREMENTS	DATA SOURCE
	<p>population with access to basic sanitation (i.e., sanitary toilets) from 76 percent in 2008 to 83.8 percent in 2016</p> <p>(Sanitation, Sewerage, Septage; Results Matrices, PDP 2011-2016)</p>	<p>Waste Management Councils, P/C/MPDO, NGOs/POs</p>
	<p>Increased percentage of households in Highly Urbanized Cities (HUCs) connected to sewerage system (% of HH)</p> <p>(Sanitation, Sewerage, Septage; Results Matrices, PDP 2011-2016)</p>	<p>LGPMS, CBMS, Local Solid Waste Management Councils, P/C/MPDO, NGOs/POs</p>
	<p>Increased percentage of households covered by septage management systems (% of HH)</p> <p>(Sanitation, Sewerage, Septage; Results Matrices, PDP 2011-2016)</p>	<p>LGPMS, CBMS, Local Solid Waste Management Councils, P/C/MPDO, NGOs/POs</p>
	<p>Increased percentage of total LGUs served by sanitary landfill from 2.7 percent in 2010 to 7.76 percent in 2016</p> <p>(Social Infrastructure, Results Matrices, PDP 2011-2016)</p>	<p>Local Solid Waste Management Councils, P/C/MPDO, Materials Recovery Facility (MRF), NGOs/POs,</p>
<i>Water Quality</i>	<p>Improved water quality of priority river systems under the Sagip Ilog Program and other priority bodies of water including Manila Bay and Pasig River (by BOD water criteria: Class C \leq 7mg/L; Class D $>$ 7mg/L & \geq 10mg/L) Major source of water pollution: domestic wastes = 48%</p> <p>(Conservation, Protection and Rehabilitation of Environment and Natural Resources, Results Matrices, PDP 2011-2016)</p>	<p>Pasig River Rehabilitation Commission (PRRC), DENR, P/C/MENRO, NGOs/POs</p>
	<p>Sustained BOD level of other priority rivers that are already within the water quality criteria (in mg/L) Sustained BOD level of Laguna Lake within standard (in mg/L)</p> <p>(Conservation, Protection and Rehabilitation of Environment and Natural Resources, Results Matrices, PDP 2011-2016)</p>	<p>Laguna Lake Development Authority (LLDA), DENR, P/C/MENRO, NGOs/POs</p>

V. INSTITUTIONAL SECTOR

INSTITUTIONAL SUBSECTORS	DATA REQUIREMENTS	DATA SOURCE
Local Fiscal Management - Revenue Performance	Total revenue per capita, (latest available at least 2 years)	P/C/Municipal Assessor's Office, Local Treasurer's Office, LFC, BLGF
	Total revenue collected as percent of annual collection target, 2 reference years	P/C/Municipal Assessor's Office, Local Treasurer's Office, LFC
	Cost collection ratio	P/C/Municipal Assessor's Office, Local Treasurer's Office, LFC
	Self-reliance index, 2 reference years (average last 3 years)	LFC
	Proportion of delinquencies to total real property tax collected, 2 reference years	P/C/Municipal Assessor's Office, BLGF, Local Treasurer's Office
	Ratio of proceeds from special levies to total revenues, 2 reference years in previous and present administrations	P/C/Municipal Assessor's Office, BLGF
	Ratio of financial grants or donations to total LGU income, 2 reference years in previous and present administrations	Local Treasure's Office, Local Budget Office, LFC
Expenditure	Total public expenditure on capital outlay per capita, 2 reference years	LFC, Local Treasurer's Office, Local Assessor's Office
	Ratio of municipal government employees to total no. of local taxpayers; by sex	LFC, HRMO, NSO, Local Treasurer's Office
Real Property Tax	Number of big taxpayers who account for 80% of tax revenues, by sex	NSO, BIR, BLGF
	Proportion of delinquent real property taxpayers to total listed taxpayers, by sex	P/C/Municipal Assessor's Office, Local Treasurer's Office
	Proportion of receipts from municipal enterprises to total local revenues, by type of enterprise (to reflect women-owned/led micro-enterprises)	P/C/Municipal Assessor's Office, Local Treasurer's Office, LFC, BLGF
Capacity Development	LGUs conducting capacity building programs to strengthen women's qualifications and performance to compete for third level positions (MCW-IRR Sec. 14 A)	HRMO, P/C/MPDO, Local Sanggunian, Office of the LCE
	Number of LGUs with trained officials and staff (by region, by type of training) on mandatory training on gender and human rights (MCW-IRR Sec. 12 C.)	P/C/MPDO, Local Sanggunian, HRMO, Office of the LCE
	Government personnel, including appointing authorities, LCEs and those in executive managerial positions trained on gender and human rights, particularly on the cycle of continuum of violence, counseling and trauma healing (MCW-IRR Sec. 12 C)	P/C/MPDO, Local Sanggunian, HRMO, Office of the LCE
	Number of trainings that include topics on women's self-confidence, advocacy and negotiation skills, over total number of trainings conducted	LGU GFPS, HRMO
	Number of trainings that include topics on women's self-confidence, advocacy and negotiation skills, over total number of	LGU GFPS, HRMO

INSTITUTIONAL SUBSECTORS	DATA REQUIREMENTS	DATA SOURCE
	trainings conducted	
	Number of trainings conducted in places where women gather (e.g. markets) over total number of trainings conducted, 2 years	HRMO, Office of the LCE, P/C/MSWDO
	Number of programs implemented to improve the productivity of women, 2 years	HRMO, P/C/MPDO
	Accessibility of LGU-sponsored or conducted training programs for women constituents in the past 3 years	HRMO, Office of the LCE, P/C/MSWDO, LGU GFPS
	Number of training programs using information and communication technology (including television, interactive video-conferencing and satellite transmissions), to deliver courses to large number of women in both urban and rural locations, over total number of trainings, 2 years	LGU Public Information Office, LGU MIS Office , HRMO
	Number of trainings that integrate positive role concepts about women in its programs, 2 years	HRMO
	Number of legal literacy trainings for women conducted, 2 years	HRMO, PAO
	Number of trainings and orientations on Sexual Harassment Law and Domestic Violence conducted, 2 years	HRMO, LCAT-VAWC
	Number of trainings and workshops conducted on the promotion and protection of women's human rights, economic rights and gender sensitivity, 2 years	HRMO, P/C/MPDO
	Number of gender-sensitive trainings for LGU officials, NGOs and the private sector, over total number of trainings conducted, 2 years	HRMO
	Number of trainings conducted and/or awareness raising campaigns on the importance of women's full and equal participation in leadership positions, 2 years	HRMO
	Number of decision-makers and implementers who attended Gender Sensitivity Trainings or orientations, 2 years	HRMO
	Number of trainings or orientations conducted on awareness-raising on gender concerns and public sector unionism for government officials and employees, 2 years	HRMO
	Number of GAD-related activities conducted (such as gender sensitivity training, gender analysis, gender-responsive planning, GAD budgeting, gender mainstreaming, and continuous GAD capability-building, awareness-raising on GAD issues and concerns, and other GAD-related and sector-specific training), 2 years	HRMO
	Presence of partnerships for capacity development on GAD, 2 years	HRMO
<i>Participation</i>	Percentage of women representation in LDCs and local special bodies	
	(MCW-IRR Sec. 14 B) Percentage of women members in the	P/C/MAO

INSTITUTIONAL SUBSECTORS	DATA REQUIREMENTS	DATA SOURCE
	Presidential Agrarian Reform Council (PARC) and its local counterparts like the Provincial Agrarian Reform Coordinating Committee (PARCCOM) and Barangay Agrarian Reform Committee (BARC) (MCW-IRR Sec. 28 A.1)	
	Percentage of women members in community-based resource management bodies or mechanisms on forest management stewardship (MCW-IRR Sec. 28 A.2)	P/C/MAO
	Percentage of women members in the National Agriculture and Fishery Council (NAFC) and its regional and local counterparts (MCW-IRR Sec. 28 A.4)	P/C/MAO
	Capability-building and leadership formation programs as well as affirmative action measures implemented to enable grassroots to women leaders to effectively participate in the decision and policy-making bodies in the respective sectors (MCW-IRR Sec. 28 A)	P/C/MAO
	Number and type of capability building, leadership formation programs and affirmative action measures developed to enable grassroots women leaders to effectively participate in the decision and policy-making bodies in their respective sectors (MCW-IRR Sec. 28 A)	P/C/MAO
	Percentage of women in the Local Housing Boards (MCW-IRR Sec. 28 A.7)	P/C/MPDO, LGU GFPS
	Percentage of women representation in LDCs and local special bodies (MCW-IRR Sec.14 B 1-2)	
	Proportion of women-members in political parties	Office of the LCE, COMELEC, Sangguniang Panlalawigan/Panglungsod/Bayan
	Percent of women candidates and share in national and local elective positions (CORE GAD)	COMELEC
	Ratio of LDC-member non-government organizations and people's organizations per capita, past and present administrations	P/C/MPDO
	Ratio of non-LDC member NGOs and POs to total civil society organizations operating in the locality	P/C/MPDO
	Presence of local government-assigned desks or other support mechanisms for NGOs or	P/C/MPDO

INSTITUTIONAL SUBSECTORS	DATA REQUIREMENTS	DATA SOURCE
	POs or private sector concerned	
	Presence of feedback mechanism to generate citizens' views on the reach and quality of services and development thrusts	P/C/MPDO
	Leadership and membership in labor unions, cooperatives and peasant organizations, by sex	DOLE, CSC, P/C/M/PDO, NGOs/POs
	Percentage of women registered voters to total voters, 2 elections	COMELEC
	Percentage of women who voted to total number of actual voters, 2 elections	COMELEC
	Percentage of women candidates to total number of candidates, 2 elections	COMELEC
	Percentage of women candidates who won to total number of elected local officials, 2 elections	COMELEC
Organization and Management	Conduct of capacity building programs to strengthen women's qualifications and performance to compete for third level positions (MCW-IRR Sec. 14 A)	HRMO, LGU GFPS, Office of the LCE, Sangguniang Panlalawigan/Panglungsod/Bayan
	Percent of women's share in managerial/supervisory positions (CORE GAD)	HRMO, Office of the LCE, LGPMS
	Percent of women's share in technical positions (CORE GAD)	HRMO, LGPMS
	Millennium Challenge Corporation (MCC) eligibility maintained with above the median performance scorecard in the 3 policy categories: Ruling Justly, Economic Freedom and Investing in People (Good Governance and the Rule of Law, Results Matrices, PDP 2011-2016)	HRMO, Office of the LCE, P/C/MPDO, DILG
	Incidence of absentee Local Chief Executives (LCEs) decreased (Peace and Security, Results Matrices, PDP 2011-2016)	HRMO, P/C/MPDO, DILG
	Proportion of vacancies to total plantilla positions, previous and present administrations	HRMO, Local Budget Office
	Ratio of confidential positions to total plantilla positions, previous and present administrations	HRMO, Local Budget Office
	Ratio of casual employees in previous and present administrations, by sex	HRMO, Local Budget Office
	Ratio of employees by sex to total number of personnel, by type, 2 reference years <ul style="list-style-type: none"> • Managerial • Technical • Administrative 	HRMO, Local Budget Office
Transparency	Policy and guidelines implemented on the development, translation and dissemination	LGU Public Information Office, LGU GFPS

INSTITUTIONAL SUBSECTORS	DATA REQUIREMENTS	DATA SOURCE
	of IEC materials on LGU programs, services and funding outlays on women's empowerment and gender equalit (MCW-IRR Sec. 29)	GERL
	Available IEC materials on their specific programs, services and funding outlays on women's empowerment and gender equality	LGU Public Information Office, P/C/MPDO
	IEC materials translated in major Filipino dialects and disseminated to the public (MCW-IRR Sec. 29)	
	Information campaigns conducted to ensure participation of NGO women representatives in local development councils and other local special bodies (MCW-IRR Sec. 14 B.2)	LGU Public Information Office, P/C/MPDO
	Presence of a public information office or desk	LGU Public Information Office
Development Orientation	Number and type of repealed ordinances and policies discriminatory to women (MCW-IRR Sec. 15)	Local Sanggunian, LGU GFPS, NGOs/POs
	Ordinances and policies with discriminatory provisions repealed and amended by LGU (MCW-IRR Sec. 15 C)	Local Sanggunian, LGU GFPS, NGOs/POs
	Number of consultations with women's groups conducted in the review of laws and local ordinances with discriminatory provisions. (MCW-IRR Sec. 15 C)	Local Sanggunian, LGU GFPS, NGOs/POs
	Number of GAD-responsive policies such as GAD Code and local code for children, 2 years	Local Sanggunian, LGU GFPS, NGOs/Pos, GERL
	Number of anti-VAW ordinances and other measures enacted, 2 years	Local Sanggunian, LGU GFPS, NGOs/Pos, GERL
	Proportion of "development" legislation, including gender-responsive legislations to total Sanggunian output, last and current administrations	Local Sanggunian
	Number of discriminatory ordinances and practices that were withdrawn or cancelled, 2 years	Local Sanggunian, NGOs/POs
	Presence of GAD/women-responsive structure (e.g. Committee on Decorum and Investigation, Council for the Protection of Children in Barangays/Municipality, Sanggunian Committee on Women, Children and Family, GAD focal point/persons, Local Commission on Women)	P/C/MPDO, GERL
	Percentage of women and children's desk to the total number of police stations and sub-stations, 2 years	PNP, LCAT-VAWC
	Percentage of barangays with operational Council for the Protection of Children to total	LCAT-VAWC, DILG, PNP

INSTITUTIONAL SUBSECTORS	DATA REQUIREMENTS	DATA SOURCE
	number of barangays, 2 years	
	Number of gender-responsive economic policies passed and programs and services on labor, wages, occupational health and safety, micro-insurance, social protection, etc. implemented	Local Sanggunian, P/C/MPDO
	Number of advocacy campaigns conducted on women's participation in top level/decision-making positions, 2 years	LGU Public Information Office
	<ul style="list-style-type: none"> • Availability of sex-disaggregated and gender-responsive data to total data generated, 2 years • Use of sex-disaggregated data in planning 	P/C/MPDO, LGU GFPS, NGOs/Pos GERL
	Number of protective ordinances for women workers passed, 2 years	Local Sanggunian
	Presence and maintenance of data and referral systems/linkages	P/C/MPDO
	Number of complaints on sexual harassment at the workplace addressed/resolved, 2 years	CODI, LCAT-VAWC, HRMO
<i>Enterprise development</i>	Ease of Doing Business Rank*** improved (Good Governance and the Rule of Law, Results Matrices, PDP 2011-2016)	LEIPO, P/C/MPDO
	Philippine Business Registry (PBR) fully-operationalized (Competitive Industry and Services Sectors, Results Matrices, PDP 2011-2016)	LEIPO, P/C/MPDO
	Number of women who reported participation in activities related to the implementation and monitoring of gender-responsive economic policies, programs, and services, 2 years	P/C/MPDO, LGU GFPS, NGOs/POs, GERL
	Number of functional networks of women entrepreneurs, 2 years	DA, P/C/MSWDO, LEIPO, NGOs/POs
<i>Peace and Development</i>	Policy and guidelines ensuring women's participation and decision-making in peace processes including women membership in peace panels (MCW-IRR Sec. 32 A)	P/C/MPDO, LGU GFPS , NGOs and POs
	Women members in peace panels (MCW-IRR 32. A)	P/C/MPDO, LGU GFPS , NGOs and POs
	Full participation of grassroots women organizations ensured in implementing UNSC resolutions on women, peace, and security (MCW-IRR Sec. 32 A.1)	P/C/MPDO, LGU GFPS , NGOs and POs
	Women and women's organizations participating in discussions and decision-making in the peace process (MCW-IRR Sec. 32 B)	P/C/MPDO, LGU GFPS , NGOs and POs
	Women's participation in local peace councils tasked to recommend policies and programs on peace issues in the community	P/C/MPDO, LGU GFPS , NGOs and POs

INSTITUTIONAL SUBSECTORS	DATA REQUIREMENTS	DATA SOURCE
	(MCW-IRR Sec. 32 B.2)	
	Women participating in local peace councils	P/C/MPDO, LGU GFPS , NGOs and POs
	(MCW-IRR Sec. 32 B.2)	
	Women and women’s organizations participating in indigenous system of conflict resolution	P/C/MPDO, Barangays, NGOs and POs
	(MCW-IRR Sec. 32 D)	
	Indigenous systems of conflict resolution recognizing and supporting women’s role in conflict-prevention, management, resolution and peacemaking	P/C/MPDO, Barangays, NGOs and POs
	(MCW-IRR Sec. 32 D)	
	Community-based conflict resolution structures institutionalized where women play critical roles	P/C/MPDO, Barangays, NGOs and POs
	(MCW-IRR Sec. 32 D.1)	
	Community-based conflict resolution structures institutionalized	P/C/MPDO, Barangays, NGOs and POs
	(MCW-IRR Sec. 32 D.1)	
	Awards and incentives system recognizing grassroots women of their exemplary achievements in peace building	P/C/MPDO, OPAPP, NGOs and POs
	(MCW-IRR Sec. 32 D.2)	
	Measures for the protection of civilians in conflict prevention management	Office of the Local Chief Executive, P/C/MHO, P/C/MSWDO, local offices of AFP, PNP
	(MCW-IRR Sec. 32 E)	
	Provision of minimum initial service including breastfeeding facilities, adequate water and sanitation facilities, services addressing needs of adolescents and family planning)	Office of the Local Chief Executive, P/C/MHO, P/C/MSWDO, local offices of AFP, PNP
	(MCW-IRR Sec. 32 E)	
	Number of policy instruments crafted and mechanisms established to resolve/settle land disputes (Peace and Security, Results Matrices, PDP 2011-2016)	DA, DAR, NCIP, DENR, P/C/MAO, P/C/MENRO, P/C/Municipal Assessor’s Office, Local Sanggunian
	Policy instruments on good and transparent governance implemented (SGH; PCF) (Peace and Security, Results Matrices, PDP 2011-2016)	Local Sanggunian
	Transparency and Accountability mechanisms in conflict-affected areas (CAAs) implemented (Peace and Security, Results Matrices, PDP 2011-2016)	LPDO, OPAPP, NCIP, AFP
	More households and communities in CAAs are benefited by conditional cash transfers, Community-Driven Development (CDD) projects and community livelihood (Peace and Security, Results Matrices, PDP 2011-	P/C/MSWDO, DSWD

INSTITUTIONAL SUBSECTORS	DATA REQUIREMENTS	DATA SOURCE
	2016)	
GENDER MAINSTREAMING		
Planning, Programming, Budgeting, Monitoring and Evaluation	GAD PAPs other than those included in your GAD Plan and Budgets formulated and/or implemented ____. (MCW-IRR Sec. 37 A.1.a)	P/C/MPDO, LGU GFPS, GERL
	Number of provinces/cities/municipalities with the following gender-responsive: <ul style="list-style-type: none"> Executive-Legislative Agenda (ELA), Comprehensive Land Use Plan (CLUP), Provincial Development and Physical Framework Plan (PDPFP) and Annual Investment Program (AIP) (MCW-IRR Sec. 37 A. 4. d)	P/C/MPDO, LGU GFPS
	Annual MCW progress report submitted to DILG on January of every year (MCW-IRR Sec. 41 B)	P/C/MPDO, LGU GFPS
	MCW indicators adopted/integrated in existing M&E (MCW-IRR Sec. 41 B)	P/C/MPDO, LGU GFPS
	Formulation of annual GAD plans and budgets (GPBs) (MCW-IRR Sec. 37 A. 1)	P/C/MPDO, LGU GFPS
	Submission of annual GAD Plan and Budget to DILG for review and endorsement (MCW-IRR Sec. 37 A.1 g)	P/C/MPDO, LGU GFPS, DILG
	Submission of annual GAD Accomplishment Report (AR) to DILG for review (MCW-IRR Sec. 37 A.1 g)	P/C/MPDO, LGU GFPS, DILG
	Percentage allocation of LGU total budget appropriations to PAPs in the GPB (MCW-IRR Sec. 37 A.1 c)	LFC, P/C/MPDO, LGU GFPS
	Percentage utilization of the LGU budget for GAD (MCW-IRR Sec. 37 A. 5. c)	LFC, P/C/MPDO, LGU GFPS
	Existing M&E systems used to monitor PAPs implementation (MCW-IRR Sec. 41 B)	P/C/MPDO, LGU GFPS
	<ul style="list-style-type: none"> Percent of government budget for GAD utilized (CORE GAD) Percent of government budget for GAD allocated 	LFC, LPDO, LGU GFPS, GERL, Local Budget Office

INSTITUTIONAL SUBSECTORS	DATA REQUIREMENTS	DATA SOURCE
GAD Code	Development/enhancement or amendment of LGU GAD Code and IRR (MCW-IRR Sec. 37 B. 1 and 2)	Sangguniang Panlalawigan/ Panglungsod/Bayan, P/C/MPDO, LGU GFPS
GAD Focal Point System	Policy issuances or directives on the creation, strengthening and institutionalization of LGU GAD Focal Point System (MCW-IRR Sec. 37 C)	Office of the Local Chief Executive, P/C/MPDO, LGU GFPS
	GAD Focal Point System created and/or reconstituted/strengthened in accordance with the MCW-IRR or PCW-DILG-DBM-NEDA JMC 2013-01 (MCW-IRR Sec. 37 C. 1, 2. a-i)	Office of the Local Chief Executive, P/C/MPDO, LGU GFPS
GAD Database	Presence of a functional GAD Databases (MCW-IRR Sec. 37 D)	P/C/MPDO, LGU GFPS

¹ Department of Interior and Local Government. Guide to Ecological Profiling. http://www.dilg.gov.ph/PDF_File/programs/projects/reports/DILG-Reports-201128-27591b1efb.pdf. Accessed last October 23, 2012.

² DILG. Guide to Ecological Profiling.

³ National Statistics Office. Singular mean age refers to the average number of years an individual remains in a single state. It is derived from the data on proportions of never married individuals for each group. http://www.census.gov.ph/sites/default/files/attachments/ird/quickstat/Gender%202012%202nd%20quarter_0.pdf Accessed on October 9, 2012.

⁴ The LGU may also coordinate with the provincial/city/municipal offices of the DepEd for data on the Basic Education Information System (BEIS). The BEIS is the primary management information system of the DepEd. It contains school statistics such as teaching and non-teaching personnel, classrooms, furniture and toilets. The BEIS also contains data on the status of school buildings, titling of school sites, damages caused by calamities, textbooks and processes the results of the achievement tests such as National Achievement Test and Regional Achievement Test, nutritional status of pupils and students in public schools. Likewise, data or modules on the competency strengths and gaps of teachers and participation of athletes in Palarong Pambansa and school sports may also be available. Department of Education. Basic Education Information System (BEIS). <http://beis.depedonline.net/>. Accessed last October 12, 2012

⁵ NSO. Simple literacy rate is the ability to read and write a simple message in any language or dialect.

⁶ NSO. Functional literacy rate refers reading, writing and numeracy skills.

⁷ The Local Committee Against Trafficking-Violence Against Women and Children (IACATVAWC) are the local counterparts of the Inter-Agency Council Against Trafficking (IACAT) and Inter-Agency Committee on Violence Against Women (IACVAWC). In 2010, the PCW, DILG, DOH, DepEd and DSWD also issued JMC 2010-02 or Guidelines on the Establishment of Violence Against Women (VAW) Desk in Every Barangay.

⁸ The National Housing Authority (NHA) assists the LGUs in the development of resettlement sites under its Resettlement Assistance Program for LGUs.

⁹ The DILG issued MC 2012-61 or the Guidelines in the Establishment and Management of a Referral System on Violence Against Women (VAW) at the Local Government Unit Level mandating all LGUs to adopt and/or utilize said guidelines in the provision of an integrated and coordinated community response to VAW victims. According to the circular, the referral system shall cover the implementation of RA 9262 (Anti-Violence against Women and their Children Act of 2004), RA 9208 (Anti-Trafficking Against Persons Act of 2003), RA 8353 (Anti-Rape Law of 1997) and RA 8505 (Rape Victim Assistance and Protection Act of 1995). It also includes the RA 7877 or the Anti-Sexual Harassment Act of 1995 “in so far as community response is concerned”.

¹⁰ This is drawn from NSCB’s Updates on Women and Men in the Philippines, their 2012 Fact sheet on women and men at <http://www.nscb.gov.ph/factsheet/pdf12/Final%202012%20Factsheet%20on%20WAM%20as%20of%2009Mar2012.pdf>. Accessed last October 20, 2012.

ANNEX C. ROLES AND RESPONSIBILITIES OF LOCAL GOVERNMENT UNITS (LGUs) IN IMPLEMENTING THE MAGNA CARTA OF WOMEN

Table 1 of Annex C contains the roles and responsibilities of Provinces, Cities, Municipalities and Barangays, as applicable, in implementing the Magna Carta of Women in the following sectors: **a). Agriculture, b). Health, c). Social Welfare, d). Environment, Water and Sanitation, e). Education, f). Peace and Order and Public Safety, g). Public Works and Infrastructure, h). Housing, i). Information and Communication, j). Tourism, and k). Market, Investment Support and Industry.**

On the other hand, Table 2 of Annex C spells out the basic services and facilities that LGUs should provide their constituents based on the Local Government Code of 1991. The matrices are designed to guide the users in making full use of the information enumerated in this Annex. LGUs may also refer to other GAD-related mandates such as the Convention on the Elimination of All Forms of Discrimination Against Women (CEDAW)¹, the Beijing Platform for Action (BPA)² and the Millennium Development Goals (MDGs)³.

Table 1. Roles and Responsibilities of LGUs in Implementing the Magna Carta of Women

I. AGRICULTURE
<p>IRR Sec. 23. The LGUs shall:</p> <ul style="list-style-type: none"> • Undertake programs and projects on food security that are gender- responsive; • Recognize women as farmers and fisher folk and give them equal opportunities to participate in programs and projects; • Ensure the active and direct participation of rural women’s groups, in policy and program formulation, planning and designing, implementation, monitoring and evaluation of DA programs at the local levels, etc; and • Formulate and implement a community-based food security plan. <p>IRR Sec. 23(B6). The LGUs shall:</p> <ol style="list-style-type: none"> a. Develop a standard registration form for municipal fisherfolk, fishing vessels and gears as stated in Sec. 19 of the Philippine Fisheries Code of 1998. b. Maintain an updated database of women fisherfolks that may be accessed by BFAR, PCW and other interested institutions for program development and policy-making. <p>IRR Sec. 23(7). The LGUs and BFAR shall ensure the full participation of women in the planning and designing, implementation, monitoring and evaluation of coastal resource management programs; and designate coastal areas to be managed by women.</p> <p>IRR Sec. 23. (B9). g. DA and LGUs shall ensure participation of rural women by tapping existing peoples’ organizations, NGOs and rural women groups in their training on food production with emphasis on sustainable agriculture and fisheries such as but not limited to production of organic inputs and fertilizers, natural farming and vermin composting, and other technologies.</p> <p>IRR Sec. 23 (B10) e. Together with LGUs, develop and implement community seed banking and farmer-to-farmer seed exchange.</p>
II. HEALTH
<p>IRR Sec. 12. (B2). In their humanitarian actions, observe and implement international standards such as the Minimum Initial Service Package (MISP) for Reproductive Health.</p> <p>IRR Sec. 20. (B6). The LGUs shall:</p> <ol style="list-style-type: none"> a. Promulgate and implement gender-responsive, rights-based and culture sensitive local

¹ The full text of CEDAW is downloadable at <http://www.un.org/womenwatch/daw/cedaw/text/econvention.htm>

² The BPA can be downloaded at <http://www.un.org/womenwatch/daw/beijing/pdf/BDPfA%20E.pdf>.

³ For the MDGs, please follow <http://www.nscb.gov.ph/stats/mdg/assessment.asp>.

ordinances and policies that promote the comprehensive health of girls, adolescents, women and elderly women, such as a GAD Code and/or Reproductive Health Code;

- b. Formulate a health human resource development plan that will ensure the following: (i) sufficient number of skilled health professionals to attend to all deliveries; and (ii) availability of qualified and capable health service providers, to include coordination with the academe, a human resource deployment program to meet LGU needs;
- c. Develop health programs that: (i) encourage constituents to access and demand services for women and girls; (ii) involve women and girls in planning health programs and in decision-making; (iii) allocate budget or resources for implementing programs for women and girls in the local level; (iv) monitor progress of programs for women and girls through implementation review and research; and (v) enhance parent effectiveness services and programs to include continuing education on gender-based violence such as domestic violence, rape, incest, prostitution, trafficking and other forms of violence against women and girls in every barangay;
- d. Coordinate with DOH in the organization of inter-local health zones for the purpose of ensuring the provision of health services for neighboring communities;
- e. Strengthen the local health board to respond to the health needs of girls, female adolescents, women and women senior citizens;
- f. Develop/design an award system to encourage excellent performance in the promotion and implementation of women's health programs;
- g. Organize communities with the private sector to implement health programs for women and girls; and
- h. Continue dialogues to clarify implementation of laws in relation to pregnancy that endangers the life of the mother.

IRR Sec. 30 (D). The State, through the PhilHealth and LGUs, shall establish a health insurance program for senior citizens and indigents.

III. SOCIAL WELFARE

IRR Sec. 12. (B8). LGUs shall provide temporary shelter to displaced women and children in situations of armed conflict.

IRR Sec. 12. (B6). The LGUs and DSWD shall provide psychosocial interventions to combatants and non-combatants, especially children who suffered from armed conflict.

IRR Sec. 12. (C). All government personnel, including LCEs of LGUs involved in the protection and defense of women against gender-based violence, shall regularly undergo the mandatory training on gender and human rights, on the cycle and continuum of violence, counseling and trauma healing.

IRR Sec.12. (D). All provincial governors, and city and municipal mayors shall ensure the establishment of a VAW Desk in every barangay within their jurisdiction and provide technical and financial assistance.

IRR Sec. 17. (F). LGUs, and other sports-related organizations shall:

1. Train more female coaches for girls and women's teams;
2. Conduct activities such as sports clinics and seminars for potential female leaders, coaches, teachers at least once a year;
3. Provide equal incentives and awards for both men and women for any competition;
4. Provide equal opportunities for scholarships and travel grants for women leaders, coaches and athletes with adequate support mechanism; and
5. Provide sufficient funds to support girls and women in sports.

IRR Sec.17G. All NGAs/LGUs increase women's participation by forming women's and girls' teams in various sporting events that they organize or sponsor.

IRR Sec. 22B. The LGUs shall:

1. Provide trainings and seminars on the popularization of rights and obligations of spouses towards each other, management of household and parental authority to impede the stereotyping of roles, multiple burden, marginalization and subordination of women;
2. Through the local health office, local social welfare and development office, or population

office, ensure gender sensitive conduct of pre-marriage counseling program to promote family planning, responsible parenthood, equal relations and shared responsibility between spouses in parenting and household management;

3. Advocate that spouses have the moral obligation and responsibility in assuring the rights and well-being of their children, regardless of sex;
4. Ensure that couples and individuals shall be given the full range of information and services for them to exercise their rights to decide over the number and spacing of children; and
5. Include in the trainings and seminars in barangays the education and popularization of the Act and the Family Code, especially on the obligations and responsibilities of spouses to eliminate gender bias.

IRR Sec. 30 (B3). LGUs shall mainstream all programs and services on poverty reduction and include Occupational Safety and Health (OSH), disaster risk reduction and management at the local levels.

IRR Sec. 33. LGUs are therefore mandated to deliver the necessary services and interventions to WEDC under their respective jurisdictions.

IRR Sec. 34. LGUs shall ensure gender-responsive, rights based and culture-sensitive services and interventions for WEDC and their families.

IRR Sec. 35. The LGUs shall:

- Eliminate all forms of discrimination against girl-children in education, health and nutrition, and skills development;
- Conduct community consultations on the effect of child marriages on the health, education, and over-all situation of a girl-child;
- Organize and make functional Local Councils for the Protection of Children (LCPCs). DILG shall monitor the compliance thereof; and
- Ensure the organization and functionality of the LCPCs.

IRR Sec. 36. The LGUs shall:

- Ensure that specific needs and concerns of women senior citizens are identified and addressed.
- Develop and utilize supportive community resources that provide in-home services, respite care, and stress reduction with high-risk families.

IV. ENVIRONMENT, WATER AND SANITATION

SECTION 13. Women Affected by Disasters, Calamities, and Other Crisis Situations

B. (3). Timely, adequate and culturally-appropriate provision of relief goods and services such as food, water, sanitary packs, psychosocial support, livelihood, education and comprehensive health services including implementation of the MISPP for sexual and reproductive health at the early stage of the crisis.

B. (5). Active involvement of women in the various camp committees organized for food and water distribution, nutrition, sanitation and hygiene, shelter, health, education, protection.

CHAPTER V. RIGHTS AND EMPOWERMENT OF MARGINALIZED SECTORS

Sec. 20

b (5). Equal rights to women to the enjoyment, use, and management of land, water, and other natural resources within their communities or ancestral domains;

5 (c). Provide access to small irrigation and rainwater harvesting facilities as well as programs on rehabilitation of watershed areas to small women farmers; and

6 (c). LGUs to develop a standard registration form for municipal fisher folk, fishing vessels and gears as stated in Section 19 of the Philippine Fisheries Code of 1998. The Registry of Municipal Fisher folk shall serve as basis for the identification of priority municipal fisher folk who shall be allowed to fish within the municipal waters.

IRR SEC. 24. LGUs shall develop housing programs for women that are localized, simple, and accessible, with potable water and electricity, secure, with viable employment opportunities, and

affordable amortization.

IRR SECTION 32 (E). Provision of the minimum initial service including adequate breastfeeding facilities, water and sanitation facilities, services addressing special needs of adolescents, and family planning.

V. EDUCATION

IRR Sec.16 (C5). Provide appropriate assistance to female faculty and students who are victims of rape, sexual harassment and other forms of discrimination and violence against women.

IRR Sec. 17 (F). PSC and GAB in coordination with the DepEd, CHED, SUCs, LGUs, and other sports-related organizations shall endeavor to:

- Conduct activities such as sports clinics and seminars for potential female leaders, coaches, teachers at least once a year;
- Provide equal opportunities for scholarships and travel grants for women leaders, coaches and athletes with adequate support mechanism;
- Provide sufficient funds to support girls and women in sports; and
- Form more girls' and women's teams in athletic leagues like the Palarong Pambansa, University Athletic Association of the Philippines, National Collegiate Athletic Association, Private Schools Athletic Association, and University Games.

IRR Sec. 22 (B)

- Provide trainings and seminars on the popularization of rights and obligations of spouses towards each other, management of household and parental authority to impede the stereotyping of roles, multiple burden, marginalization and subordination of women;
- Through the local health office, local social welfare and development office, or population office, ensure gender sensitive conduct of pre-marriage counseling program to promote family planning, responsible parenthood, equal relations and shared responsibility between spouses in parenting and household management;
- Advocate that spouses have the moral obligation and responsibility in assuring the rights and well-being of their children, regardless of sex;
- Ensure that couples and individuals shall be given the full range of information and services for them to exercise rights to decide over the number and spacing of children; and
- Include in the trainings and seminars in barangays the education and popularization of the Act and the Family Code, especially on the obligations and responsibilities of spouses to eliminate gender bias.

VI. PEACE AND ORDER AND PUBLIC SAFETY

IRR Sec. 12. The LGUs shall:

- Provide psychosocial interventions to combatants and non-combatants, especially children who suffered from armed conflict.
- Provide temporary shelter to displaced women and children in situations of armed conflict.

IRR Sec. 18A. The DND, DILG, DOJ and LGUs shall:

1. Grant the same privileges and opportunities to men and women.
2. Give equal consideration to men and women in the area or field of assignment to eliminate discrimination of women, including revision or abolition of policies and practices that restrict women from availing both combat and non combatant trainings.

IRR Sec. 32 (2). LGUs shall ensure women's participation in local peace and order councils tasked to recommend policies and programs on peace issues in the community.

IRR Sec. 32 (B.2). LGUs involving people's organizations, particularly women's organizations, shall ensure the development and inclusion of women's issues and concerns in the peace agenda.

IRR Sec. 32(D.1). LGUs shall institutionalize community-based conflict resolution structures where women play critical roles.

IRR Sec. 32 (D.2) With OPAPP, institutionalize the provision of incentives and awards in recognition of grassroots women of their exemplary achievements in peace building, and in coordination with PCW and peace NGOs, shall publish women's stories on peace and development.

IRR Sec. 32 (E). With AFP, institute measures for the protection of civilians in conflict affected communities with special consideration of the specific needs of women and girls.

VII. PUBLIC WORKS AND INFRASTRUCTURE

Sec. 23. (B4). Together with the DA, Department of Public Works and Highways (DPWH), DAR, ensure access and links of production areas to markets and stimulate economic activities in the communities as well as provide better access to social services by constructing farm-to-market roads in the rural areas.

VIII. HOUSING

Sec. 24 (A). Develop housing programs for women that are localized, simple, and accessible, with potable water and electricity, secure, with viable employment opportunities, and affordable amortization.

Sec. 24 (A). The LGUs shall:

1. Ensure full participation and involvement of women in land use, zoning and community planning and development through capability building and skills training in shelter and urban development;
2. Ensure that female-headed households are not discriminated in the provision of relocation or resettlement sites and that access to basic services, facilities, employment, and livelihood opportunities are responsive to the needs of women;
3. Provide basic social services in resettlement communities in accordance with existing laws;
4. Formulate policies and programs to ensure that housing programs and services are provided to women belonging to the marginalized sectors;
5. Ensure that forms and documents are gender-responsive especially those involved in transactions of (a) married couples, (b) persons in unions without marriage, and (c) single individuals. Within one (1) year from the effectivity of these Rules and Regulations, key shelter agencies shall also conduct a review of their agency guidelines to ensure that the guidelines are gender-responsive. Thereafter, a periodic review shall be conducted;
6. Monitor and evaluate gender design features in housing and urban development and all other kinds of infrastructure plans and strategies to ensure that all housing projects, whether undertaken by the government agencies or the private sector, are able to secure the privacy and safety of women and children;
7. Undertake a massive information dissemination campaign to increase the awareness of women on their property and housing rights, including the right of women to information and to transact business with shelter agencies; and
8. Ensure women's participation in the development of land use plans and implementation of zoning ordinances.

Sec. 28 (A). Concerned agencies, in cooperation with women's organizations, shall implement capability-building and leadership formation programs as well as undertake affirmative action measures to enable grassroots women leaders to effectively participate in the decision and policy-making bodies in their respective sectors, including but not limited to the following bodies:

7. Local Housing Boards (LHBs), whenever applicable.

IX. INFORMATION AND COMMUNICATION

IRR Sec. 19 (E). Creation of Local Media Board (LMB) in all LGUs to monitor the implementation of these Rules and Regulations shall also be encouraged.

IRR Sec. 22 (B). The LGUs shall:

1. Provide trainings and seminars on the popularization of rights and obligations of spouses towards each other, management of household and parental authority to impede the stereotyping of roles, multiple burden, marginalization and subordination of women;
2. Ensure that couples and individuals shall be given the full range of information and services for them to exercise rights to decide over the number and spacing of children; and
3. Include in the trainings and seminars in barangays the education and popularization of the Act and the Family Code, especially on the obligations and responsibilities of spouses to eliminate gender bias.

IRR Sec. 29. Develop and make available information, education and communication (IEC) materials on their specific programs, services and funding outlays on women's empowerment and gender equality.

- Through the local health office, local social welfare and development office, or population office, ensure gender sensitive conduct of pre-marriage counseling program to promote family planning, responsible parenthood, equal relations and shared responsibility between spouses in parenting and household management.
- Ensure that couples and individuals shall be given the full range of information and services for them to exercise rights to decide over the number and spacing of children.

X. TOURISM

IRR Sec. 23 B 5.b With DOT, promote community-managed, eco-tourism projects participated by women stakeholders from the community.

XI. MARKET, INVESTMENT SUPPORT AND INDUSTRY

Sec. 23 (B) a. Ensure access and links of production areas to markets and stimulate economic activities in the communities as well as provide better access to social services by constructing farm-to market roads in the rural areas.

Sec. 23(B6)

- a. Develop a standard registration form for municipal fisher folk, fishing vessels and gears as stated in Sec. 19 of the Philippine Fisheries Code of 1998.

Sec. 23 (B8). There shall be no discrimination against women in the deputization of fish wardens. Towards this end, the LGUs shall:

- a. Deputize women who are already functioning as fish wardens within six (6) months upon adoption of these Rules and Regulations;
- b. Provide venues where women's roles as effective fish wardens will be recognized;
- c. Provide capacity development training for women fish wardens; and
- d. Provide social and legal protection for all deputized fish wardens.

Sec. 25C. LGUs shall initiate investment friendly policies, systems, programs and procedures as well as provide technical assistance and supporting financial arrangements to returning women migrant workers to help them establish local business.

Sec. 26. Provide trainings focused on packaging, marketing, product development, upscaling enterprises and venturing into exports, and shall ensure availability and access of women to business guides, business matching, business templates for start-ups, as well as business counseling.

Sec. 30. (B4). Sustain labor market programs to create employment and alternative livelihood following decent work standards.

IRR Sec.25.C. DTI, DOLE, other concerned government agencies, and the LGUs shall initiate investment friendly policies, systems, programs and procedures as well as provide technical assistance and supporting financial arrangements to returning women migrant workers to help them establish local business.

Sec. 30 (D). Sustain labor market programs to create employment and alternative livelihood following decent work standards.

Table 2. Basic Services and Facilities based from Local Government Code of 1991

PROVINCES	CITIES	MUNICIPALITIES	BARANGAYS
I. AGRICULTURE			
<ul style="list-style-type: none"> • Agricultural extension and on-site research services and facilities through: <ol style="list-style-type: none"> 1) Prevention and control of plant and animal pests and disease; 2) Establishment and maintenance of dairy farms, livestock markets, animal breeding stations, and artificial insemination centers 3) Assistance in the organization of farmers' and fisherfolks' cooperatives and other collective organizations 4) Transfer of appropriate technology <ul style="list-style-type: none"> • Industrial research and development services, as well as transfer of appropriate technology 	<ul style="list-style-type: none"> • Agricultural extension and on-site research services and facilities through: <ol style="list-style-type: none"> 1) Prevention and control of plant and animal pests and disease; 2) Establishment and maintenance of dairy farms, livestock markets, animal breeding stations, and artificial insemination centers 3) Assistance in the organization of farmers' and fishermen's cooperatives and other collective organizations 4) Transfer of appropriate technology <ul style="list-style-type: none"> • Industrial research and development services, as well as transfer of appropriate technology 	<p>Agriculture and fishery extension and on-site research through:</p> <ul style="list-style-type: none"> • Dispersal of livestock and poultry, fingerlings and other seeding materials for agriculture; • Establishment and maintenance of seed farms for palay, corn and vegetables; medicinal plant gardens; seedling nurseries for fruit trees, coconuts and other trees or crops; and demonstration farms; • Enforcement of standards for quality control of copra and improvement and delivery of local distribution channels (preferably through cooperatives • Maintenance and operation of inter barangay irrigation system • Implementation of water and soil resource utilization and conservation projects; and • Enforcement of fishery laws in municipal waters including conservation of mangroves 	<p>Agricultural support services:</p> <ul style="list-style-type: none"> • Distribution system for agriculture and fishery inputs • Operation of agricultural and fishery produce collection
II. HEALTH			
<p>Subject to the provisions of Rule XXIII on local health boards, health services which include hospitals and other tertiary health services:</p> <ul style="list-style-type: none"> • Hospitals and other tertiary health services 	<p>Subject to the provisions of Rule XXIII on local health boards, health services which include hospitals and other tertiary health services , including:</p> <ul style="list-style-type: none"> • Implementation of 	<p>Subject to the provisions of Rule XXIII on local health boards and in accordance with the standards and criteria of the Department of Health (DOH), provision of health services through:</p> <ul style="list-style-type: none"> • Implementation of 	<ul style="list-style-type: none"> • Health and social welfare services, through maintenance of barangay health centers and day care centers

PROVINCES	CITIES	MUNICIPALITIES	BARANGAYS
<ul style="list-style-type: none"> Population development services 	<p>programs and projects on primary health care, maternal and childcare, and communicable and non-communicable disease control services</p> <ul style="list-style-type: none"> Access to secondary and tertiary health services Purchase of medicines, medical supplies and equipment needed to carry out the devolved health services Nutrition services Family planning services Clinics, health centers and other health facilities needed to carry out health services 	<p>programs and projects on primary health care, maternal and childcare, and communicable and non-communicable disease control services</p> <ul style="list-style-type: none"> Access to secondary and tertiary health services Purchase of medicines, medical supplies and equipment needed to carry out the devolved health services Nutrition services Family planning services Clinics, health centers and other health facilities needed to carry out health services 	
III. SOCIAL WELFARE			
<p>Social welfare services:</p> <ul style="list-style-type: none"> Programs and projects on rebel returnees and evacuees Relief operations Population development services 	<ul style="list-style-type: none"> Social welfare services which include programs and services: <ul style="list-style-type: none"> ✓ programs and projects on child and youth welfare ✓ family and community welfare ✓ women's welfare ✓ welfare of the elderly and disabled persons; ✓ community-based beggars ✓ street children, ✓ scavengers, ✓ juvenile delinquents and victims of child abuse; ✓ livelihood and other pro-poor projects; ✓ nutrition services ✓ family planning services Programs and projects on rebel returnees and evacuees 	<p>Provision of social welfare services through:</p> <ul style="list-style-type: none"> Programs and projects for the welfare of the youth and children, family and community, women, the elderly and the disabled; Community-based rehabilitation programs for vagrants, beggars, street children, scavengers, juvenile delinquents and victims of drug abuse Livelihood and other pro-poor projects; Nutrition services Family planning services 	<p>Maintenance of day care center</p>

PROVINCES	CITIES	MUNICIPALITIES	BARANGAYS
	<ul style="list-style-type: none"> • Relief operations 		
IV. ENVIRONMENT/WATER AND SANITATION			
<p>Pursuant to national policies and subject to supervision, control and review of the DENR:</p> <ul style="list-style-type: none"> • Enforcement of forestry laws limited to community-based forestry projects, pollution control law, small-scale mining law and other laws on the protection of the environment • Mini-hydroelectric projects for local purposes 	<ul style="list-style-type: none"> • Enforcement of forestry laws limited to community-based forestry projects, pollution control law, small-scale mining law and other laws on the protection of the environment • Mini-hydroelectric projects for local purposes • Implementation of community-based forestry projects (subject to supervision, review and control of DENR) • Management and control of communal forest with an area not exceeding 50 sq.km. • Establishment of tree parks, greenbelts and similar forest • Solid waste disposal system or environmental management system and services or facilities related to general hygiene and sanitation 	<ul style="list-style-type: none"> • Implementation of community-based forestry projects (subject to supervision, review and control of DENR) • Management and control of communal forest with an area not exceeding 50 sq.km. • Establishment of tree parks, greenbelts and similar forest development projects • Solid waste disposal system or environmental management system and services or facilities related to general hygiene and sanitation 	<ul style="list-style-type: none"> • Services and facilities related to general hygiene and sanitation • Beautification • Solid Waste collection • Maintenance of water supply system
V. EDUCATION			
	School buildings and other facilities for public elementary and secondary schools	School buildings and other facilities for public elementary and secondary schools	Information and reading center
VI. PEACE AND ORDER AND PUBLIC SAFETY			
Provincial jails	Sites for police and fire stations and sub-stations and the city jail	Provision of sites for police and fire stations and sub-stations and the municipal jail	Administration and maintenance of Katarungang Pambarangay
VII. PUBLIC WORKS AND INFRASTRUCTURE			
<p>Construction and maintenance of:</p> <ul style="list-style-type: none"> • Provincial buildings • Provincial jails • Freedom parks • Public assembly roads; 	<p>Construction and maintenance of:</p> <ul style="list-style-type: none"> • City roads and bridges; • School buildings and other facilities for public elementary and 	<p>Construction and maintenance of infrastructure facilities funded by the municipality to serve the needs of the residents including, but not limited to:</p>	<p>Maintenance of barangay roads and bridges</p> <p>Infrastructure facilities such as:</p> <p>a) Multi-purpose hall;</p>

PROVINCES	CITIES	MUNICIPALITIES	BARANGAYS
<ul style="list-style-type: none"> • Other similar facilities • Construction and maintenance of infrastructure facilities funded by the province to serve the needs of the residents including, but not limited to: <ul style="list-style-type: none"> • Provincial roads and bridges • Inter-municipal waterworks, drainage and sewerage, flood control and irrigation systems • Reclamation projects; and • Other similar facilities. 	<ul style="list-style-type: none"> secondary schools • Clinics, health centers, and other health facilities necessary to carry out health services • City buildings • Communal irrigation, small water impounding projects • Fish ports • Artesian wells, spring development, rain water collectors and water supply systems • Inter-municipal waterworks • Irrigation systems • Reclamation projects • Seawalls, dikes, drainage and sewerage • Flood control • Traffic signals and road signs • Cultural centers • Public parks including freedom parks, playgrounds, and sports facilities and equipment and other similar facilities • Public cemetery • Maintenance of public library • Other similar facilities 	<ol style="list-style-type: none"> a. Municipal roads and bridges; b. School buildings and other facilities for public elementary and secondary schools c. Clinics, health centers, and other health facilities necessary to carry out health services d. Communal irrigation, small water impounding projects and other similar projects; e. Fish ports; f. Artesian wells, spring development, rain water collectors and water supply systems; g. Seawalls, dikes, drainage and sewerage h. Flood control i. Traffic signals and road signs j. Cultural centers k. Public parks including freedom parks, playgrounds, and sports facilities and equipment and other similar facilities l. Public cemetery m. Maintenance of public library 	<ol style="list-style-type: none"> b) Multi-purpose pavement; c) Plaza; d) Sports center; e) other similar facilities
VIII. HOUSING			
<p>Planning and implementation of the programs and projects for low-cost housing and other mass dwellings except those funded by SSS, GSIS and HDMF</p> <p>National funds for these programs and projects shall be equitably allocated to the regions in proportion to the ratio of the homeless to</p>	<p>Planning and implementation of the programs and projects for low-cost housing and other mass dwellings except those funded by SSS, GSIS and HDMF</p>	<p>Planning and implementation of the programs and projects for low-cost housing and other mass dwellings except those funded by SSS, GSIS and HDMF</p>	

PROVINCES	CITIES	MUNICIPALITIES	BARANGAYS
the population.			
IX. INFORMATION AND COMMUNICATION			
<ul style="list-style-type: none"> Information services which include investments and job placement information system. Tax and marketing information systems Upgrading and modernization of tax information and collection services through computer and other means Provision for inter-municipal telecommunications services, subject to national policy guidelines and standards 	<ul style="list-style-type: none"> Adequate communication and transportation facilities Information services which include investments and job placement information system. Tax and marketing information systems Upgrading and modernization of tax information and collection services through computer and other means Provision for inter-municipal telecommunications services, subject to national policy guidelines and standards 	<ul style="list-style-type: none"> Information services which include investments and job placement information system. Upgrading and modernization of tax information and collection services through computer and other means Inter-municipal telecommunications services, subject to national policy guidelines 	
X. TOURISM			
Planning and implementation of tourism development and promotion programs.	<ul style="list-style-type: none"> Planning and implementation of tourism development and promotion programs Tourism facilities and tourist attractions Acquisition of equipment, regulation and supervision of business concessions, and security services for such facilities 	<ul style="list-style-type: none"> Construction, maintenance and operation of tourism facilities and other tourist attractions, including acquisition of equipment, regulation and supervision of business concessions, and security services for such facilities 	
XI. MARKET, INVESTMENT SUPPORT AND INDUSTRY			
<ul style="list-style-type: none"> Provision for investment support services including access to credit financing Industrial research and development services Transfer of appropriate technology Upgrading and modernization of tax information and 	<ul style="list-style-type: none"> Provision for investment support services including access to credit financing Industrial research and development services Transfer of appropriate technology Upgrading and modernization of tax information and 	<ul style="list-style-type: none"> Construction, maintenance, and operation of municipal public markets, slaughterhouses and other economic enterprises Provision of information services through investment and job placement information systems, tax and marketing 	<ul style="list-style-type: none"> Satellite or public market, where viable

PROVINCES	CITIES	MUNICIPALITIES	BARANGAYS
collection services through the use of computer hardware and software and other means	collection services through the use of computer hardware and software and other means <ul style="list-style-type: none"> • Construction, maintenance, and operation of municipal public markets, slaughterhouses and other economic enterprises • Provision of information services through investment and job placement information systems, tax and marketing information systems 	information systems	

ANNEX D: GUIDE IN COMPLETING THE GAD PLAN AND BUDGET FORM

Note: The form at the end of this section guides the LGU in preparing its GAD plan and budget. Specific examples are provided as each column is discussed.

Column 1: Gender Issue and/or GAD Mandate

The priority gender issues identified through the LGU's review of its flagship or regular programs, analysis of sex-disaggregated data or relevant information that surface the unequal situation of women and men will be listed in this column. The gender issue could be client-or organization-focused. A client-focused gender issue refers to concerns arising from the unequal status of women and men stakeholders, clients, and or constituents of LGUs including the extent of their disparity over benefits from and contribution to a policy/program and/or project of the LGU. Examples include lack of access of marginalized and indigent women to social protection programs and services of the LGU on health. On the other hand, an organization-focused gender issue points to the gap/s in the capacity of the LGU to integrate a gender dimension in its programs, systems or structure. An example is the slow progress of gender mainstreaming in the LGU.

Aside from the priority gender issues, the LGU may directly cite relevant specific provisions from GAD-related laws (e.g. R.A. 9710 or the Magna Carta of Women) or plans that it needs to implement (e.g. establishment of VAW desks in every barangay).

The GAD Focal Point System (GFPS) shall prioritize in the LGU's succeeding GAD plan and budget (GPB) the following: a) recurring gender issues; b) results of the assessment of existing programs using the HGDG, GERL Ka Ba Self-Assessment and other relevant tools; and c) gender issues and concerns that have not been addressed in the previous year's GPB.

Column 2: Cause of the Gender Issue

Gender analysis proceeds from identifying the issue (what?) to explaining the issue (why the issue?). It is important to establish the cause or causes of the issue to ensure that the GAD program or activity will directly address the gender issue leading to its gradual or complete elimination.

In the first example given in the GPB template, the LGU should first surface the reason why there is lack of access of marginalized and indigent women to social protection programs and or services of the LGU. Is it because these women are not aware of these programs or there is lack of information dissemination campaign on these programs, thus, women are not aware of such?

In the organization-focused issue, the LGU needs to surface the reason why there is slow progress of gender mainstreaming in the LGU. Is it because there is no GFPS or a similar GAD mechanism to lead gender mainstreaming in the LGU or there is lack of support on GAD initiatives from LGU officials?

Please remember that it may take more than one activity or program to address one gender issue, and some gender issues may take longer than one year to address, hence, some activities may recur or be implemented in a progressive manner until the issue is completely addressed. On the other hand, it is possible that one program may address several gender issues or causes of a gender issue.

Column 3: GAD Objective

The GAD objective should respond to the gender issue including its cause or implement the specific GAD mandates relevant to the LGU. It spells out the result that the LGU intends to achieve. It may also be the intended result of the GAD mandate the LGU intends to implement. The objective must be specific, measurable, attainable, realistic and time-bound. In addressing a gender issue, it is possible that the GAD objective could not be realized in one planning period. Thus, the LGU may plan related GAD activities to achieve the same objective over several planning periods until the GAD objective or targeted result is achieved.

In the client-focused example, the short term GAD objective may be to increase and sustain access of marginalized and indigent women constituents to social protection programs and services of the LGU. In the organization-focused example, the GAD objective may be to facilitate and sustain gender mainstreaming in the LGU and thus address the gap of the LGU in integrating gender dimension in its

programs and or services. If facilitating gender mainstreaming cannot be achieved in one year, the LGU may plan related activities until such time that the objective is achieved.

Column 4: Relevant LGU PPA

This column indicates the relevant PPAs of the LGU that can be integrated with gender perspective to respond to the gender issues and/or implement the specific GAD mandate/s identified in Column 1. This ensures that gender perspective is mainstreamed and sustained in the LGU's mandates and regular programs.

Column 5: GAD Activity

Similar to the GAD objective, the proposed GAD activities should respond to the gender issue including its cause/s or implement the specific GAD mandates relevant to the LGU.

The proposed GAD activity, which can either be client- or organization-focused, should be stated as clearly as possible to facilitate budgeting.

Client-focused GAD activities are activities that seek to address the gender issues of the LGU's constituents or contribute in responding to the gender issues and concerns in the LGU. For example, to respond to the identified gender issue and/or cause of the gender issue, the LGU may implement or conduct the following: a) conduct massive information education campaign on the social protection program or scheme; b) assist in the enrollment of the marginalized and indigent women to the Philhealth scheme; and c) promulgate and implement an ordinance on the access of women to social protection program of the LGUs.

Organization-focused activities may seek to: a) create the organizational environment for implementing gender-responsive policies, programs, projects and services; b) address the gap in knowledge, skills and attitudes of key personnel on gender mainstreaming; and c) address the gender issues of employees in the workplace subject to the mandate of the organization. For example, to respond to the identified gender issue on the slow progress of gender mainstreaming in the LGU, it may implement the following: a) issuance of an executive order for the creation and/or strengthening of the GFPS or similar mechanism; b) creation and/or strengthening of the GFPS in the LGU; and c) institutionalization of gender-responsive PPAs in the LGU.

LGUs shall give priority to client-focused GAD activities. However, LGUs who are in the early stages of gender mainstreaming shall give premium to capacity development of the GFPS and/or similar GAD mechanism and LGU employees on GAD concepts and principles (e.g. gender sensitivity, gender audit, gender analysis, gender-responsive planning and budgeting, gender-responsive project design and implementation and institutional strengthening, among others).

The gender issues to be addressed (Column 1); the cause of the gender issue (Column 2), the GAD result objective (Column 3) and the proposed GAD activity (Column 5) should be aligned to ensure effective GAD planning and budgeting.

Column 6: Performance Indicator

The performance indicators are quantitative or qualitative means to measure achievement of the results of the proposed activity and how they contribute to the realization of the GAD objective.

Quantitative indicators are measures or evidence that can be counted such as, but not limited to, number, frequency, percentile, and ratio. In relation to the example above, the indicator could be number of marginalized and indigent women enrolled in the Philhealth scheme.

Qualitative indicators are measures of an individual or group's judgment and/ or perception of established standards, the presence or absence of specific conditions, the quality of something, or the opinion about something (e.g. gender-responsive policy guidelines on the requirements for marginalized and indigent women to access the social protection programs of the LGU).

Column 7: Performance Target

The target is an important consideration in budgeting for it specifies what the LGU's GPB intends to achieve within one year in relation to the GAD objective. The target should be realistic and attainable within the implementation period and should be set against a baseline data. Monitoring and evaluating the GPB will largely be based on attainment of targets and performance indicators.

For example, to increase the access of marginalized and indigent women constituents to social protection programs, the LGU may set the following targets: e.g. a) x number of IEC campaigns on the social protection program or scheme conducted by end of the year; b) x number of marginalized and indigent women assisted in the enrollment to the Philhealth scheme by 1st quarter; and c) ordinance on the access of women to social protection program of the LGUs issued by end of the year.

Column 8: GAD Budget

The GAD budget is the cost of implementing the GAD plan. For more realistic budgeting, the cost of implementing each activity should be estimated by object of expenditure.

For example, if the LGU conducts a massive information dissemination campaign on its social protection programs, it should cost the supplies for the development, printing and dissemination of the IEC materials, transportation in the conduct of the information campaign, if information campaign is through a forum or consultations, food for x number of persons for x number of days, professional fee for resource persons, communication costs for coordination, among others. It is possible that certain activities do not have direct cost implications.

The GAD budget may be drawn from the LGU's maintenance and other operating expenses (MOOE), capital outlay (CO), and/or personal services (PS) based on the LGU's approved budget. All LGUs shall allocate at least five percent (5%) of their annual budget appropriations to support their respective GAD PPAs.

In determining what can or cannot be charged to the GAD budget, the primary consideration is the **gender issue** being addressed by the expense or activity.

EXAMPLES OF EXPENSES THAT CAN BE CHARGED TO THE GAD BUDGET

1. Programs, projects, activities (PPAs) included in the DILG-approved LGU GAD plan, including relevant expenses such as supplies, travel, food, board and lodging, professional fees, among others;
2. Capacity development on GAD (e.g. Gender Sensitivity Training; Gender Analysis, Gender-responsive Planning and Budgeting, among others.);
3. Activities related to the establishment and/strengthening of enabling mechanisms that support the GAD efforts of LGUs (e.g. GAD Focal Point System, VAW desks, among others);
4. Salaries of LGU personnel assigned to plan, implement and monitor GAD PPAs on a full-time basis, following government rules in hiring and creating positions;
5. Time spent by LGU GAD Focal Point System members or LGU employees doing GAD related work. Overtime work rendered in doing GAD related PPAs may be compensated through a compensatory time off (CTO), following government accounting and auditing rules and regulations;
6. Salaries of police women and men assigned to women's desks;
7. Salaries of personnel hired to manage/operate the GAD Office, if established;
8. LGU programs that address women's practical and strategic needs (e.g. day care center, breastfeeding rooms, crisis or counseling rooms for abused women and children, halfway houses for trafficked women and children, gender-responsive family planning program, among others);

9. Construction expenses for the following :
 - a) Day care center , b) VAWC Center, c) Halfway Houses for trafficked women and girls, d) Women crisis center
10. Consultations conducted by LGUs to gather inputs for and/or to disseminate the GAD plan and budget;
11. Payment of professional fees, honoraria and other services for gender experts or gender specialists engaged by LGUs for GAD-related trainings and activities; and
12. IEC activities (development, printing and dissemination) that support the GAD PPAs and objectives of the LGUs.

The expenditures although allowed, must still follow government accounting rules and regulations.

EXAMPLES OF EXPENSES THAT CAN NOT BE CHARGED TO THE GAD BUDGET

1. Programs, projects, activities (PPAs) that are not in the LGU’s DILG–approved GAD plan;
2. Personal services of women employees **unless** they are working full time or part time on GAD PPAs;
3. Honoraria for LGU’s GFPS members or other employees working on their LGU GAD programs;
4. Salaries of casual or emergency employees **UNLESS** they are hired to assist in GAD-related PPAs;
5. Provision of contingency funds or “other services” of PPAs; and
6. Purchase of supplies, materials, equipment and vehicles for the general use of the LGU.
7. The following expenses **CAN NOT** be charged to the GAD budget **UNLESS** they are justified as clearly addressing a specific gender issue:
 - a) Physical, mental and health fitness including purchase of supplies, materials, equipment and information dissemination materials;
 - b) Social, rest and recreation activities; and
 - c) Religious activities and implementation of cultural projects;

To be able to attribute the cost of gender mainstreaming in a regular program of an LGU, it may assess the program or project using the Harmonized GAD Guidelines (HGDG). The program or project should be assessed at two levels: 1) the design of the project or program, using the original/revised design documents; and 2) at the project/program implementation, management, and monitoring and evaluation (PIMME). For guidance to the assessment of the design, the LGU can use the generic checklist (Box 7a) or a relevant sector-specific checklist. For the PIMME, use Boxes 16 and 17 found in the “GAD Checklists for Project Implementation and Management, and Monitoring and Evaluation.” Depending on the HGDG score, the LGU may use the rating in Table 1 of the JMC 2013-01 to estimate the cost that may be attributed to the GAD budget.

Column 9: Office of Primary Responsibility (OPR)

This column specifies the unit or office within the LGU tasked to implement a particular GAD activity. The responsible unit shall have direct knowledge or involvement in GAD PPAs and shall periodically report on the progress of implementing its assigned tasks to the LGU’s LCE and/ or GFPS.

**ANNUAL GENDER AND DEVELOPMENT (GAD) PLAN AND BUDGET
FY _____**

Region: _____
 Province: _____
 City/Municipality: _____
 Total Budget of LGU: _____
 Total GAD Budget: _____

Gender Issue/ GAD Mandate (1)	Cause of the Gender Issue (2)	GAD Objective (3)	Relevant LGU PPA (4)	GAD Activity (5)	Performance Indicator (6)	Performance Target (7)	GAD Budget (8)			Office of Primary Responsibility (9)
							MOOE	PS	CO	
<u>Client-focused/GAD Mandate</u>										
<u>Organization- focused</u>										
SUB-TOTAL										
GRAND TOTAL (MOOE+CO+PS)										
Prepared by: Chairperson, GFPS-TWG			Approved by: Local Chief Executive				Date: DAY/MM/YEAR			

ANNEX E: GUIDE IN COMPLETING THE LGU GAD ACCOMPLISHMENT REPORT FORM

Note: The form at the end of this section guides the LGU in preparing its GAD Accomplishment Report.

Column 1: Gender Issue / GAD Mandate

This column lists down the gender issues and/or GAD mandates identified in the previous year's GAD Plan and Budget (GPB). The gender issues and GAD mandates and commitments that were not previously identified in the GPB but were addressed or implemented by the LGU shall also be reflected.

Column 2: Cause of the Gender Issue

This column lists down the causes or reasons for the identified gender issues in the previous year's GPB.

Column 3: GAD Objective

This column reflects the objectives that the LGU intended to achieve in relation to the GAD mandates and/or gender issues it committed to address in the previous year's GPB.

Column 4: Relevant LGU PPA

This column reflects the LGU PPAs relevant and appropriate to the gender issues and GAD mandate identified in Column 1 of the previous year's GPB.

Column 5: GAD Activity

This column enumerates the activities or interventions that were undertaken by the LGU in response to the identified gender issues, concerns and GAD mandates. GAD activities that are not included in the endorsed GPB but were implemented by the LGU shall also be reflected.

Column 6: Performance Indicator

This column indicates the indicators identified in the previous GPB which the LGU committed to achieve within the year. Columns 1-7 may just be copied from the previous year's GPB.

Column 7: Performance Target

This column indicates the targets identified in the previous GPB which the LGU committed to achieve within the year.

Column 8: Actual Results

This column reflects all the results/outputs of the GAD activities that were conducted and or implemented. It shall provide a description of the change that has occurred after implementing a particular GAD activity. The LGU must also indicate the accomplishment of previously identified targets.

Column 9: Total Approved GAD Budget

This column reflects the approved total GAD budget.

Column 10: Actual Cost or Expenditure

This column shows the actual cost or expenditure in implementing the identified GAD activities of the previous GPB. To avoid double counting and attribution, the LGU shall provide a breakdown of the expenditure, if necessary.

Column 11: Variance/Remarks

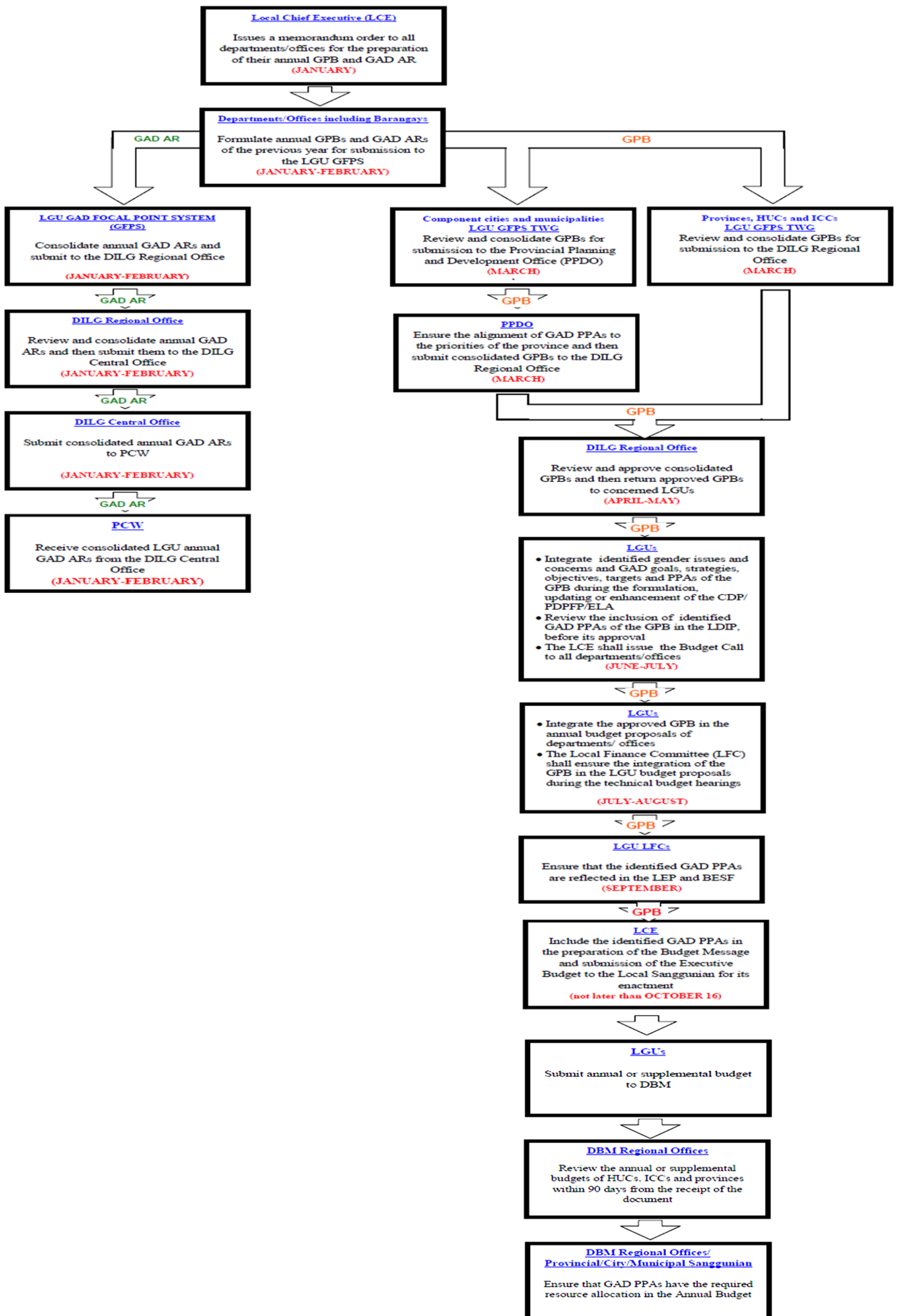
This column shall indicate any deviation from the identified results, activities and targets. The reasons for the deviation as well as the factors that have facilitated or hindered the implementation of the LGU-approved GPB shall also be cited.

ANNUAL GENDER AND DEVELOPMENT (GAD) ACCOMPLISHMENT REPORT
FY _____

Region: _____
Province: _____
City/Municipality: _____
Total Budget of LGU: _____

Gender Issue/ GAD Mandate	Cause of the Gender Issue	GAD Objective	Relevant LGU PPA	GAD Activity	Performance Indicator	Target	Actual Results	Total Approved GAD Budget	Actual Cost or Expenditure	Variance /Remarks
(1)	(2)	(3)	(4)	(5)	(6)	(7)	(8)	(9)	(10)	(11)
<u>Client- focused/GAD Mandate</u>										
<u>Organization- focused</u>										
TOTAL										
Prepared by: Chairperson, GFPS-TWG			Approved by: Local Chief Executive				Date: DAY/MM/YEAR			

ANNEX F: FLOWCHART OF THE GAD PLANNING AND BUDGETING SCHEDULE



ANNEX G: LGU STATUS REPORT ON INSTITUTIONAL MECHANISMS FOR GENDER MAINSTREAMING

This Annex guides the LGUs in monitoring the status of the institutional mechanisms for gender mainstreaming as provided for in the MCW and its IRR. It is accomplished on an annual basis and submitted to the DILG Regional Offices for consolidation in consonance with Sections 5.3 and 5.4 of this JMC.

Specific instructions for completing Annex G are provided as follows:

Column 1: Institutional Mechanisms

This column refers to the institutional mechanisms for gender mainstreaming required by MCW-IRR Section 37. Specifically, the mechanisms pertain to the following: a) development of and budgeting for GAD plans and programs; b) mainstreaming gender perspectives in local plans; c) formulation and implementation of the LGU GAD Code; d) creation, reconstitution and/or strengthening of the LGU GFPS; and e) the creation and/or maintenance of the LGU GAD Database.

The LGU may opt to develop or implement one or more institutional mechanisms within the year.

Column 2: Activities

This column indicates the activities that were undertaken to establish, strengthen or institutionalize a mechanism for gender mainstreaming. For example, activities related to the creation of the LGU GFPS such as *issuance of an executive order creating the GFPS* will be reflected in this column.

Column 3: Outputs

This column describes the result of implementing the activity. Continuing the example, the output would be that the Executive Order (with number and specific date) creating the LGU GFPS was issued.

Column 4: Status

For the first year of submission, this column will indicate the status of the specific institutional mechanism as of 2014. In succeeding years, the LGU shall reflect the status of said mechanism/s for the year.

Column 5: Implementation Cost

This column indicates the amount spent by the LGU to finance the activities in Column 2.

Column 6: Source of Funds

This column will reflect the budget source of the cost of implementing the activities in Column 2.

ANNEX G: LGU STATUS REPORT ON INSTITUTIONAL MECHANISMS FOR GENDER MAINSTREAMING
FY _____

Region _____
 Province of _____
 City/Municipality of _____

Institutional Mechanisms for Gender Mainstreaming (1)	Activities (2)	Outputs (3)	Status (4)	Implementation Cost (5)	Source of Funds (6)
Example: Creation of the LGU GFPS	Example: 1) Issuance of an executive order creating the GFPS 2) Conduct of Training on Gender Analysis	Example: Executive Order ___ dated ___ issued by the LCE within target period. Activity Design		XXXXXX XXXXXX	Example: General Fund General Fund
Prepared by: _____ Chairperson, TWG-GFPS	Approved by: _____ Local Chief Executive	Date: _____ DD/MM/YY			

ANNEX H. GAD EVALUATION REPORT

The GAD M&E Team, a sub-group from the LGU GFPS TWG created for the purpose shall make use of Annex H: GAD Evaluation Report in tracking the outcomes of gender-responsive and/or GAD-focused policies, programs and projects during the three-year term of the LGU leadership. During the M&E phase, the GAD M&E team will coordinate with the different LGU offices and committees including the Local Project Monitoring Committee, where existent. The team will also facilitate the participation of LGU stakeholders such as women and men constituents and program/project beneficiaries by consulting them and documenting their feedback, lessons learned and insights in the evaluation reports.

The results as reflected in Annexes E and F shall be used as references in coming up with end-of-term GAD Evaluation Report. Monitoring and evaluation for GAD shall also be guided by tools such as the Gender Mainstreaming Evaluation Framework (GMEF) and the HGDG, especially its GAD Checklists for Project Implementation and Management, Monitoring and Evaluation.

The GAD M&E Team shall accomplish Annex H at the end of the LGU leadership's term to serve as inputs to local policy-making and planning including GAD planning, programming, budgeting and implementation of the next local administration.

Specific instructions for completing Annex H are provided as follows:

Column 1: Policy/Program/Project

This column will indicate the gender-responsive and/or GAD-focused policies, programs and projects that the LGU has accomplished over the three-year term of the LGU leadership. The GFPS TWG Chair, who is a member of the GAD M&E Team, shall ensure that the policy/program/project title is reflected correctly in this column.

Column 2: Accomplishments (Outcome Level)

The GAD M&E Team shall indicate in this column the quantitative and qualitative accomplishments of the implementation of GAD policies, programs and projects over a three-year term, including their intended and unintended effects or benefits to their target beneficiaries. When reporting the results of GAD policies, programs and projects over the medium or long-term, the GAD M&E Team shall focus on the results of their interventions. LGUs are encouraged to adopt the results-based management approach for effective monitoring and reporting of results.

Column 3: Actual Cost of Implementation

The actual cost of GAD interventions or implementation of GAD policies, programs and projects over a three-year term of the LGU shall be reflected in this column.

Column 4: Recommendations

Based on the review and/or assessment of the information provided in Columns 1 to 3 of this Annex, the GAD M&E Team shall recommend the appropriate measures or interventions in response to the results of said assessment. The recommendations shall be used as inputs to local gender-responsive policy-making, planning, programming, implementation and M&E. To ensure sustainability, these recommendations shall be considered by the next leadership in the development of the LGU GPB, gender-responsive CLUP/CDP/PDPFP/ELA, updating of the GAD Code, among others.

Region _____
 Province _____
 City/Municipality _____

GAD EVALUATION REPORT
 End-of-Three-Year Term: _____

POLICY/PROGRAM/PROJECT (1)	ACCOMPLISHMENTS (OUTCOME LEVEL) (2)	ACTUAL COST OF IMPLEMENTATION (3)	RECOMMENDATIONS (4)
Prepared by: _____ Facilitator GAD M&E Team	Noted by: _____ Chairperson, TWG-GFPS		Date: _____ <u>DD/MM/YR</u>