



WELCOME TO THE  
ISLAMIC CITY OF MARAWI

اهلا وسهلا بكم في مدينة  
ماراوي الاسلامية

P A E, JUSTICE & DEVELOPMENT





WELCOME TO THE  
ISLAMIC CITY OF MARAWI

سَهْلًا كَمَ رُحْمَةً  
لَا وَفَ الْإِسْلَامَةَ

P.A.E. JUSTICE & DEVELOPMENT INC.

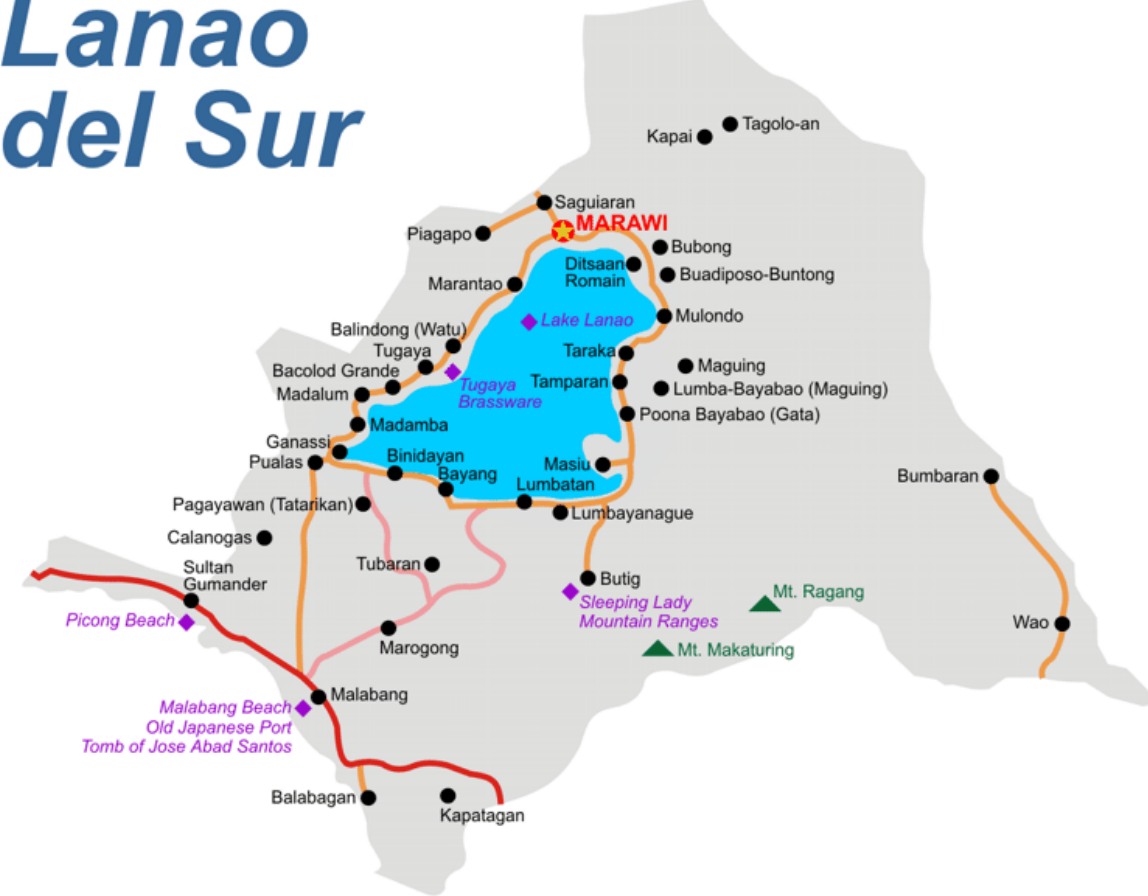
**MARAWI,**  
*We will rise again!*

**An Early Recovery to Rehabilitation**

# Profile:

- capital city
- 211,127 population, 1.52% annual growth rate
- 87.55 sq. km land area
- 96 barangays , 47 considered urban
- home to NPC - Agus 1 Hydro Electric Power Plant and the first of the six cascading Agus Hydro Power Plants.
- Economic hub of Lanao del Sur
- Seat of educational institutions including the main campus of MSU System
- economy is agriculture, trading
- called Meranaws

# Lanao del Sur

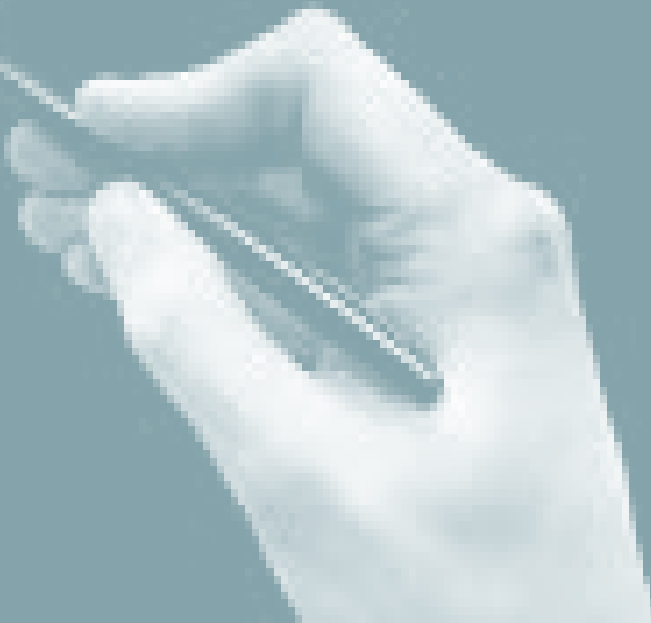








# of the Siege







**2008**

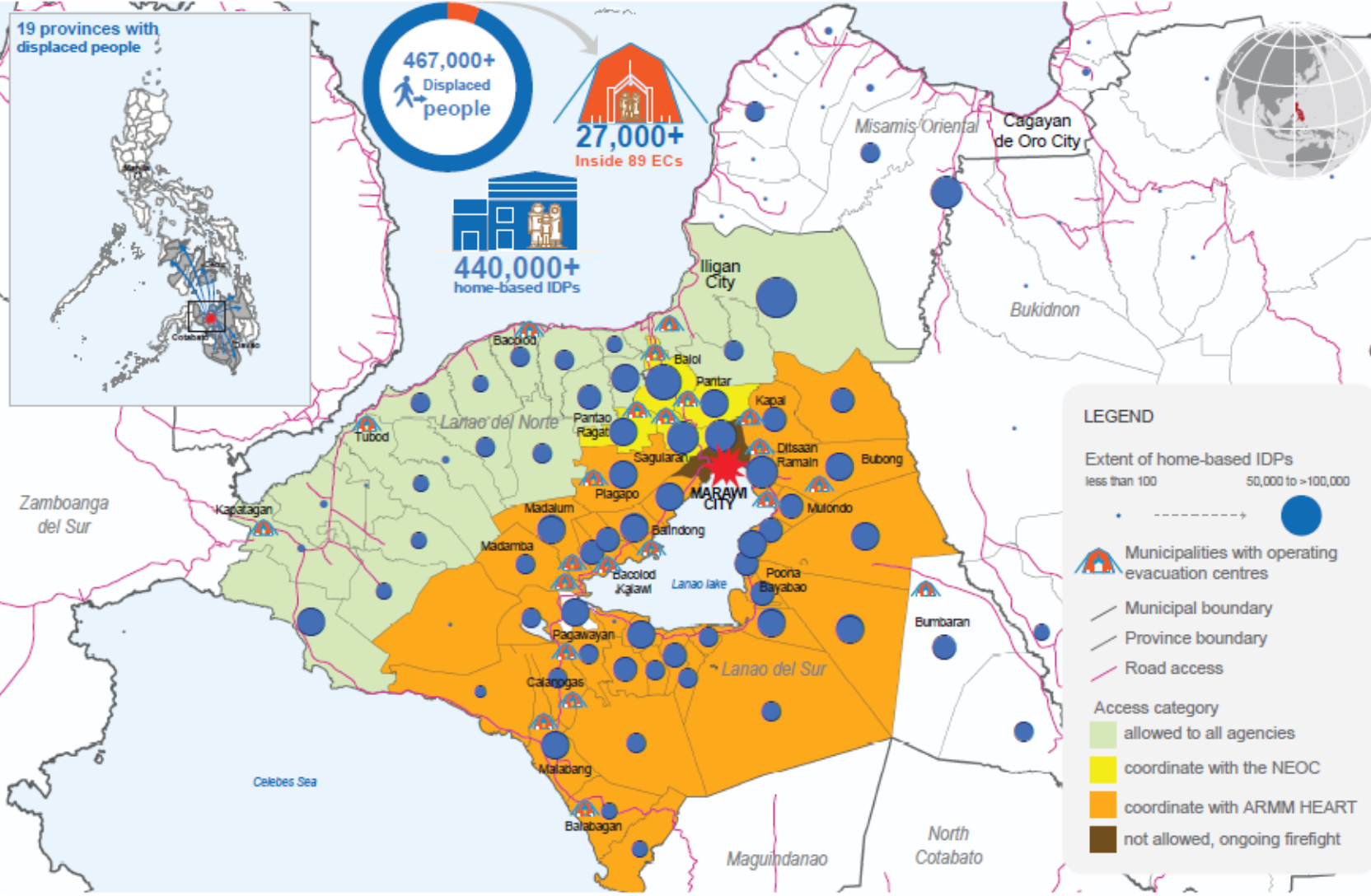
**2017**





# Impact: Massive DISPLACEMENT

Philippines: Displacement Snapshot - Marawi Armed Conflict (as of 20 July 2017)



The boundaries and names shown and the designations used on this map do not imply official endorsement or acceptance by the United Nations. Creation date: 20 July 2017. Sources: PSA (administrative boundaries), DSWD-DROMIC, OCHA, CFSI & UNHCR

Note: IDPs is increasing



# Impact: EDUCATION

- Approximately 86,772 school children are displaced and 1993 affected employees
- 243 destroyed school facilities

## SUMMARY OF AFFECTED EMPLOYEES

DIVISION/DISTRICT	
Marawi Cty	1,222
Ditsaan Ragain 1,2,3	212
Marantao 1,2	344
Saguiaran 1,2,3	215
<b>TOTAL</b>	<b>1,993</b>

## SUMMARY OF AFFECTED SCHOOLS

ELEMENTARY SCHOOLS												
Division	Municipality	Total Districts	School Category					Enrolment SY 2016-17				
			Public ES	Public PS	Total Public School	Total Private School	Total School	Public Elem	Public Primary	Total Public School	Total Private School	Total Enrolment
Marawi	Marawi City	9	48	13	61	47	108	29,123	2,005	31,128	12,423	43,551
LDS 1	Ditsaan-Ragain	3	12	4	16	0	16	4,760	596	5,356	0	5,356
LDS 1	Marantao	2	15	17	32	1	33	7,663	1,849	9,512	99	9,611
LDS 1	Saguiaran	3	13	16	29	2	31	4,643	1,447	6,090	216	6,306
<b>TOTAL</b>		<b>17</b>	<b>88</b>	<b>50</b>	<b>138</b>	<b>50</b>	<b>188</b>	<b>46,189</b>	<b>5,897</b>	<b>52,086</b>	<b>12,738</b>	<b>64,824</b>

SECONDARY SCHOOL														
Division	Municipality	Total Districts	Category					Enrolment SY 2016-17						Total Enrolment
			Public JHS Only	Public with SHS	Total Public School	Private School (JHS and SHS)	Total School	Public School			Private School			
								JHS (G7 to G10)	SHS	Total Public School	JHS (G7 to G10)	SHS	Total Private School	
Marawi	Marawi City	9	3	5	8	38	46	3,888	522	4,410	11,294	2,418	13,712	18,122
LDS 1	Ditsaan-Ragain	3	0	0	0	0	0	0	0	0	0	0	0	0
LDS 1	Marantao	2	3	1	4	1	5	1,929	150	2,079	0	0	0	2,079
LDS 1	Saguiaran	3	1	2	3	1	4	1,552	195	1,747	0	0	0	1,747
<b>TOTAL</b>		<b>17</b>	<b>7</b>	<b>8</b>	<b>15</b>	<b>40</b>	<b>55</b>	<b>7,369</b>	<b>867</b>	<b>8,236</b>	<b>11,294</b>	<b>2,418</b>	<b>13,712</b>	<b>21,948</b>



# Impact: INFRASTRUCTURES & PROPERTIES

- Estimated Cost of damages

*Socio infra, equipment and facilities – PhP 8Billion*

*Houses – est 1000 houses partially/totally damaged – PhP 4Billion*

*Economic Loss - PhP 4Billion*





# Impact: ECONOMIC

- Tremendous destructions to the peoples lives and livelihood
- Loss of Agricultural Crops and Fishing Materials
- Destroyed commercial bldgs., warehouses, rice mills and others
- Loss of capital







*of*  
**Marawi City**

# RECOVERY

EMERGENCY  
[2 Months]

EARLY RECOVERY  
[6 Months]

REHABILITATION  
[3 Years]







# Food Security Analysis:

## FACTS:

1. Poverty
2. Sources of Income: agriculture (vegetable), trading, transportation,
3. Source of its products: nearby municipalities and Iligan City

## IMPACT:

1. Loss of Agricultural produce (missed harvest season)
2. Potential loss of produce for next cropping season (high-risk)
3. Loss of Capital and Potential Gains

# RECOVERY

- ❑ Continuing Relief Assistance (in different modalities)
- ❑ Clearing operation
- ❑ Construction of a Transitional Shelter,
- ❑ Livelihood (skills development, agriculture, employment)
- ❑ Post Assessment



# RECOVERY to REHABILITATION

## □ INFRASTRUCTURE and LIFELINES

1. Procurement of heavy equipment for clearing and construction
2. Rehabilitation and construction of efficient water system
3. Rehabilitation of LASURECO for power generation; finding other alternative like solar system electrification
4. Rehabilitation & Construction of roads and bridges
5. Construction of a Marawi ring road which connects the Municipalities of Marantao, Saguiaran, and the Mun. of Raman to Saguiaran bypassing Marawi City.
6. Completion of the Marawi to Cagayan de Oro national road via Tagoloan, LDS and Talakag, Bukidnon
7. Establishment and construction of public transportation system including terminals
8. Construction of ecological public market
9. Enhancement of ESWM Pland & Establishment of the ESWM facilities including MRFs, etc.



# RECOVERY to REHABILITATION

## □ INFRASTRUCTURE and LIFELINES

1. Procurement of DRR equipment and facilities including response mobile cars
2. Construction of Headquarters for PNP
3. Construction of BFP with facilities
4. Construction of an integrated BJMP and facilities
5. Establishment of ecoparks



# RECOVERY to REHABILITATION

## □ SOCIAL SERVICES

1. Support to the construction of permanent shelters
2. Construction of relocation sites for no-built zones
3. Construction of Rural Health Unit and Brgy. Health Stations
4. Procurement of Health equipment and facilities
5. Construction of Day Care Centers
6. Construction and Establishment of a multi-purpose Crisis center
7. Construction and Repairs of Schools
8. Construction of Youth Centers
9. Enhancing regulation and support to madaris, toril and other similar institutions

# RECOVERY to REHABILITATION

## □ ECONOMIC

1. Integrated Farming Systems with demo farms, equipment and facilities
2. Establishments of a value-chain ensuring market linkage to production
3. Lake Lanao development
4. Ecological Farming System
5. Ports, Fish Landings and Ice Plants
6. Enhancing Tourism Opportunities & Services
7. Construction of Tourism Center and Display Centers
8. Support to private establishments/business sector



THANK YOU

*and Together,  
We will Rise Again!*