

Redevelopment of the City Cemetery: The Garden Of Life Park



MENT OF THE CITY CEMETERY



Based on 2005
City Civil Registry Dept. records
Mandaluyong City
has an average of
1,750 deaths/year.

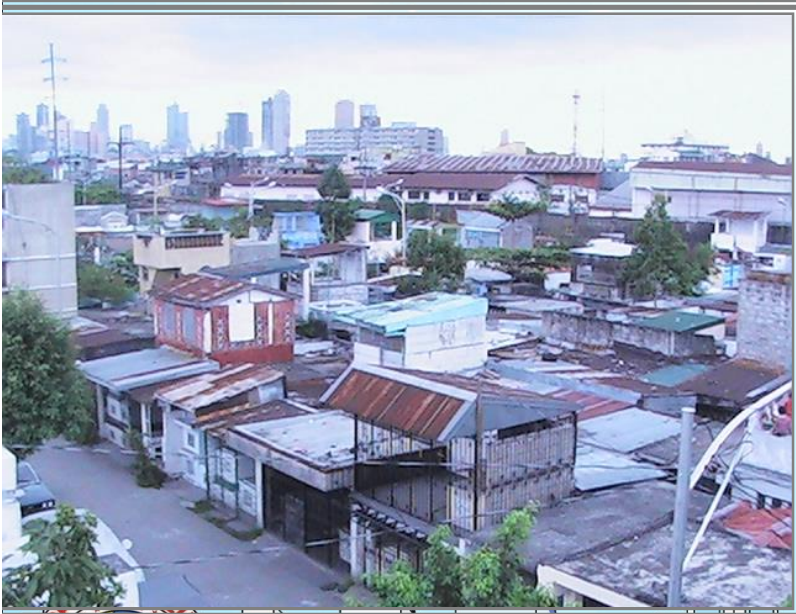
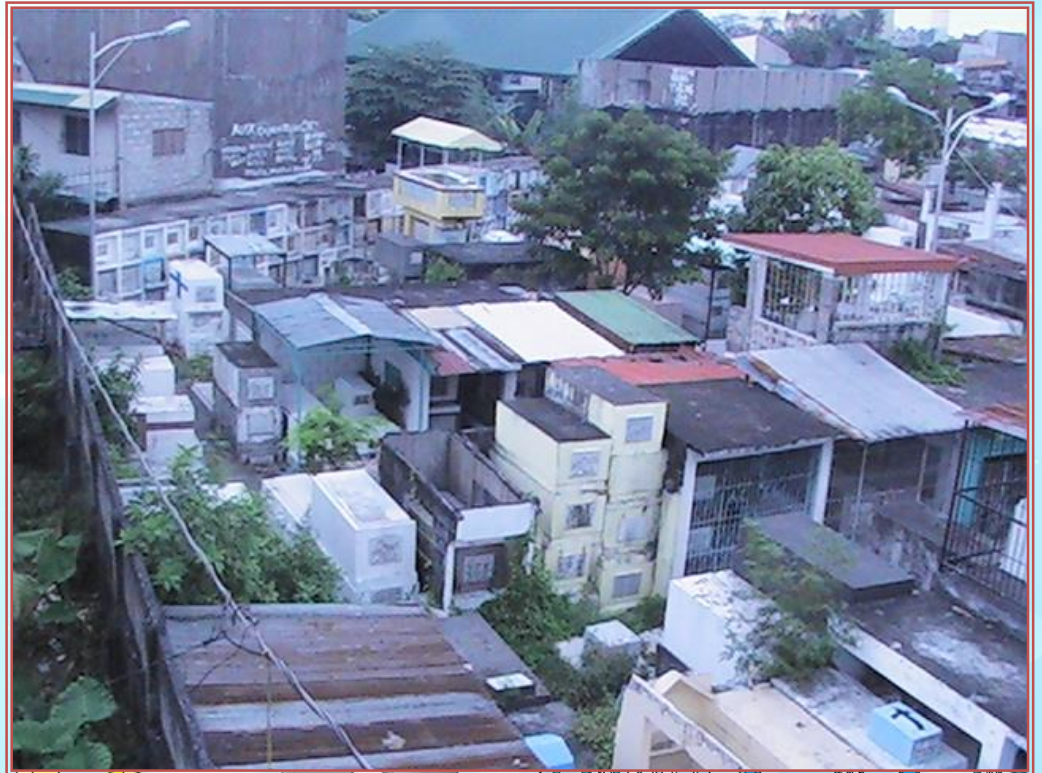
Out of this figure, an average of
913 families/year
availed of the City Cemetery services
representing **52.17%** of the total number of
deaths per year.

SERVICES	TOTAL
Apartment Niches	724
Exclusive Niches	143
Restus for Infants	46
OVER-ALL TOTAL	913





CONGESTED CITY CEMETERY





The cemetery was so congested that even walkways were used as interment sites



**APARTMENT
NICHE CAPACITY**

5,753

AVAILABLE NICHE

0







Exhumed Remains In Temporary Housing



OLD CHAPEL



CONCERNS

- Congestion due to space limitation
- Consistent number of burial
- Open space being converted/use for burial
- Health Hazard due to deteriorating condition
- Need to redevelop the cemetery through innovative approach to attain healthy environment and sustainability



MANDALUYONG

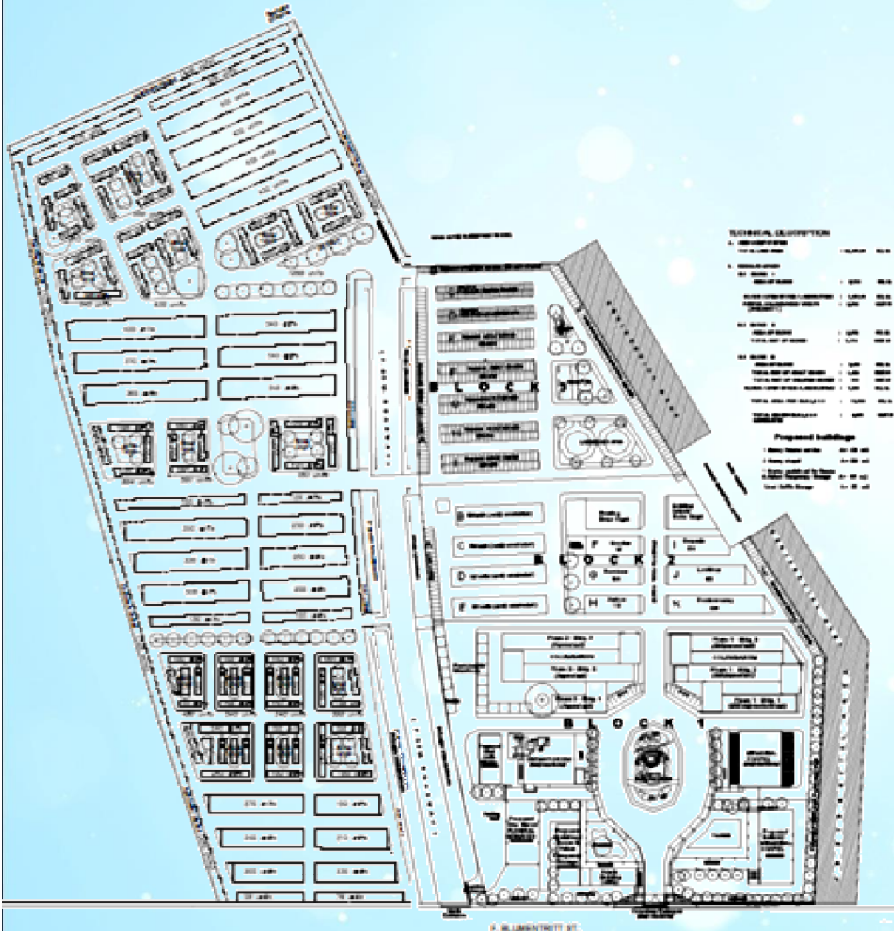
- Instruction by Hon. Mayor Benjamin C. Abalos, Jr. to conduct a study and subsequently prepare a Master Plan for the Redevelopment of the City Cemetery
- Sanggunian Resolution No. 1343, S-2008 (*adopted on January 28, 2008*)


A resolution authorizing the honorable City Mayor Benjamin C. Abalos, Jr. to address decongestion and safekeeping at the Mandaluyong city cemetery through cremation of bones taken out of niches which have remained unclaimed after the lapse of more than five years



ORDINANCE NO. 391, S-2008

THE MASTER PLAN FOR THE REDEVELOPMENT OF MANDALUYONG CITY CEMETERY AND APPROPRIATING FUNDS THEREFORE




 Republic of the Philippines
SANGGUNIANG PANLUNGSOD
 City of Mandaluyong

ORDINANCE NO. 391, S-2008
 AN ORDINANCE ADOPTING THE MASTER PLAN FOR THE REDEVELOPMENT OF THE MANDALUYONG CITY CEMETERY AND APPROPRIATING FUNDS THEREFORE

BE IT ORDAINED by the Sangguniang Panlungsod of Mandaluyong:

ARTICLE I
TITLE

This Ordinance shall be known as the "Master Plan for the Redevelopment of the Mandaluyong City Cemetery".

ARTICLE II
STATEMENT OF POLICIES AND PRINCIPLES

It shall be the policy of the City Government of Mandaluyong to endeavor to provide decent burial exclusive to the departed bonafide residents of Mandaluyong. Likewise, it shall also provide for sufficient space where living relatives of the departed can offer prayers and memorial services to the departed.

ARTICLE III
SCOPE AND COVERAGE

The Mandaluyong City Cemetery located along F. Blumentritt St., Barangay Vergara, and covering an approximate land area of 2.57 hectares is hereby declared for redevelopment based on the Master Plan attached herein as Annex A.

Only facilities, structures and infrastructure intended for administration office, prayer, cremation, burial and related uses shall be allowed within the Cemetery area.

ARTICLE IV
DEFINITION OF TERMS

The Master Plan shall have the following elements as herein defined:

- ALLEY** – a narrow passageway or lane, especially one running between or behind buildings or structures in the cemetery.
- APARTMENT NICHES** – a block of multi-level flats, with series of hallowed-out cubicles with narrow openings to hold the dead.
- BLOCK** – a group of niches, bone crypts where human remains are contained and other burial facilities in a cemetery bounded on all sides by a road, aisle or alley.
- BONE CRYPT** – a multi-level flat, arranged in a block to form a series of small recess vaults used for storing human bones.

CERTIFIED TRUE COPY
 by CHONA E. PELESTE
 CLERK III
 SANGGUNIANG PANLUNGSOD
 CITY OF MANDALUYONG

3/14/08
 CHONA E. PELESTE
 CLERK III
 SANGGUNIANG PANLUNGSOD
 CITY OF MANDALUYONG

VII
 RATION
 G GROUP. A technical working group to be appointed by the Honorable Mayor functions:

for securing permits and clearances in 19 (Clean Air Act), Republic Act No. 9275 agencies and such other requirements from the Department of Environment and

guidelines in the management of the burial and cremation services, visitation days and All Souls Day;

in tool and act as the monitoring group for report to the City Council or concerned

appropriate fees for burial and cremation

be deemed necessary for the efficient management of the Mandaluyong City

VIII
 ITY

ately after its publication at least once in

08 in the City of Mandaluyong.

REBY CERTIFY THAT THE FOREGOING ORDINANCE ENACTED AND APPROVED BY THE SANGGUNIANG PANLUNGSOD OF MANDALUYONG IN REGULAR SESSION ON THE DATE AND PLACE FIRST ABOVE GIVEN

JIMMY D. LACEBAL
 Sangguniang Secretary

ROVED:
 BENJAMIN DC. ABALOS, JR.
 City Mayor
 Date: APR 04 2008





THE NEW GARDEN OF LIFE PARK

STATE OF THE ART FACILITIES

AMIDST LANDSCAPED ENVIRONS



THE NEW
GARDEN OF LIFE PARK



SPACIOUS WALKWAYS

CITY CHAPEL MADE FOR COMFORT

as P1,000 per day (3 days free use of funeral services are availed of)



NEW CHAPEL

NEW APARTMENT NICHES



5-year lease at ₱ 3,500

₱ 4,000 – 5,000

INDIGENTS

OTHER RESIDENTS

ENVIRONMENT FRIENDLY CREMATORIUM



	BONES (Php)	FRESH (Php)
INDIGENTS	2,000	3,500
RESIDENTS	4,000 - 6,000	7,000 – 10,000
NON-RESIDENTS	7,000	12,000

CREMATORIUM



Portacoelli Cremator



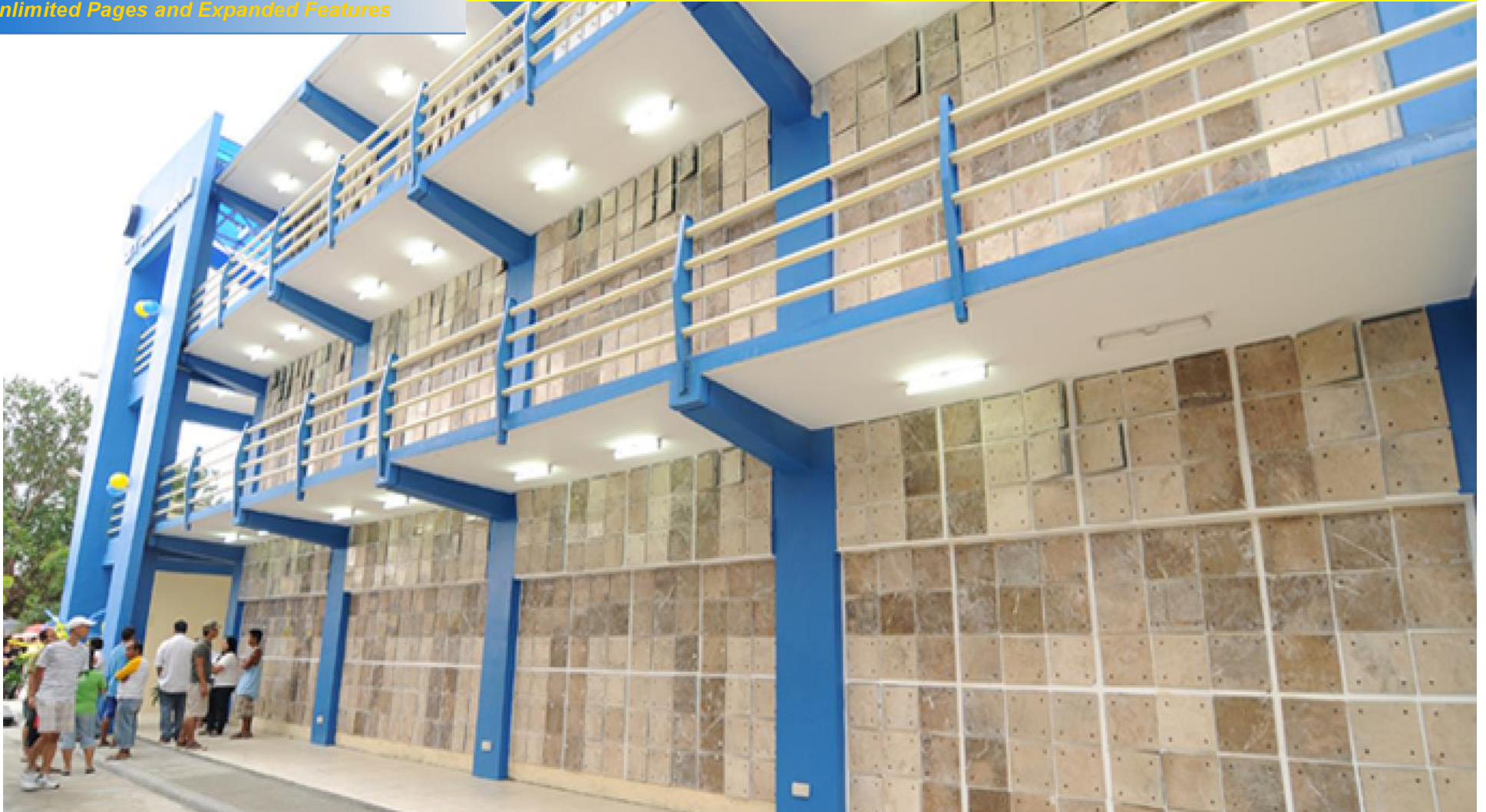
Remains Processor





NEW FUNERAL SERVICE BUILDING

COLUMBARIUM



LUXURIOUS COLUMBARIUM WITH 2,592 UNITS

(OR AN EQUIVALENT OF ONLY 300 REGULAR 4-LEVEL APARTMENT NICHES)

NEW COLUMBARIUM

STYLISH UNITS
4 urns capacity per unit

As low as ₱1,000 – ₱2,000 per year

INDIGENTS	1,000
EYE LEVEL (4,5,6)	2,000
OTHER LEVELS	1,250 – 1,500





NEW FUNERAL SERVICE BUILDING

CIAL IMPACT

A CHILD – FRIENDLY ENVIRONMENT





*Your complimentary
use period has ended.
Thank you for using
PDF Complete.*

[Click Here to upgrade to
Unlimited Pages and Expanded Features](#)

CIAL IMPACT



CIAL IMPACT





₱42,324,884.09 income generated from
the Garden of Life Park



Galing Pook Winner GARDEN OF LIFE PARK



*Your complimentary
use period has ended.
Thank you for using
PDF Complete.*

[Click Here to upgrade to
Unlimited Pages and Expanded Features](#)

THANK YOU!

