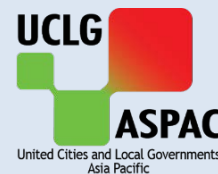


Philippine Local Government Initiatives and Good Practices on Land Governance

The Legazpi City Experience



Legazpi City Profile



- Geographical center of Bicol Peninsula
- 532 kms. South of Metro Manila
- Population (2015 Census): 196,639
- Pop. Growth Rate : 1.46
- Number of Households : 41,698
- Area (in sq.km.) : 204.371
- Total No. of Barangays : 70
- Major Industries: Wholesale & Retail Trade, Hotels & Restaurants , Agriculture
- The City of Fun & Adventure
- The Provincial Capital of Albay
- The Regional Administrative Center
- The Hub of commerce, trade and industry, education and health in the region

Legazpi City Vision

One of the Top 5 Convention Destinations in Luzon

- Inclusive growth & sustainable growth
- Effective & Efficient services
- Active participation & engagement of all stakeholders
- Safe Environment

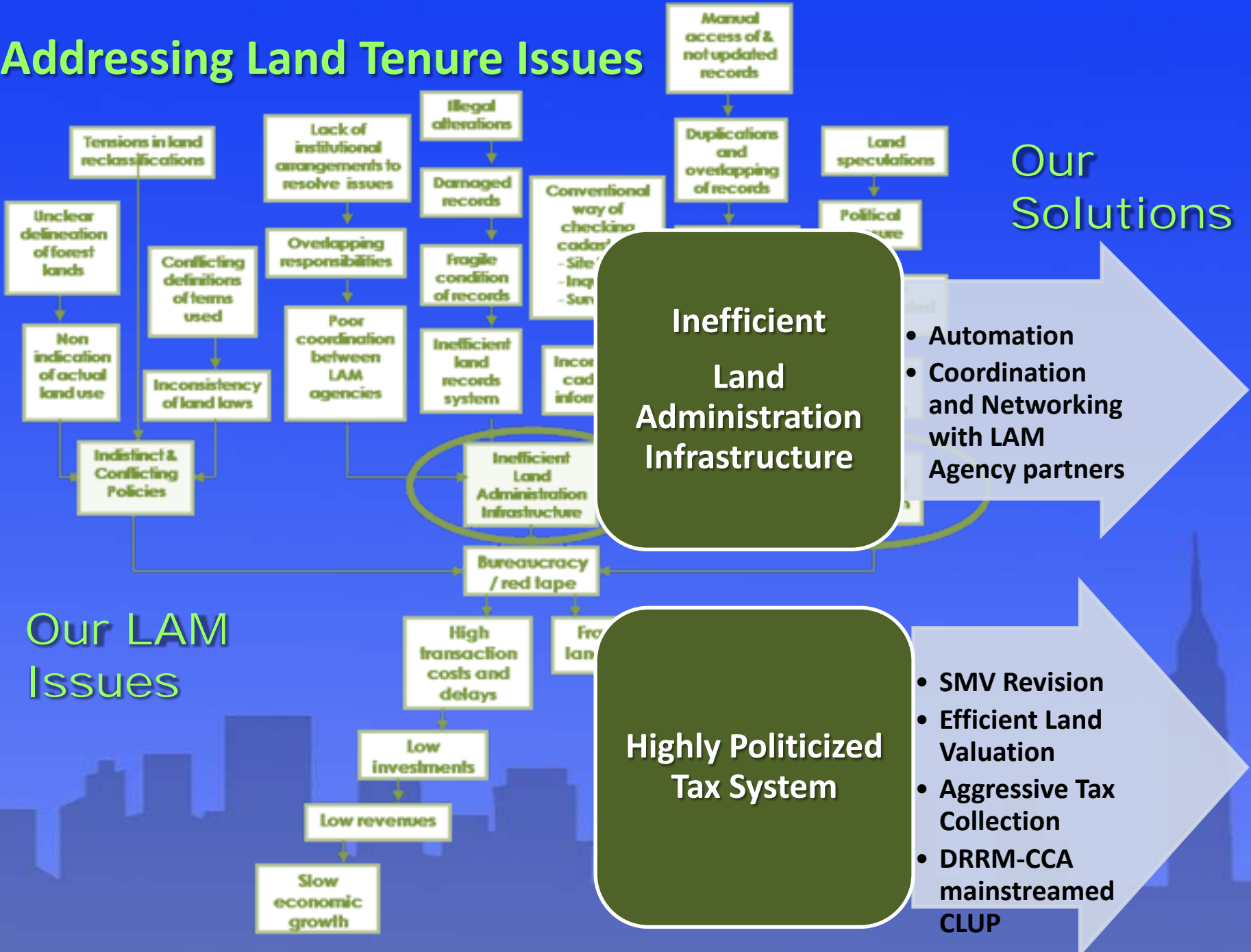
Guiding Principles

- A climate-adaptive and disaster-resilient Legazpi
- Multi-stakeholder participation, partnerships and engagement
- Inclusive growth

LGU Development Priorities

- Growth towards the Near South and Southeastern part of the City
- Promotion of mixed uses and infilling or densification in the Urban Core and Convergence Points
- Waterfront development

Addressing Land Tenure Issues



Problem Tree Analysis: LAM Issues and Concerns

Modular Approach

Thru LAMP2 and REGALA Projects

MODULAR STRATEGY

CREATION OF LAM STEERING COMMITTEE

IT-BASED TAX ADMINISTRATION SYSTEM (ETRACS)

BENEFITS TO LGU

Coordination and networking among LAM national agencies and the LGU

- Increased tax collection
- Streamlined LGU operations & processes
- Developed IT capabilities of the employees

BENEFITS TO THE CITIZENRY

Coordinated, relevant and improved LAM services

Time savings for taxpayers
Transparency in tax assessment and collection

Modular Approach

Thru LAMP2 and REGALA Projects

MODULAR STRATEGY

DIGITAL CADASTRAL DATABASE DEV. FOR LEGAZPI CITY
(in partnership with DENR V-LMS)

GEOGRAPHIC INFORMATION SYSTEM (GIS)

BENEFITS TO LGU

Credible and more accurate cadastral index map produced by DENR as base map of the LGU for GIS development

GIS-produced maps for land use planning, tax mapping, climate & disaster risk assessment and service delivery

BENEFITS TO THE CITIZENRY

Easy access to accurate land information

Easy to understand land information thru visuals (maps & thematic layers) for informed decision making

Modular Approach

Thru LAMP2 and REGALA Projects

MODULAR STRATEGY

LAND VALUATION

LAND USE PLANNING
& INVESTMENT

BENEFITS TO LGU

Updated land market values using internationally accepted standards & processes approved by the BLGF

- Provided continuity across time and justification for decisions
- Land use planning with DRR & CCA mainstreamed

BENEFITS TO THE CITIZENRY

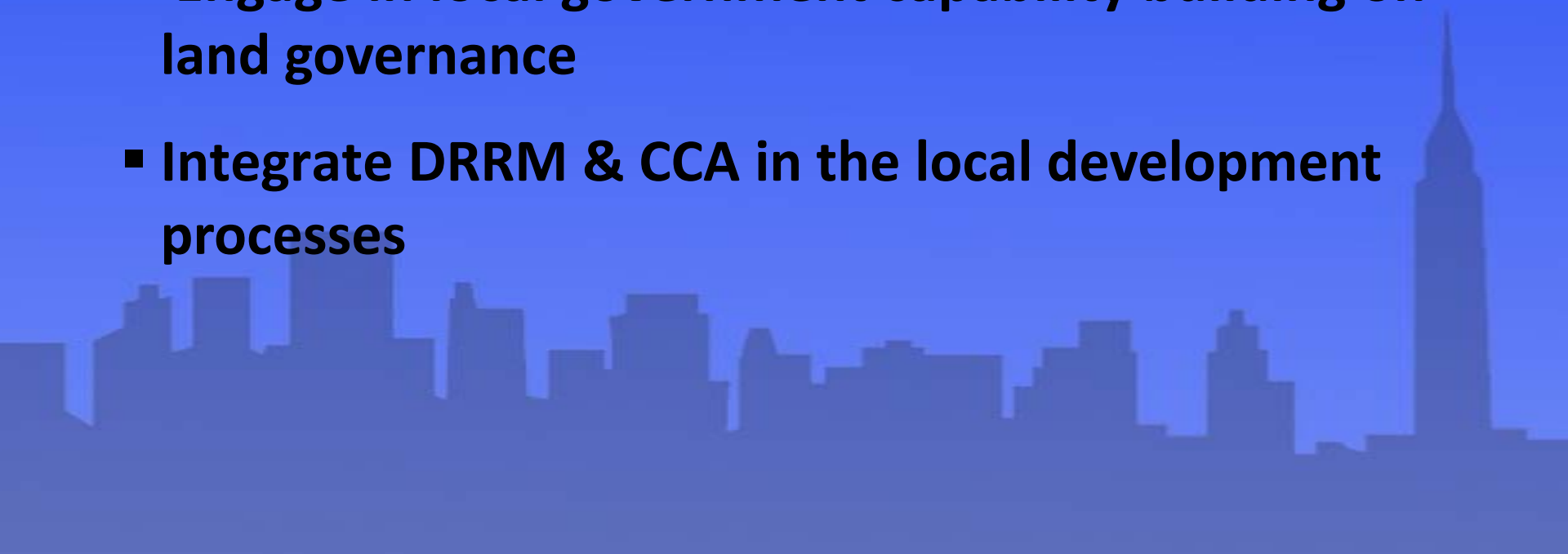
Equitable land valuation
A just and fair way of paying for public services

Private participation to balance compelling interests and protect valued resources and public investments

HOW WE DID IT

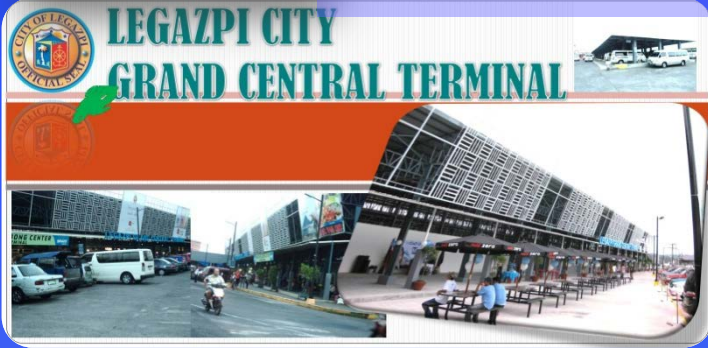


RECOMMENDATIONS

- **Share working models in land governance**
 - **Improve inter-agency coordination**
 - **Engage in local government capability building on land governance**
 - **Integrate DRRM & CCA in the local development processes**
- 



A partnership that transforms



The FRUITS

Gawad Kalasag Hall of Fame 2015



Seal of Good Local Governance 2016



Top 2 Liveable Cities Design Challenge



BOATr Program 2016



CLAD Award for Excellence 2016



eGov Awards G2C Champion 2016 & G2B Runner-up



SM City Legazpi

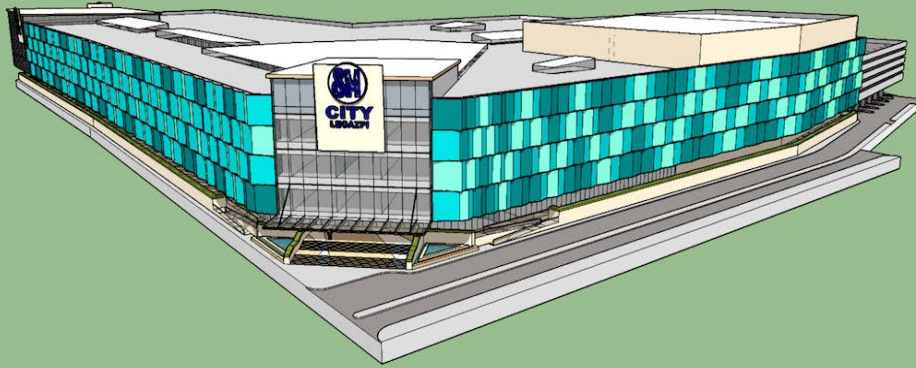


PHOTO EDITED BY: LEGAZPI CITY URBANISM FB PAGE



Gregorian Mall



LEGAZPI CITY GRAND CENTRAL TERMINAL



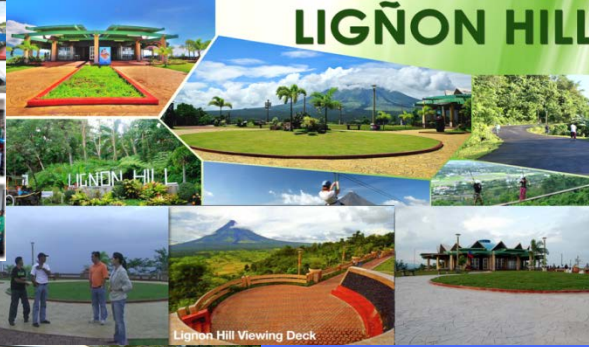
The Oriental Legazpi



SOLID WASTE MANAGEMENT (No segregation no collection policy)



LIGNON HILL



Emerald Boutique Hotel



LEGAZPI CITY ABATTOIR

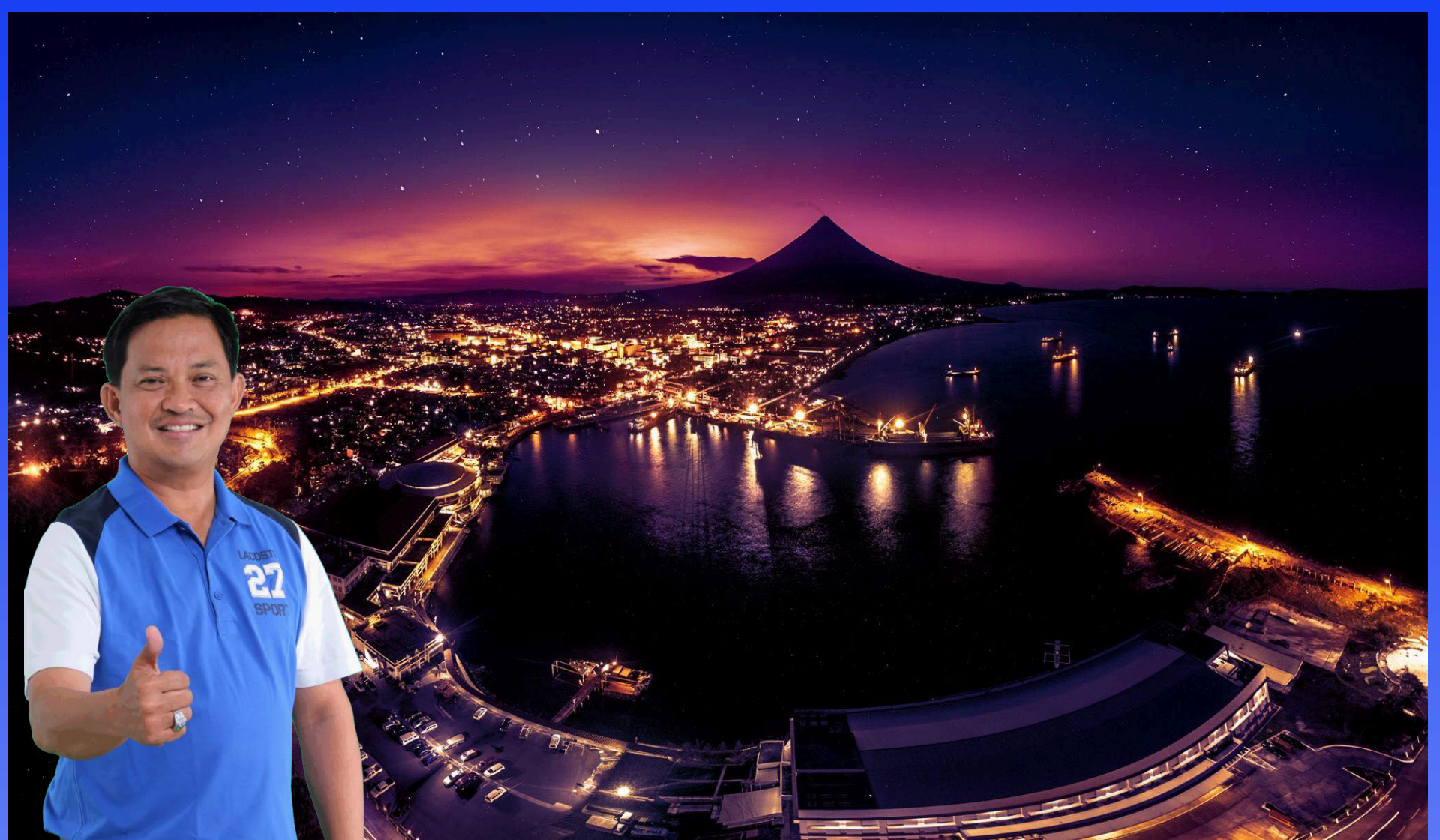


Legazpi City Hospital



Lotus Blue Hotel





www.legazpi.gov.ph

